

College of Business Administration University of Louisiana—Monroe



PRODUCED BY THE ULM COLLEGE OF BUSINESS ADMINISTRATION
CENTER FOR BUSINESS AND ECONOMIC RESEARCH

Business and Economic Climate of Monroe, Louisiana and the Surrounding Area: 2007

The Economy and Demography of Northeast Louisiana

Northeast Louisiana is a 12-parish area bordered to the north by Arkansas and to the east by Mississippi. The twelve parishes of Northeast Louisiana, for the purposes of this publication, are Caldwell, East Carroll, Franklin, Jackson, Lincoln*, Madison, Morehouse, Ouachita, Richland, Tensas, Union, and West Carroll. The Monroe metropolitan statistical area (Ouachita and Union Parishes: MSA rank by population=209/280) is the population and business center for the greater area.

The data contained herein is compiled from many sources and is as current as availability permits.

* The State of Louisiana does not typically include Lincoln Parish in the Northeast Louisiana statistical area.



University of Louisiana Monroe Library on Bayou DeSiard

INSIDE the 2007 Factbook:

Population and Demographic Data.....	pp. 3-8
Labor Force Statistics.....	pp. 9-16
Business Climate Data.....	pp. 17-21
Quality of Life Information.....	pp. 22-28

Material in this publication was researched and compiled by Robert C. Eisenstadt, PhD, of the Economics Department, Center for Business and Economic Research, College of Business Administration, at the University of Louisiana Monroe. All information presented here is the responsibility of the author and not that of the University of Louisiana Monroe or its affiliates.

Questions or comments may be referred to:

**Robert Eisenstadt, PhD
Center for Business and Economic Research
College of Business Administration, ULM**

**318.342.1151 (voice)
318.342.3096 (fax)**

eisenstadt@ulm.edu

Please check on-line for updates and/or supplements.

cba.ulm.edu/cba/factbook

Population and Demographic Data

Annual Population and Population Percent Change, 2002-2006

	2002	2003	2004	2005	2006	% Change 2002- 2006	% Change 2005- 2006
Louisiana	4,475,003	4,490,380	4,506,685	4,523,628	4,287,768	-4.18%	-5.21%
Northeast LA	350,607	350,985	350,557	348,983	349,422	-0.34%	0.13%
Monroe MSA*	169,883	170,595	171,089	171,138	171,987	1.24%	0.50%
Monroe City	52,178	52,023	52,145	51,914	53,952	3.40%	3.93%
Caldwell Parish	10,595	10,604	10,689	10,563	10,593	-0.02%	0.28%
East Carroll Parish	9,097	9,010	8,870	8,756	8,651	-4.90%	-1.20%
Franklin Parish	20,901	20,876	20,690	20,380	19,962	-4.49%	-2.05%
Jackson Parish	15,266	15,293	15,262	15,135	15,036	-1.51%	-0.65%
Lincoln Parish	41,858	42,108	42,285	42,108	42,647	1.88%	1.28%
Madison Parish	13,194	12,908	12,658	12,457	12,914	-2.12%	3.67%
Morehouse Parish	30,514	30,592	30,383	29,989	29,715	-2.62%	-0.91%
Ouachita Parish	147,073	147,691	148,238	148,237	149,788	1.85%	1.05%
Richland Parish	20,714	20,565	20,535	20,526	20,371	-1.66%	-0.76%
Tensas Parish	6,419	6,274	6,157	6,125	6,018	-6.25%	-1.75%
Union Parish	22,810	22,904	22,851	22,901	22,199	-2.68%	-3.07%
West Carroll Parish	12,166	12,160	11,939	11,806	11,528	-5.24%	-2.35%

*Monroe MSA includes Ouachita & Union Parishes.

Population figures are July estimates.

Source: U.S. Census Bureau

2005 Population by Age Bracket by Parish

	age 0-19	age 20-34	age 35-49	age 50-64	age 65+	total	Median age*
Caldwell	2,623	2,390	2,196	1,850	1,504	10,563	37.0
East Carroll	2,758	1,996	1,676	1,259	1,067	8,756	31.1
Franklin	5,770	3,800	4,122	3,478	3,210	20,380	37.4
Jackson	3,941	2,913	3,021	2,819	2,441	15,135	39.1
Lincoln	12,276	12,589	6,657	5,705	4,881	42,108	26.7
Madison	3,930	2,669	2,358	2,081	1,419	12,457	32.5
Morehouse	8,474	5,790	6,101	5,167	4,457	29,989	36.9
Ouachita	44,043	32,994	29,807	23,539	17,854	148,237	33.5
Richland	5,742	4,185	4,244	3,384	2,971	20,526	36.4
Tensas	1,678	1,199	1,217	1,171	860	6,125	37.7
Union	6,067	4,454	4,652	4,203	3,525	22,901	38.2
West Carroll	3,040	2,432	2,412	2,070	1,852	11,806	38.3
NE Louisiana	100,342	77,411	68,463	56,726	46,041	348,983	34.2
% of NE	28.8%	22.2%	19.6%	16.3%	13.2%	100.0%	

*2005 median age for Louisiana=35.4; for United States=36.4

Population and Demographic Data (continued)

Percent of Total Population by Race and Gender, by Parish (2005)

	Female	Hispanic (not Black)	Black	Black Female
Caldwell Parish	49.1%	1.5%	17.7%	8.0%
East Carroll Parish	48.8%	0.8%	68.2%	33.6%
Franklin Parish	52.2%	0.6%	31.3%	16.7%
Jackson Parish	52.1%	0.8%	27.1%	14.9%
Lincoln Parish	51.1%	1.4%	39.9%	21.4%
Madison Parish	50.5%	1.4%	61.5%	31.6%
Morehouse Parish	52.0%	0.5%	44.6%	23.9%
Ouachita Parish	52.4%	1.2%	34.8%	18.8%
Richland Parish	53.0%	1.1%	37.5%	20.2%
Tensas Parish	50.1%	1.6%	56.7%	28.8%
Union Parish	51.0%	2.6%	27.0%	14.2%
West Carroll Parish	49.1%	1.3%	18.7%	8.0%
NE Louisiana	51.0%	1.2%	38.7%	20.0%

Louisiana experienced considerable shifts in population following Hurricanes Katrina and Rita (August-September 2005). The State's official population estimate for 2006 (July) shows a loss in excess of 235,000 people (-5.2%) when measured against the 2005 estimate.

Northeast Louisiana experienced some spotty positive changes in population from intra-state shifts. The regional change arrested the secular declines in population that had been ongoing since 2000. The 12-parish region overall posted a small gain (approximately 0.13%). Positive population changes were pronounced (and only) in those parishes with relatively developed metropolitan areas and, hence, employment opportunities and social services. Ouachita Parish and Lincoln Parish saw the greatest share of the gains. The gains in these two parishes along with growth in Madison Parish were sufficient for the region to overcome the small and cumulative negative changes posted by the other parishes.

Educational Attainment by Parish, as Percent of Population over Age 25 (2000)

	Less than High School	High School (includes GED)	Some College - no Degree	Associate's Degree	Bachelor's Degree	Graduate or Professional Degree	Population 25+ years (in year 2000)
Caldwell Parish	34.6	38.6	16.5	1.5	5.6	3.2	6,922
East Carroll Parish	42.2	31.2	12.4	1.9	7.2	5.1	5,542
Franklin Parish	38.6	36.5	13.9	1.2	6.2	3.6	13,423
Jackson Parish	26.4	39.7	18.5	2.5	8.1	4.8	10,062
Lincoln Parish	19.6	24.7	20.5	3.4	16.5	15.3	22,059
Madison Parish	36.6	33.7	16.5	2.2	7.7	3.3	7,670
Morehouse Parish	33.4	38.8	15.8	2.3	6.7	3	19,446
Ouachita Parish in 2000	21.4	30	23.1	2.8	14.8	7.9	88,430
Ouachita Parish in 2005*	19.0	31.9	21	4.3	15.4	8.4	89,785
Richland Parish	38.1	32.1	14.8	2.1	8.8	4.1	13,060
Tensas Parish	36.9	31.5	15.4	1.4	10.1	4.7	4,208
Union Parish	28.3	40.1	17.6	2.2	8.1	3.7	14,819
West Carroll Parish	40.4	34.8	13.7	1.6	6.3	3.2	7,994
NE Louisiana 2000	27.7%	32.6%	19.3%	2.5%	11.4%	6.6%	213,635
Louisiana 2000	25.2%	32.4%	20.2%	3.5%	12.2%	6.5%	2,775,468
Louisiana 2005*	19.5%	35.0%	20.3%	4.6%	13.4%	7.1%	2,791,859

Sources: US Census Bureau Profile of Selected Characteristics 2000; * US Census Bureau, American Community Survey 2005 (pop.>65,000)

Migration and Natural Increase: 2000 to 2006

	Total Population Change*	Natural Increase			Net Migration		
		Total	Births	Deaths	Total Migration	Net International Migration	Net Internal Migration
Louisiana	(181,190)	145,355	410,364	265,009	(308,248)	22,244	(330,492)
Caldwell Parish	55	105	859	754	(12)	-	(12)
East Carroll Parish	(722)	329	974	645	(1,029)	9	(1,038)
Franklin Parish	(808)	236	1,943	1,707	(988)	23	(1,011)
Jackson Parish	(195)	(37)	1,252	1,289	(107)	-	(107)
Lincoln Parish	(652)	1,248	3,409	2,161	(1,775)	348	(2,123)
Madison Parish	(1,400)	312	1,300	988	(1,694)	30	(1,724)
Morehouse Parish	(1,260)	381	2,736	2,355	(1,548)	2	(1,550)
Ouachita Parish	2,009	6,053	14,415	8,362	(3,579)	289	(3,868)
Richland Parish	(427)	310	1,881	1,571	(682)	12	(694)
Tensas Parish	(480)	96	549	453	(556)	28	(584)
Union Parish	161	490	2,012	1,522	(255)	104	(359)
West Carroll Parish	(582)	(34)	897	931	(506)	4	(510)

Source: Population Division, U.S. Census Bureau

* Release Date: March 22, 2007

Number of Housing Units by Year, by Parish

	Housing units 2001	Housing units 2002	Housing units 2003	Housing units 2004	Housing units 2005
Caldwell Parish	5,070	5,087	5,104	5,113	5,140
East Carroll Parish	3,241	3,250	3,256	3,264	3,267
Franklin Parish	8,679	8,719	8,770	8,814	8,845
Jackson Parish	7,403	7,440	7,470	7,503	7,522
Lincoln Parish	17,228	17,346	17,481	17,660	18,033
Madison Parish	5,014	5,022	5,031	5,033	5,037
Morehouse Parish	12,845	12,909	12,971	13,051	13,076
Ouachita Parish	60,633	61,076	61,492	61,958	62,317
Richland Parish	8,399	8,439	8,476	8,536	8,604
Tensas Parish	3,371	3,380	3,388	3,415	3,446
Union Parish	11,001	11,077	11,210	11,337	11,597
West Carroll Parish	5,035	5,066	5,089	5,114	5,129
NE Louisiana	147,919	148,811	149,738	150,798	152,013

Population and Demographic Data (continued)

Total Personal Income (thousands of current dollars)							
	2001	2002	2003	2004	2005	% growth 2001-04	% growth 2004-05
Louisiana	110,256,197	112,743,677	115,694,842	121,780,899	111,167,116	10.5%	(8.7%)
NE Louisiana	7,539,519	7,677,584	7,964,097	8,206,299	8,507,700	8.8%	3.7%
Caldwell	196,100	197,779	203,275	215,657	223,510	10.0%	3.6%
East Carroll	149,654	138,915	164,267	162,310	163,955	8.5%	1.0%
Franklin	376,366	374,005	407,571	406,215	421,892	7.9%	3.9%
Jackson	354,781	361,817	365,221	370,972	386,061	4.6%	4.1%
Lincoln	897,506	903,577	904,639	983,219	1,011,047	9.6%	2.8%
Madison	214,733	209,795	238,043	223,691	234,742	4.2%	4.9%
Morehouse	587,122	583,852	635,820	630,541	650,345	7.4%	3.1%
Ouachita	3,559,813	3,710,791	3,794,746	3,903,988	4,047,130	9.7%	3.7%
Richland	390,977	380,861	406,099	423,432	439,242	8.3%	3.7%
Tensas	112,102	106,251	130,828	125,993	134,495	12.4%	6.7%
Union	482,166	495,804	491,989	546,072	561,846	13.3%	2.9%
West Carroll	218,199	214,137	221,599	214,209	233,435	(1.8%)	9.0%

Source: Regional Economic Information System, Bureau of Economic Analysis, U.S. Department of Commerce

Per Capita Personal Income (current dollars)							
	2001	2002	2003	2004	2005	% growth 2001-04	% growth 2004-05
Louisiana	24,702	25,219	25,819	27,088	24,664	9.7%	(8.9%)
NE Louisiana	21,635	22,031	22,854	23,549	24,414	8.8%	3.7%
Caldwell	18,591	18,646	19,157	20,129	21,050	8.3%	4.6%
East Carroll	16,244	15,307	18,307	18,363	18,661	13.0%	1.6%
Franklin	17,890	17,921	19,574	19,678	20,691	10.0%	5.1%
Jackson	23,075	23,730	23,936	24,388	25,594	5.7%	4.9%
Lincoln	21,366	21,614	21,536	23,347	24,126	9.3%	3.3%
Madison	15,995	15,936	18,510	17,715	18,823	10.8%	6.3%
Morehouse	19,149	19,165	20,843	20,812	21,737	8.7%	4.4%
Ouachita	24,330	25,262	25,758	26,400	27,397	8.5%	3.8%
Richland	18,721	18,412	19,797	20,705	21,541	10.6%	4.0%
Tensas	17,284	16,584	20,926	20,497	21,987	18.6%	7.3%
Union	21,073	21,759	21,526	23,937	24,571	13.6%	2.6%
West Carroll	18,014	17,616	18,255	17,996	19,758	(0.1%)	9.8%
United States	30,562	30,795	31,466	33,090	34,471	8.3%	4.2%

Source: Regional Economic Information System, Bureau of Economic Analysis, U.S. Department of Commerce

	Wage and Salary Disbursements as Percent of Area Personal Income					Area Per Capita Personal Income as % of U.S. Per Capita Personal Income	
	2001	2002	2003	2004	2005	2004	2005
Louisiana	52.7%	52.8%	53.0%	52.5%	59.6%	82.0%	72.0%
NE Louisiana	46.7%	47.3%	45.6%	45.1%	45.1%	71.2%	70.8%
Caldwell	28.1%	29.4%	29.4%	28.6%	29.2%	61.0%	61.0%
East Carroll	35.4%	38.4%	33.3%	35.2%	35.3%	55.0%	54.0%
Franklin	32.5%	32.8%	29.7%	31.2%	30.9%	59.0%	60.0%
Jackson	31.4%	31.6%	32.0%	30.5%	30.1%	74.0%	74.0%
Lincoln	54.2%	53.2%	53.2%	50.9%	50.5%	71.0%	70.0%
Madison	41.7%	45.5%	39.5%	40.9%	38.8%	54.0%	55.0%
Morehouse	39.3%	40.4%	38.6%	37.3%	35.7%	63.0%	63.0%
Ouachita	56.2%	56.4%	54.9%	54.5%	54.7%	80.0%	79.0%
Richland	34.7%	35.4%	34.2%	34.3%	34.6%	63.0%	62.0%
Tensas	37.7%	38.7%	28.6%	32.7%	33.0%	62.0%	64.0%
Union	26.0%	27.6%	27.1%	25.3%	25.2%	72.0%	71.0%
West Carroll	31.0%	31.8%	27.6%	30.5%	36.2%	54.0%	57.0%
United States	56.7%	56.1%	55.8%	55.4%	55.4%	100.0%	100.0%

Calculated using data available from U.S. Bureau of Economic Analysis.

Northeast Louisiana is situated in the Delta region, one of the poorest areas of the United States. The region is largely agricultural. Metropolitan Monroe constitutes the retail and healthcare center of the region. The table at the top of this page shows the proportion of area personal income made up of wage and salary disbursements. The percentages exclude proprietors' income and focus only on that of employers. (Inclusion of proprietors' income raises the above percentages by an average 10%, approximately.)

Note the small percentages in many of the parishes when compared to the Nation. These parishes are largely agricultural with limited employment opportunities and relatively low educational achievement. The more metropolitan areas of Ouachita Parish and the city of Ruston in Lincoln Parish display percentages that emulate the Nation more closely.

As would be expected in a poor area, total personal income is also low. The last two columns of the table illustrate the considerable differences between 2004 and 2005 area income and that of the Nation. Weighted average personal income in Northeast Louisiana in 2005 is approximately 71% of the National average.

Population and Demographic Data (continued)

2003-2004 Median Household Income by Parish, NE Louisiana, State, and US				
	2003: Median Household Income	2004: Median Household Income	2003: % of Louisiana Median Income	2004: % of Louisiana Median Income
Caldwell Parish	\$27,868	\$29,227	82.5%	83.0%
East Carroll Parish	\$20,356	\$20,622	60.2%	58.6%
Franklin Parish	\$24,207	\$25,046	71.6%	71.1%
Jackson Parish	\$30,681	\$31,714	90.8%	90.1%
Lincoln Parish	\$28,341	\$29,007	83.9%	82.4%
Madison Parish	\$22,494	\$22,548	66.6%	64.0%
Morehouse Parish	\$26,237	\$26,354	77.6%	74.8%
Ouachita Parish	\$32,752	\$32,969	96.9%	93.6%
Richland Parish	\$24,885	\$25,648	73.6%	72.8%
Tensas Parish	\$21,288	\$21,040	63.0%	59.7%
Union Parish	\$29,648	\$30,697	87.7%	87.2%
West Carroll Parish	\$26,469	\$26,661	78.3%	75.7%
NE LA (w/Lincoln)	\$29,127	\$29,591	86.2%	84.0%
Louisiana	\$33,792	\$35,216	100.0%	100.0%
United States	\$43,318	\$44,334	128.2%	125.9%

2003-2004 Persons below Poverty by Parish, NE Louisiana, State, and US				
	2003: % of population below poverty	2004: % of population below poverty	2003: % difference from Louisiana 2003 poverty rate	2004: % difference from Louisiana 2004 poverty rate
Caldwell Parish	19.0%	20.6%	-1.3%	1.4%
East Carroll Parish	33.9%	36.0%	13.6%	16.8%
Franklin Parish	24.2%	24.8%	3.9%	5.6%
Jackson Parish	16.9%	17.8%	-3.4%	-1.4%
Lincoln Parish	21.1%	22.6%	0.8%	3.4%
Madison Parish	28.5%	30.6%	8.2%	11.4%
Morehouse Parish	23.3%	25.0%	3.0%	5.8%
Ouachita Parish	19.6%	21.2%	-0.7%	2.0%
Richland Parish	23.4%	24.7%	3.1%	5.5%
Tensas Parish	28.7%	31.3%	8.4%	12.1%
Union Parish	17.5%	18.7%	-2.8%	-0.5%
West Carroll Parish	18.9%	22.7%	-1.4%	3.5%
NE LA (w/Lincoln)	21.2%	22.7%	0.9%	3.5%
Louisiana	20.3%	19.2%	0.0%	0.0%
United States	12.7%	12.7%	-7.6%	-6.5%

Labor Force Statistics

Labor Force					
	2002	2003	2004	2005	2006
City of Monroe	22,715	23,044	22,714	22,611	22,279
Caldwell	4,434	4,442	4,276	4,337	4,374
E. Carroll	3,097	3,147	3,017	2,919	2,982
Franklin	7,989	8,097	7,749	7,827	7,761
Jackson	6,570	6,586	6,419	6,435	6,437
Lincoln	18,589	18,367	18,345	18,673	18,580
Madison	5,055	5,040	4,670	4,686	4,649
Morehouse	12,512	12,769	11,881	11,725	11,475
Ouachita	71,659	72,477	71,621	72,685	71,950
Richland	8,439	8,813	8,452	8,576	8,560
Tensas	2,322	2,432	2,268	2,300	2,301
Union	10,484	10,655	10,394	10,491	10,394
W. Carroll	4,795	4,790	4,555	4,725	5,202
NE Louisiana	155,945	157,615	153,647	155,379	154,665
Louisiana	2,010,850	2,025,006	2,039,182	2,077,123	1,990,120

2002-2004 data revised 2005; 2005-2006 data revised 2006.

Source: Louisiana Department of Labor, www.laworks.net

Total Employment (Household Survey, including Proprietor Employment)					
	2002	2003	2004	2005	2006
City of Monroe	21,094	21,169	21,057	21,114	21,332
Caldwell	4,090	4,013	3,935	4,044	4,207
E. Carroll	2,732	2,731	2,630	2,558	2,743
Franklin	7,190	7,305	7,086	7,164	7,315
Jackson	6,167	6,033	6,018	6,080	6,191
Lincoln	17,477	17,188	17,233	17,484	17,802
Madison	4,531	4,478	4,241	4,287	4,393
Morehouse	11,455	11,494	10,749	10,732	10,785
Ouachita	67,969	68,210	67,850	68,569	69,276
Richland	7,765	8,054	7,799	7,962	8,161
Tensas	2,125	2,208	2,087	2,002	2,137
Union	9,841	9,881	9,763	9,889	9,991
W. Carroll	4,274	4,154	3,999	4,245	4,898
NE Louisiana	145,616	145,749	143,390	145,016	147,899
Louisiana	1,892,636	1,899,642	1,926,594	1,938,280	1,910,348

2002-2004 data revised 2005; 2005-2006 data revised 2006.

Source: Louisiana Department of Labor, www.laworks.net

Labor Force Statistics (continued)

Unemployment Rate					
	2002	2003	2004	2005	2006
City of Monroe	7.1%	8.1%	7.3%	6.6%	4.3%
Caldwell	7.8%	9.7%	8.0%	6.8%	3.8%
E. Carroll	11.8%	13.2%	12.8%	12.4%	8.0%
Franklin	10.0%	9.8%	8.6%	8.5%	5.7%
Jackson	6.1%	8.4%	6.2%	5.5%	3.8%
Lincoln	6.0%	6.4%	6.1%	6.4%	4.2%
Madison	10.4%	11.2%	9.2%	8.5%	5.5%
Morehouse	8.4%	10.0%	9.5%	8.5%	6.0%
Ouachita	5.1%	5.9%	5.3%	5.7%	3.7%
Richland	8.0%	8.6%	7.7%	7.2%	4.7%
Tensas	8.5%	9.2%	8.0%	13.0%	7.1%
Union	6.1%	7.3%	6.1%	5.7%	3.9%
W. Carroll	10.9%	13.3%	12.2%	10.2%	5.8%
NE Louisiana	6.6%	7.5%	6.7%	6.7%	4.4%
Louisiana	5.9%	6.2%	5.5%	6.7%	4.0%

Source: Louisiana Department of Labor, www.laworks.net

2002-2004 data revised 2005; 2005-2006 data revised 2006

Unemployment					
	2002	2003	2004	2005	2006
City of Monroe	1,621	1,875	1,657	1,497	947
Caldwell	344	429	341	293	167
East Carroll	365	416	387	361	239
Franklin	799	792	663	663	446
Jackson	403	553	401	355	246
Lincoln	1,112	1,179	1,112	1,189	778
Madison	524	562	429	399	256
Morehouse	1,057	1,275	1,132	993	690
Ouachita	3,690	4,267	3,771	4,116	2,674
Richland	674	759	653	614	399
Tensas	197	224	181	298	164
Union	643	774	631	602	403
West Carroll	521	636	556	480	304
NE Louisiana	10,329	11,866	10,257	10,363	6,766
Louisiana	118,214	125,364	112,588	138,843	79,772

Source: Louisiana Department of Labor, www.laworks.net

2002-2004 data revised 2005; 2005-2006 data revised 2006

Wage and Salary Employment (Number of Jobs in Parishes and State)

	2001	2002	2003	2004	2005
Louisiana	2,033,800	2,019,981	2,025,043	2,033,543	2,006,271
Caldwell	2,791	2,785	2,751	2,710	2,750
East Carroll	2,710	2,671	2,531	2,550	2,396
Franklin	6,782	6,439	6,273	6,250	6,215
Jackson	4,239	4,230	4,242	3,995	3,866
Lincoln	20,025	19,101	19,086	19,260	19,273
Madison	4,513	4,471	4,250	4,044	4,046
Morehouse	9,384	9,139	9,095	8,530	8,341
Ouachita	76,922	77,522	76,531	76,225	75,490
Richland	6,684	6,372	6,398	6,380	6,436
Tensas	2,048	2,016	1,783	1,811	1,814
Union	6,304	6,706	6,513	6,405	6,291
West Carroll	3,278	3,139	2,918	2,923	3,142
NE Louisiana	145,680	144,591	142,371	141,083	140,060

Source: U.S. Bureau of Economic Analysis, www.bea.gov; 2006 not available at printing.

Wage and Salary Disbursements (thousands of current dollars)

	2001	2002	2003	2004	2005	% growth 2001-04	% growth 2004-05
Louisiana	58,061,193	59,573,493	61,325,403	63,875,117	66,298,256	10.0%	3.8%
NE Louisiana	3,519,862	3,633,044	3,628,712	3,704,231	3,839,323	5.2%	3.6%
Caldwell	55,193	58,232	59,786	61,598	65,289	11.6%	6.0%
East Carroll	53,023	53,326	54,623	57,109	57,902	7.7%	1.4%
Franklin	122,435	122,606	121,050	126,753	130,358	3.5%	2.8%
Jackson	111,369	114,183	116,876	113,163	116,388	1.6%	2.8%
Lincoln	486,304	480,763	481,451	500,597	510,683	2.9%	2.0%
Madison	89,567	95,466	93,927	91,473	91,141	2.1%	(0.4%)
Morehouse	230,884	235,846	245,163	234,932	232,353	1.8%	(1.1%)
Ouachita	2,000,049	2,091,535	2,085,158	2,129,031	2,212,354	6.4%	3.9%
Richland	135,737	134,944	138,880	145,182	152,104	7.0%	4.8%
Tensas	42,215	41,153	37,474	41,174	44,446	(2.5%)	7.9%
Union	125,453	137,001	133,237	137,897	141,756	9.9%	2.8%
West Carroll	67,633	67,989	61,087	65,322	84,549	(3.4%)	29.4%
United States						9.0%	5.1%

Source: U.S. Bureau of Economic Analysis. 2006 not available at printing.

Labor Force Statistics (continued)

Labor Market Data by Industry, by Region and Selected Parishes, 2005-2006

	2005				2006			
	Units	Employment	Estimated total wages	Weekly Wage \$	Units	Employment	Estimated total wages	Weekly Wage \$
Northeast Louisiana (w/ Lincoln Parish)								
All Industries	9,163	128,662	\$3,581,564,316	\$535.33	9,371	129,451	\$3,779,037,437	\$561.40
Agriculture, forestry, fishing and hunting	330	2,786	\$57,827,698	\$399.16	328	2,638	\$60,537,741	\$441.36
Mining	51	323	\$13,399,861	\$797.80	57	385	\$20,296,163	\$1,015.11
Utilities	116	1,048	\$43,068,315	\$790.30	114	1,045	\$42,498,498	\$782.27
Construction	818	6,654	\$191,756,057	\$554.20	839	6,955	\$220,168,374	\$608.77
Manufacturing	293	13,811	\$561,153,841	\$781.36	299	13,156	\$561,961,006	\$821.45
Wholesale trade	472	4,722	\$171,135,296	\$696.96	473	4,766	\$192,760,906	\$777.75
Retail trade	1,398	16,613	\$318,465,383	\$368.65	1427	16,944	\$340,498,686	\$386.46
Transportation and warehousing	386	3,327	\$115,346,660	\$666.73	403	3,374	\$119,076,280	\$678.80
Information	153	2,315	\$82,370,376	\$684.25	153	2,340	\$84,431,657	\$694.03
Finance and insurance	680	5,457	\$192,420,522	\$678.10	706	5,455	\$199,790,938	\$704.33
Real estate and rental and leasing	407	1,698	\$39,601,030	\$448.50	414	1,802	\$43,361,877	\$462.82
Professional and technical services	733	3,544	\$118,484,456	\$642.93	758	3,674	\$137,728,091	\$720.86
Management of companies and enterprises	35	1,866	\$118,542,080	\$1,221.68	34	1,787	\$118,141,219	\$1,271.37
Administrative and waste services	343	4,604	\$103,479,545	\$432.23	358	4,983	\$137,744,570	\$531.62
Educational services	73	15,291	\$426,833,740	\$536.81	77	15,016	\$438,283,967	\$561.30
Health care and social assistance	1,018	23,683	\$648,517,941	\$526.60	1039	23,980	\$667,363,803	\$535.20
Arts, entertainment, and recreation	100	1,057	\$14,489,848	\$263.62	106	1,123	\$15,149,935	\$259.43
Accommodation and food services	501	9,587	\$95,357,749	\$191.28	517	9,743	\$102,349,328	\$202.02
Other services, except public administration	781	3,475	\$69,644,000	\$385.41	788	3,530	\$72,324,661	\$394.04
Public administration	418	6,705	\$197,031,130	\$565.11	417	6,642	\$201,270,908	\$582.79

Note: Due to unclassified and non-publishable data, major divisions may be under-reported. Annual values for 2006 compiled from quarterly data.

	2005				2006			
	Units	Employment	Estimated total wages	Weekly Wage \$	Units	Employment	Estimated total wages	Weekly Wage \$
Ouachita Parish								
All Industries	4,642	70,426	\$2,098,581,662	\$573.05	4,733	71,109	\$2,211,165,782	\$597.99
Agriculture, forestry, fishing and hunting	22	130	\$3,583,622	\$530.12	23	150	\$4,035,233	\$518.20
Mining	23	123	\$4,657,174	\$728.14	25	124	\$5,618,278	\$869.57
Utilities	25	529	\$23,947,796	\$870.58	24	539	\$23,464,307	\$837.17
Construction	435	3,395	\$101,559,001	\$575.27	445	3,857	\$127,344,449	\$635.01
Manufacturing	158	7,231	\$318,428,818	\$846.86	159	7,121	\$329,383,460	\$889.55
Wholesale trade	264	2,607	\$98,003,870	\$722.93	260	2,683	\$115,046,287	\$824.53
Retail trade	718	9,124	\$191,344,640	\$403.30	739	9,273	\$193,210,920	\$400.70
Transportation and warehousing	135	1,869	\$69,059,825	\$710.58	139	1,929	\$69,659,941	\$694.46
Information	91	1,793	\$66,218,082	\$710.22	91	1,786	\$68,206,652	\$734.52
Finance and insurance	399	3,668	\$132,969,552	\$697.14	407	3,598	\$134,326,170	\$718.05
Real estate and rental and leasing	218	1,015	\$25,537,912	\$483.86	228	1,144	\$29,275,097	\$492.12
Professional and technical services	467	2,532	\$86,892,842	\$659.96	473	2,538	\$97,600,432	\$739.53
Management of companies and enterprises	20	1,495	\$105,568,456	\$1,357.97	19	1,409	\$106,058,426	\$1,447.80
Administrative and waste services	209	3,209	\$61,963,924	\$371.33	215	3,269	\$69,080,684	\$406.45
Educational services	35	6,659	\$187,106,913	\$540.35	36	6,580	\$195,612,782	\$571.72
Health care and social assistance	556	12,824	\$399,171,376	\$598.59	566	12,687	\$400,476,908	\$607.03
Arts, entertainment, and recreation	45	699	\$9,637,334	\$265.14	49	754	\$10,136,209	\$258.61
Accommodation and food services	266	5,910	\$63,367,997	\$206.20	280	6,098	\$68,669,653	\$216.55
Other services, except public administration	427	2,345	\$47,238,034	\$387.39	425	2,401	\$49,966,922	\$400.17
Public administration	98	3,212	\$110,669,965	\$662.60	97	3,099	\$111,698,952	\$693.09

Labor Force Statistics (continued)

Labor Market Data by Industry, by Region and Selected Parishes, 2005-2006

Morehouse Parish	2005				2006			
	Units	Employment	Estimated total wages	Weekly Wage \$	Units	Employment	Estimated total wages	Weekly Wage \$
All Industries	608	7,454	\$210,092,521	\$542.02	618	7,275	\$205,111,894	\$542.19
Agriculture, forestry, fishing and	54	400	\$8,697,839	\$418.17	56	412	\$8,805,112	\$410.74
Mining	2*	*	*	*	2	*	*	*
Utilities	11	74	\$3,247,659	\$843.99	10	62	\$2,682,988	\$835.56
Construction	50	358	\$10,283,601	\$552.41	47	336	\$9,960,859	\$570.53
Manufacturing	16	*	*	*	17	*	*	*
Wholesale trade	22	232	\$10,079,522	\$835.50	24	237	\$10,706,593	\$870.60
Retail trade	99	1,086	\$22,066,178	\$390.75	100	1,033	\$22,693,092	\$422.67
Transportation and warehousing	26	168	\$5,707,537	\$653.34	30	181	\$6,277,235	\$666.02
Information	9	110	\$3,282,695	\$573.90	8	106	\$2,821,707	\$513.13
Finance and insurance	47	236	\$7,644,149	\$622.89	51	231	\$7,943,848	\$662.04
Real estate and rental and leasing	26	113	\$1,700,081	\$289.33	26	91	\$1,572,237	\$333.17
Professional and technical services	32	104	\$2,907,539	\$537.64	32	104	\$2,863,091	\$529.42
Management of companies and	0	0	\$0	\$0.00	0	0	\$0	\$0.00
Administrative and waste services	14	68	\$1,195,846	\$338.19	14	62	\$1,225,532	\$383.22
Educational services	4	*	*	*	4	*	*	*
Health care and social assistance	72	1,523	\$34,669,002	\$437.76	76	1,589	\$36,693,490	\$444.22
Arts, entertainment, and recreation	5	43	\$794,184	\$355.18	5	49	\$796,838	\$315.95
Accommodation and food services	32	459	\$4,119,656	\$172.60	30	450	\$4,255,172	\$181.74
Other services, except public administration	52	201	\$2,724,106	\$260.63	52	215	\$3,017,086	\$269.55
Public administration	34	398	\$10,360,987	\$500.63	34	405	\$10,966,389	\$521.04

* non-published data

	2005				2006			
	Units	Employment	Estimated total wages	Weekly Wage \$	Units	Employment	Estimated total wages	Weekly Wage \$
Lincoln Parish								
All Industries	1,110	17,593	\$480,161,163	\$524.86	1,156	18,020	\$512,733,281	\$547.20
Agriculture, forestry, fishing and hunting	31	285	\$6,818,590	\$460.09	32	368	\$8,401,085	\$439.02
Mining	11	115	\$5,285,861	\$883.92	13	160	\$9,462,788	\$1,135.58
Utilities	24	131	\$4,430,244	\$650.36	23	124	\$4,603,621	\$716.85
Construction	92	1,034	\$31,148,141	\$579.31	100	1,030	\$35,131,321	\$656.08
Manufacturing	36	1,608	\$63,698,069	\$761.79	37	1,489	\$61,666,433	\$796.30
Wholesale trade	57	820	\$29,693,819	\$696.38	55	855	\$34,005,953	\$764.64
Retail trade	173	2,167	\$41,380,377	\$367.22	177	2,251	\$44,936,332	\$383.86
Transportation and warehousing	42	298	\$11,126,872	\$718.05	45	292	\$11,812,055	\$777.26
Information	18	191	\$6,592,960	\$663.81	18	214	\$6,405,359	\$576.96
Finance and insurance	82	599	\$23,671,941	\$759.98	93	688	\$27,953,169	\$781.05
Real estate and rental and leasing	59	271	\$6,260,741	\$444.28	59	263	\$5,761,130	\$422.06
Professional and technical services	85	382	\$12,034,731	\$605.86	92	424	\$15,946,329	\$723.26
Management of companies and enterprises	7	77	\$6,713,740	\$1,676.76	7	70	\$6,054,198	\$1,663.24
Administrative and waste services	55	537	\$11,984,821	\$429.19	53	579	\$13,318,596	\$442.36
Educational services	9	3,511	\$110,573,850	\$605.65	12	3,535	\$111,765,084	\$608.01
Health care and social assistance	100	3,065	\$73,819,342	\$463.17	105	3,200	\$78,088,221	\$469.24
Arts, entertainment, and recreation	8	72	\$630,260	\$168.34	9	77	\$732,528	\$184.14
Accommodation and food services	79	1,653	\$14,010,847	\$163.00	78	1,634	\$14,792,700	\$174.10
Other services, except public administration	93	329	\$6,371,983	\$372.46	97	323	\$6,816,559	\$405.84
Public administration	41	432	\$13,658,196	\$608.00	41	434	\$14,859,092	\$658.79

Labor Force Statistics (continued)

Labor Market Data by Selected Parishes, 2005-2006

Parishes	2005				2006			
	Units	Employment	Estimated total wages	Weekly Wage \$	Units	Employment	Estimated total wages	Weekly Wage \$
Caldwell	247	2465	\$58,760,815	\$458.42	252	2,506	\$61,208,328	\$469.75
East Carroll	209	1994	\$48,066,045	\$463.56	208	2,057	\$51,821,656	\$484.42
Franklin	456	5572	\$114,756,196	\$396.06	469	5,411	\$118,902,377	\$422.58
Jackson	310	3516	\$108,227,271	\$591.95	315	3,405	\$108,653,523	\$613.70
Madison	293	3467	\$78,773,598	\$436.94	300	3,376	\$79,843,351	\$454.85
Richland	511	5891	\$139,312,224	\$454.78	516	5,938	\$147,935,554	\$479.12
Tensas	165	1471	\$36,863,715	\$481.93	164	1,471	\$42,107,998	\$550.68
Union	394	5771	\$131,302,427	\$437.54	411	5,575	\$135,677,413	\$467.99
West Carroll	220	3041	\$76,666,679	\$484.83	229	3,309	\$103,876,280	\$603.69

Source: www.laworks.net, Louisiana Employment and Wages Annual Report, 2005, and quarterly data for 2006.

Average Annual Wages per Job (2001-05 current dollars)

	2001	2002	2003	2004	2005	2001-04	2004-05
						% growth	% growth
Louisiana	28,548	29,492	30,284	31,411	33,046	10.0%	5.2%
NE Louisiana	24,172	24,927	25,497	25,544	25,951	5.7%	1.6%
Caldwell	19,775	20,909	21,732	22,730	23,741	14.9%	4.4%
East Carroll	19,566	19,965	21,582	22,396	24,166	14.5%	7.9%
Franklin	18,053	19,041	19,297	20,280	20,975	12.3%	3.4%
Jackson	26,272	26,994	27,552	28,326	30,106	7.8%	6.3%
Lincoln	24,285	25,170	25,225	25,992	26,437	7.0%	1.7%
Madison	19,846	21,352	22,100	22,619	22,526	14.0%	-0.4%
Morehouse	24,604	25,807	29,956	27,542	27,857	11.9%	1.1%
Ouachita	26,001	26,980	27,246	27,931	29,307	7.4%	4.9%
Richland	20,308	21,178	21,707	22,756	23,633	12.1%	3.9%
Tensas	20,613	20,413	21,017	22,736	24,502	10.3%	7.8%
Union	19,901	20,430	20,457	21,530	22,533	8.2%	4.7%
West Carroll	20,632	21,659	20,935	22,348	26,909	8.3%	20.4%
United States	35,582	36,150	37,169	38,792	40,146	9.0%	3.5%

Source: Bureau of Economic Analysis, U.S. Department of Commerce.

These 11 companies employ more than 10% of the wage and salary workers in NE LA. One conspicuous absence in this year's edition is Guide Corporation, which closed its headlight manufacturing plant in Monroe in early 2007. The closure resulted in the loss of 800 manufacturing jobs in the region.

Commercial/industrial utility prices in Louisiana have retreated somewhat from last year's highs that generally exceeded National rates. The reductions are especially noticeable for non-wintertime natural gas.

Strong gains in building permits portend strong employment in construction for 2007-2008.

Major Area (private/non-retail) Businesses

Company	Product/Service	Employees
Chase Manhattan Mortgage/J.P. Morgan Chase	Mortgage/Financial Services Center	1,800
St. Francis Medical Center	Medical Services	1,600
Graphics Packaging	Pulp & paper processing	1,500
CenturyTel	Telecommunications Services	1,470
Glenwood Regional Medical Center	Medical Services	950
International Paper (Morehouse Parish)	Paper Manufacturing	600
Entergy	Electrical Utility	470
Bancroft Bag	Bags, Paper Containers	450
Tyco	Plastics	420
ANGUS Chemical Company	Specialty Chemicals	150
Pilgrim's Pride (Union Parish)	Chicken Processing	1,900

Commercial/Industrial Utility Rates for Louisiana and the United States, Feb. 2006-Feb. 2007

	Feb-06	Mar-06	Apr-06	May-06	Jun-06	Jul-06	Aug-06	Sep-06	Oct-06	Nov-06	Dec-06	Jan-07	Feb-07
Electricity cents/kwh:													
U.S. Commercial	9.04	8.97	9.08	9.15	9.74	9.86	9.96	9.78	9.4	9.11	8.97	9.11	9.28
Louisiana Commercial	9.84	8.88	8.69	8.31	8.80	8.76	8.86	9.24	9.75	8.77	8.46	9.00	9.36
U.S. Industrial	5.87	5.82	5.85	5.91	6.35	6.5	6.56	6.27	6.12	5.97	5.96	6.12	6.2
Louisiana Industrial	7.99	7.22	6.50	6.36	6.49	6.74	6.74	7.03	7.56	6.65	5.94	6.58	6.99
Natural Gas \$/mcf:													
U.S. Commercial	\$13.00	\$12.01	\$11.53	\$11.54	\$11.03	\$10.91	\$11.18	\$11.15	\$10.13	\$11.05	\$11.57	\$11.12	\$11.23
Louisiana Commercial	\$12.04	\$12.25	\$11.36	\$11.79	n/a	\$10.69	\$10.35	\$9.32	\$9.96	\$11.96	\$12.73	\$11.87	\$11.95
U.S. Industrial	\$9.29	\$8.23	\$7.95	\$7.65	\$6.92	\$6.79	\$7.38	\$7.23	\$5.62	\$7.79	\$8.26	\$7.36	\$8.27
Louisiana Industrial	\$8.83	\$7.37	\$7.45	\$7.26	\$7.07	\$7.14	\$7.82	\$7.19	\$5.23	\$7.53	\$7.57	\$6.56	\$7.93

Source: U.S. Dept. of Energy, Energy Information Agency

Business Climate Data (continued)

Construction Permits for Monroe MSA by Parish: 2005-2006									
	Number of Projects		Dwelling Units		Square Feet (000's)		Value (millions \$)		
	2006	2005	2006	2005	2006	2005	2006	2005	%Change
Total Non-Residential	28	32	n/a	n/a	412	279	\$44.8	\$37.9	18.2%
Ouachita	25	30	n/a	n/a	301	276	\$37.0	\$37.4	-1.1%
Union	3	2	n/a	n/a	112	4	\$7.8	\$0.5	*
Total Residential	761	541	763	546	1,603	1,142	\$122.7	\$83.8	46.4%
Ouachita	514	397	516	402	1,082	838	\$89.9	\$65.5	37.3%
Union	247	144	247	144	522	304	\$32.7	\$18.3	78.7%
Total Non-Building	26	23	n/a	n/a	n/a	n/a	\$85.1	\$85.0	0.1%
Ouachita	18	19	n/a	n/a	n/a	n/a	\$26.2	\$82.2	-68.1%
Union	8	4	n/a	n/a	n/a	n/a	\$58.9	\$2.8	*
Total all projects	815	596	763	546	1,603	1,142	\$252.6	\$206.7	22.2%

In the % Change Column, increases of 100% or more are indicated by *.

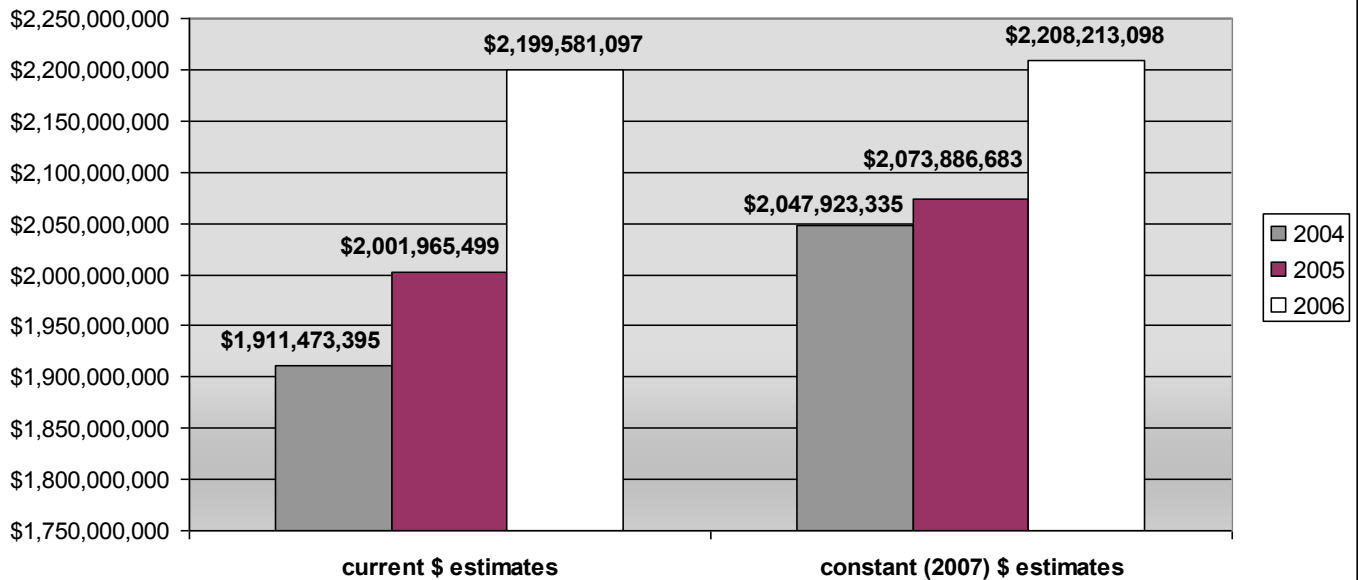
Source: Dodge MarkeTrack (McGraw Hill Construction Research and Analysis)

Hotel Motel Occupancy Rates 2005-06								
	% Occupancy				Average Room Rate			# of rooms
	2005	2006	% change		2005	2006	% change	
Monroe MSA	70.9%	68.8%	-3.0%		\$60.64	\$62.13	2.5%	2,073
*Louisiana North Area	69.4%	66.3%	-4.5%		\$58.93	\$60.15	2.1%	7,858
State of Louisiana	70.2%	67.3%	-4.1%		\$86.72	\$88.94	2.6%	72,253

*LA North Area excludes Monroe and Shreveport MSAs.

Source: LA Office of Tourism.

Estimated Non-Auto Retail Sales for Ouachita Parish



Estimated Inflation-Adjusted (2007) per Capita Non-Automotive Retail Sales*

	2004	2005	2006	% chg 05-06
Ouachita Parish	\$13,815	\$13,990	\$14,742	5.4%
Lincoln Parish	\$20,243	\$22,639	\$24,867	9.8%
United States	n/a	\$8,516	n/a	n/a

*Estimates of Parish retail sales are calculated from local sales tax collections.

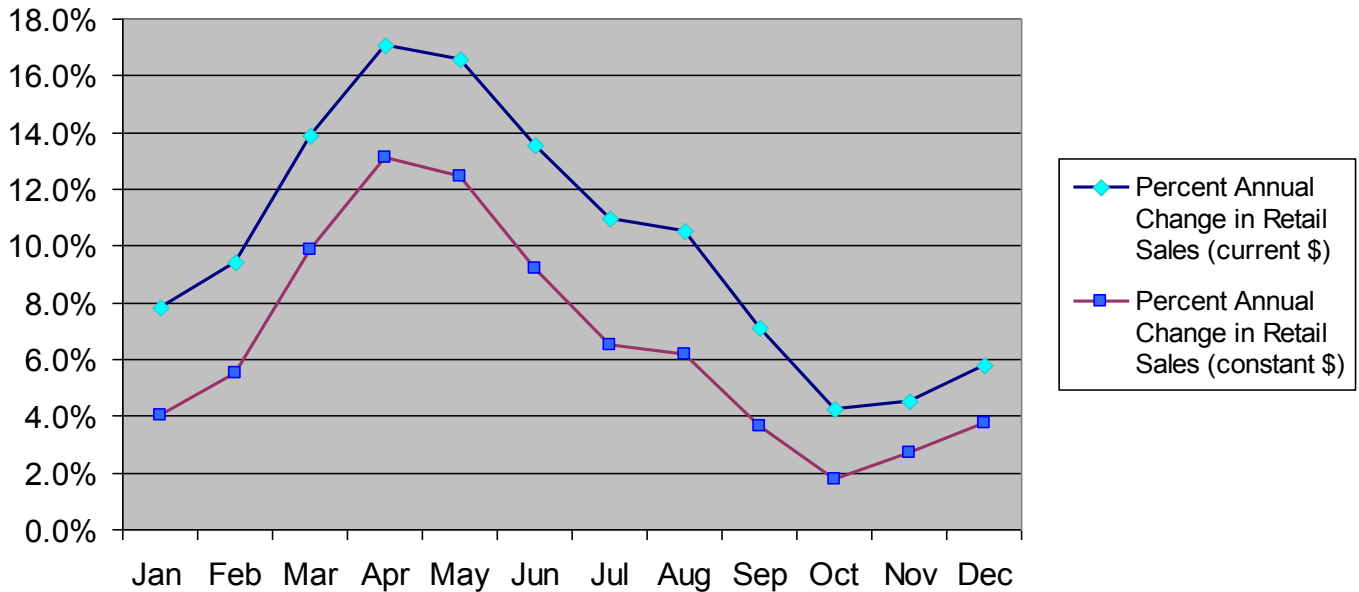
Ouachita Parish is the retail center for the Northeast Louisiana region. Estimated retail sales in the Parish (and, by extension, in Northeast Louisiana) increased dramatically in 2006. The growth paralleled that of the State in the aftermath of Hurricanes Katrina and Rita. Strong increases in non-automotive retail sales likely resulted from hurricane-related insurance settlement dollars, federal assistance dollars, and income from relocated population that flowed into the Monroe MSA from elsewhere in the State. The increases are considerable even after inflation adjustments. Current dollar estimates for 2006 are nearly 9.9% ahead of 2005. Constant dollar estimates are up nearly 6.5%. (Although not illustrated in this document, non-automotive retail sales in Lincoln Parish are also well ahead of 2005: 18.8% increase in current dollar sales, 15.0% increase in constant dollars.) Retail sales in Ouachita Parish are estimated from monthly sales tax revenues.

The post-hurricane retail gains are undiminished in the first quarter of 2007 (see adjacent page line chart, 2007 not shown). The chart on the adjacent page illustrates the same month year-over-year percentage changes in retail sales for the years 2005 to 2006. (Three-month averages are employed to smooth out some volatility in the data.) While the year-over-year same-month percentage changes have declined, the changes for all months are still positive for both current-dollar and constant-dollar (inflation-adjusted) estimates, suggesting that retailing is still a growth industry in the Parish.

The magnitude of retail sales for Ouachita Parish is illustrated especially by the relative per-capita figures. Non-automotive (constant \$) per-capita retail sales in Ouachita Parish in 2005 are \$13,990 versus \$8,516 in the U.S.

Business Climate Data (continued)

Year over Year (3-Month Running Average) Percentage Change in Estimated* Non-Automotive Retail Sales: 2005 to 2006



* Retail sales are estimated from local sales tax revenue.

Total New Car, Van, and Light Truck Registrations * (includes fleet)

	2004	2005	2006	change 04-06
NE LA	14,925	15,154	15,163	238
Ouachita	6,527	6,862	6,725	198
Lincoln	1,913	1,926	1,978	65
Morehouse	1,185	1,012	1,036	-149
Union	1,033	1,057	978	-55
Louisiana	240,203	260,050	294,253	54,050

Estimated Constant \$ Value of New Vehicle Registrations * : Ouachita Only

		Annual % Change
Estimated Constant \$ Auto Sales: 2004	\$249,853,005	
Estimated Constant \$ Auto Sales: 2005	\$251,614,036	0.70%
Estimated Constant \$ Auto Sales: 2006	\$238,254,422	-5.30%

* New Car/truck registrations obtained from Cross-Sell Reports: Statewide Dealer Summaries.

	Sales Tax%	Property Tax Millage range* (\$ amount/\$1000)
Louisiana Portion (statewide): 4.00		
Local Sales Tax Rates:		
Caldwell Parish	5.00	112.41-123.29
East Carroll Parish		103.96-120.99
Lake Providence	7.00	
Balance of Parish	5.00	
Franklin Parish		73.65-87.07
Gilbert, Wisner, Winnsboro	5.00	
Balance of Parish	4.00	
Jackson Parish	5.00	101.86-111.61
Lincoln Parish		74.0-155.70
Ruston	4.50	
Grambling	4.75	
Dubach	3.75	
Choudrant	4.00	
Balance of Parish	2.75	
Madison Parish		103.95-137.69
Tallulah, Richmond	5.50	
Delta	4.50	
Balance of Parish	3.50	
Morehouse Parish		71.35-100.91
Bastrop Including District 1	6.00	
Bastrop Excluding District 1	5.50	
Mer Rouge, Bonita, Collinston	5.00	
Rural	3.00	
Ouachita Parish		79.11-136.38
Monroe	5.99	
Richwood, Sterlington, W. Monroe	5.50	
East Ouachita	4.60	
West Ouachita	5.60	
Richland Parish		78.07-118.15
Delhi, Rayville	5.50	
Mangham	5.00	
Balance of Parish	4.00	
Tensas Parish		93.30-118.20
Newellton, Waterproof	6.00	
St. Joseph	6.25	
Balance of Parish	5.25	
Union		56.32-66.32
Bernice	6.00	
Farmerville	5.50	
Marion, Junction City	5.00	
Balance of Parish	4.00	
West Carroll		65.25 - 83.85
Oak Grove	6.00	
Balance of Parish	5.00	

Source for Sales Tax Rates: www.laota.com

Millage rates vary between and within Parishes. Some Parishes have numerous rates that are voting-ward specific. The rates given in the adjacent listing are the range of millage rates within each Parish and can be used to estimate the (range of) expected property tax liability.

Millage rates shown were obtained via telephone interviews with Parish Assessors' offices.

To find rates for specific Parish wards, please contact the author, Robert Eisenstadt, at eisenstadt@ulm.edu.

To calculate the taxes on your primary home, you must take the assessed value, which is a percentage of "fair market value," and multiply it by the appropriate tax or millage rate to arrive at the amount due.

If, as an example, you had \$1000 of taxable assessed value and the tax rate was 120 mills, you would pay \$1000 X .120 = \$120 in taxes.

If your home was valued at \$100,000, and you were eligible and had signed for homestead exemption, you would calculate your taxes as follows:

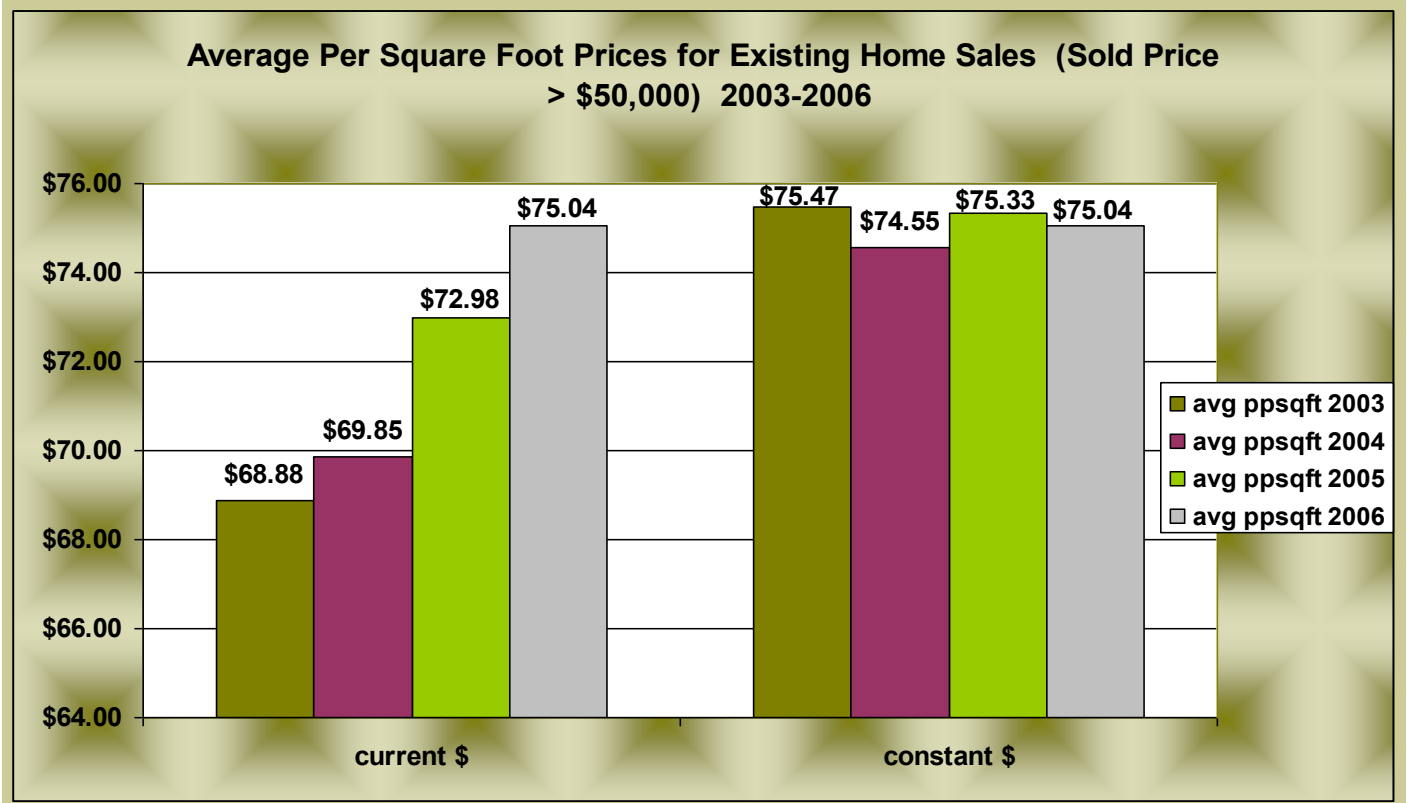
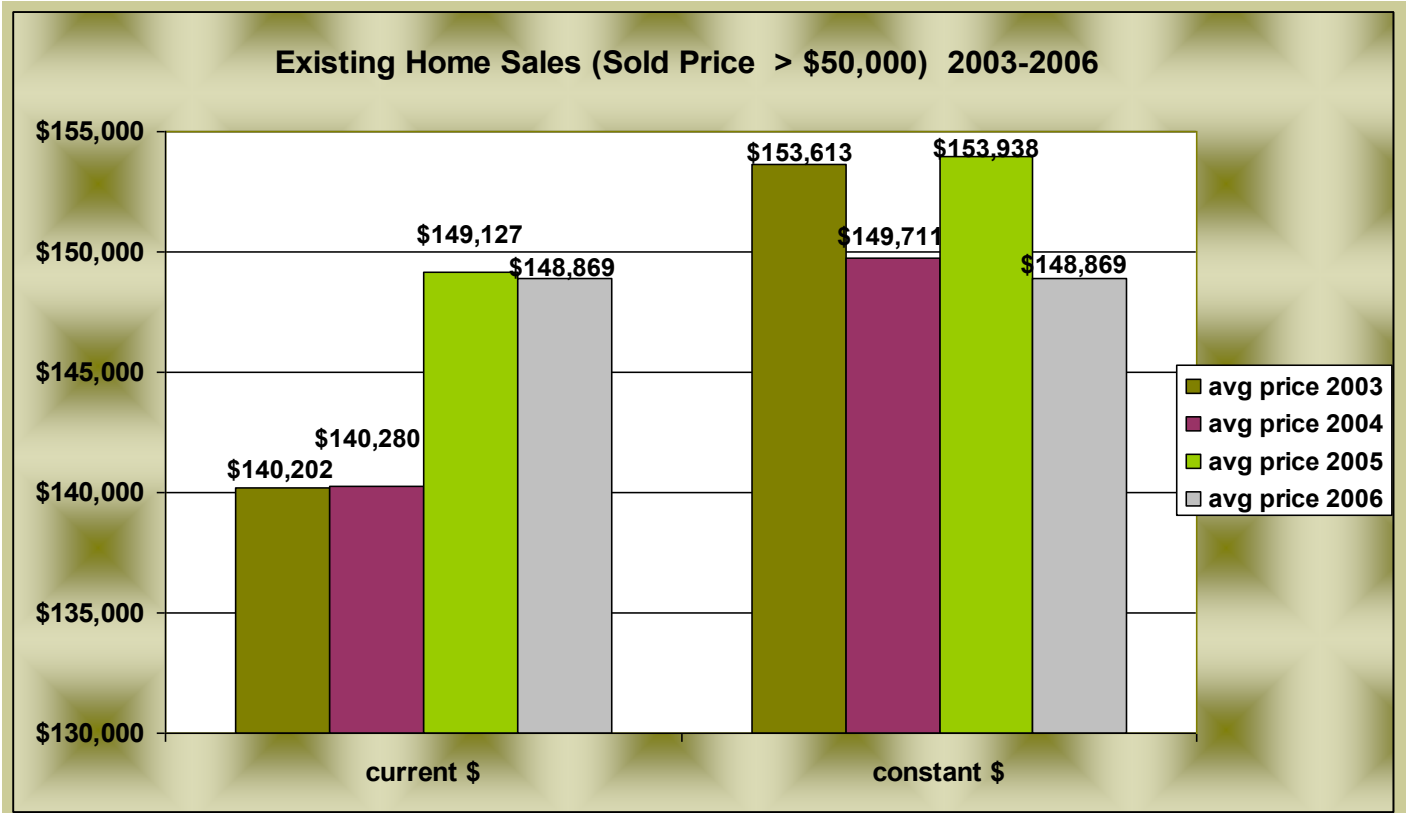
$$\begin{array}{r}
 \$100,000 \text{ (Fair Market Value)} \\
 \times 10\% \text{ (Level of Assessment)} \\
 \hline
 \$10,000 \text{ (Assessed Value)} \\
 -\$7,500 \text{ (Maximum Homestead Exemption)} \\
 \hline
 \$2,500 \text{ (Taxable Value)} \\
 \times 0.120 \text{ (Tax Rate)} \\
 \hline
 \$300 \text{ (Total Parish Taxes Due)}
 \end{array}$$

Note: Homestead exemption does not apply to millages assessed specifically for Monroe City.

To calculate the taxes on your business: Property taxes (millage rates) are levied on 15% of the assessed value of the business. For example, if the millage rate is 120 you would pay \$120 per \$1000 increment of 15% of the market value. An example is provided below for a representative business valued at \$100,000 and a millage rate of 120.

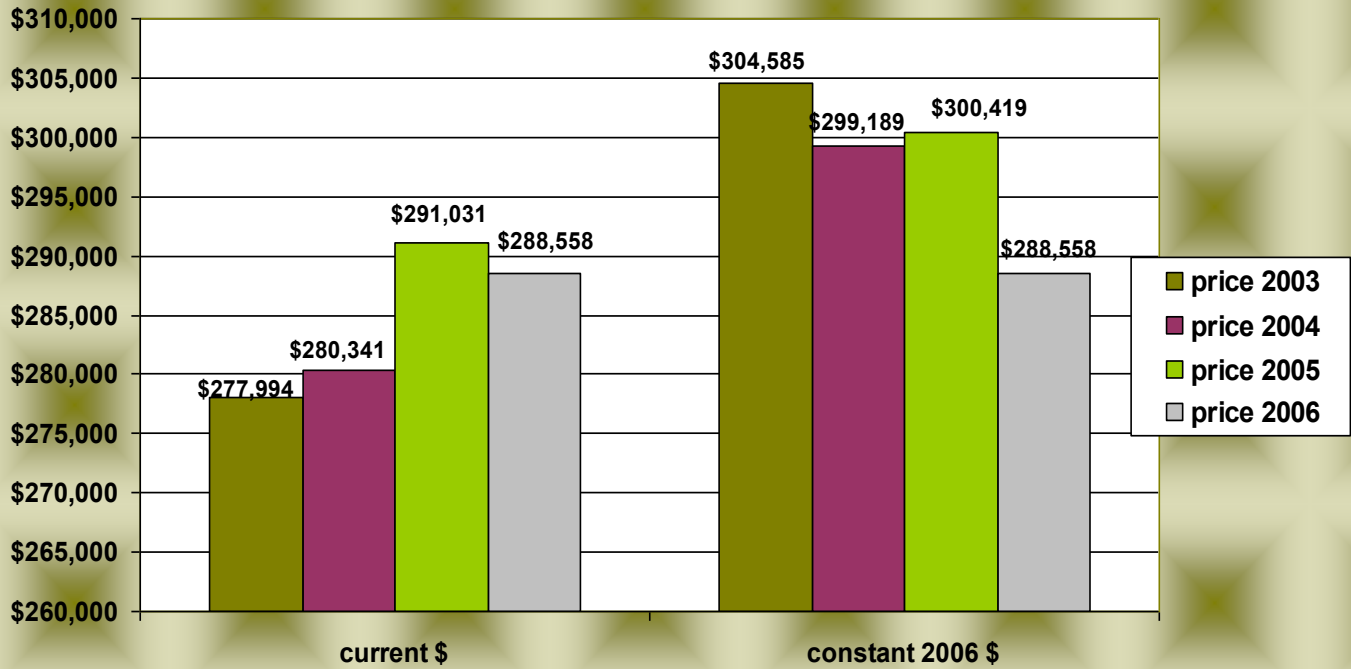
$$\begin{array}{r}
 \$100,000 \text{ (Fair Market Value)} \\
 \times 15\% \text{ (Level of Assessment)} \\
 \hline
 \$15,000 \text{ (Assessed Value)} \\
 \times 0.120 \text{ (Tax Rate)} \\
 \hline
 \$1,800 \text{ (Taxes Due)}
 \end{array}$$

Quality of Life

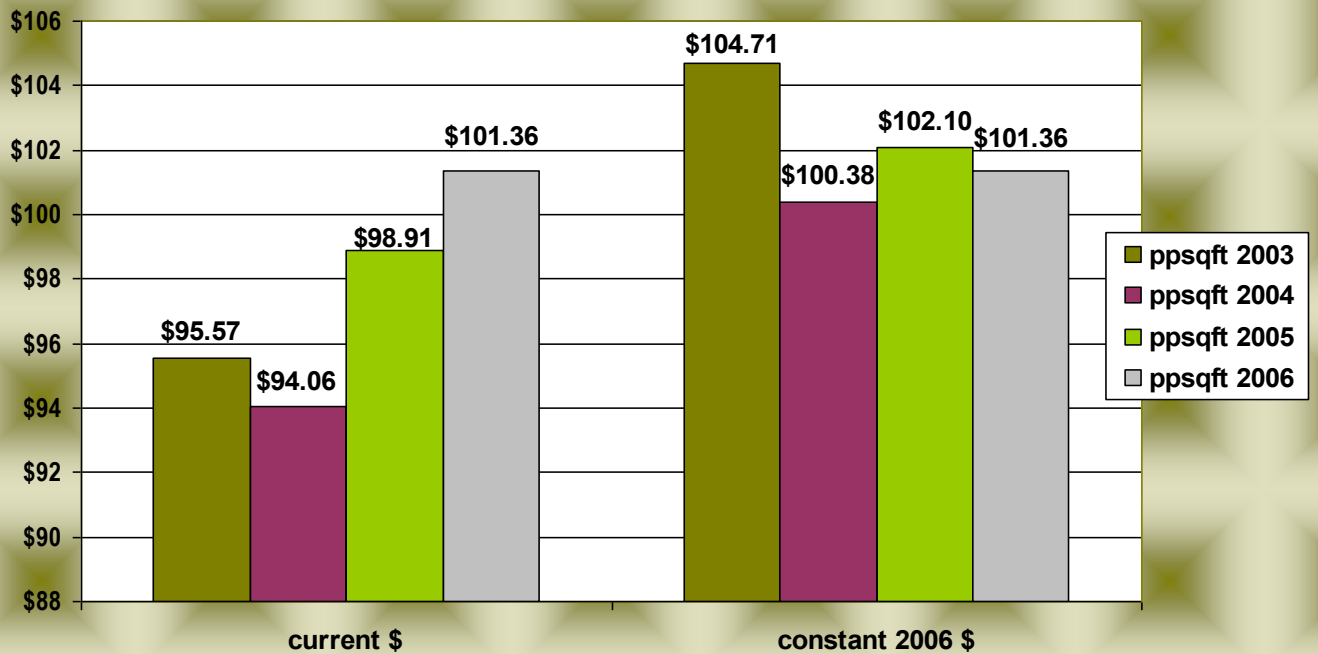


Source: Northeast Louisiana Board of Realtors Multi-Listing Service Data, Ouachita and Contiguous Parishes

Existing Home Sales (Sold Price >\$200,000) 2003-2006

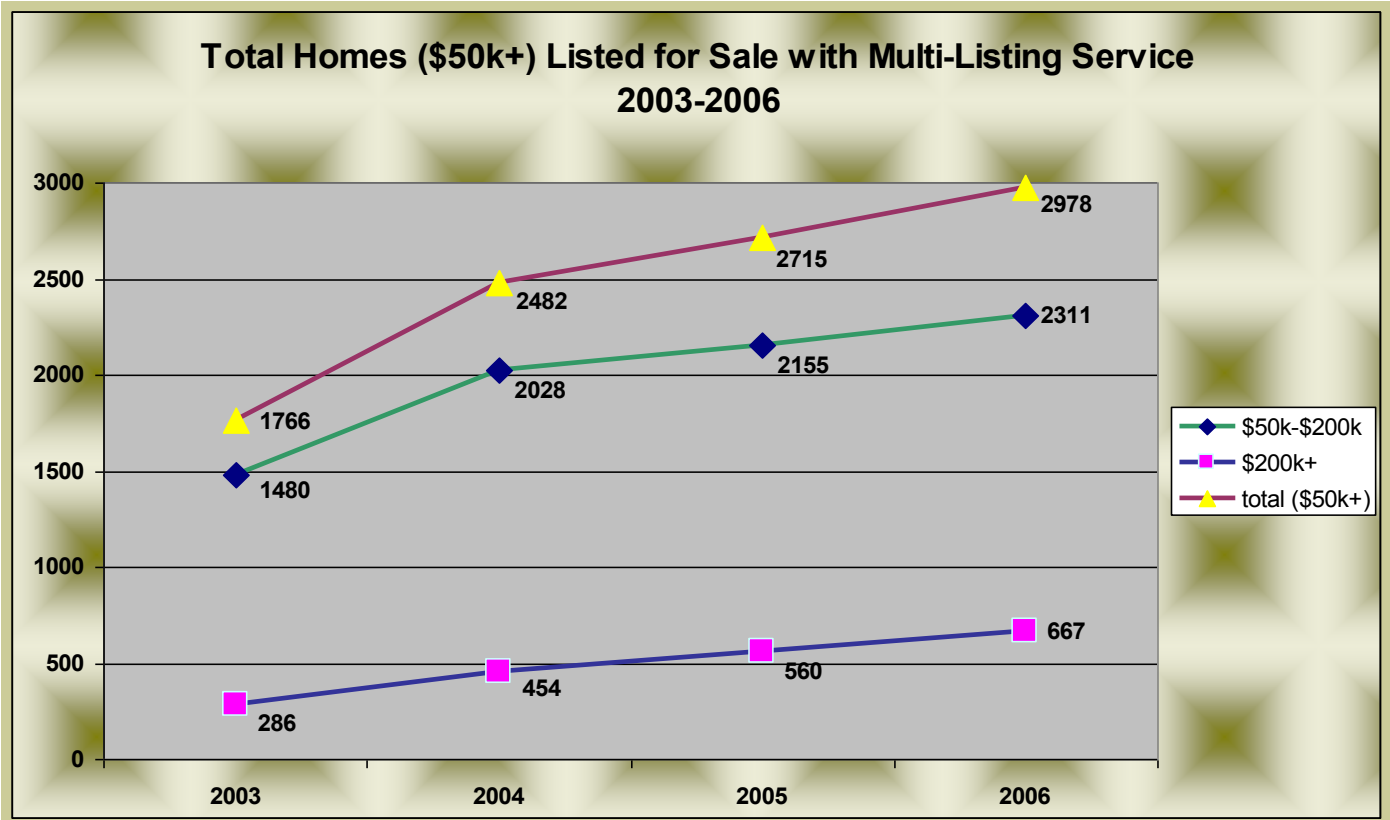


Average per Square Foot Prices for Existing Home Sales (Sold Price > \$200,000) 2003-2006



Source: Northeast Louisiana Board of Realtors Multi-Listing Service Data, Ouachita and Contiguous Parishes

Quality of Life (continued)



Source: Northeast Louisiana Board of Realtors

Residential Utility Rates for Louisiana and the United States: March 2006- February 2007												
Electricity Rates	Mar-06	Apr-06	May-06	Jun-06	Jul-06	Aug-06	Sep-06	Oct-06	Nov-06	Dec-06	Jan-07	Feb-07
United States residential average cents/kwh	9.84	10.31	10.60	10.85	10.97	10.94	10.94	10.55	10.22	9.81	10.05	9.88
Louisiana residential average cents/kwh	8.58	8.66	8.72	9.25	9.19	9.31	9.85	10.12	8.78	8.28	8.93	9.11
Natural Gas Prices	Mar-06	Apr-06	May-06	Jun-06	Jul-06	Aug-06	Sep-06	Oct-06	Nov-06	Dec-06	Jan-07	Feb-07
United States residential average price/mcf	\$13.20	\$13.30	\$14.39	\$15.03	\$15.67	\$16.11	\$15.63	\$12.71	\$12.49	\$12.53	\$12.08	\$12.13
Louisiana residential average price/mcf	\$13.98	\$14.66	\$16.87	n/a	n/a	\$17.51	\$16.83	\$14.22	\$13.41	\$13.05	\$11.89	\$12.87

source: U.S. Energy Information Agency, www.eia.doe.gov.

School Performance Scores* and Performance Labels by School District: 2005-06

Rank in State (out of 60 School Districts)	School District	2005-2006 (District) Performance Scores (DPS)	DPS Label	Student Enrollment in District
20	Caldwell Parish	86.9	Two Stars	1,856
43	City of Monroe	75.2	One Star	9,211
56	East Carroll Parish	64.1	One Star	1,549
54	Franklin Parish	66.8	One Star	3,451
21	Jackson Parish	85.6	Two Stars	2,201
19	Lincoln Parish	88.5	Two Stars	5,989
58	Madison Parish	56.0	Unacceptable	2,290
39	Morehouse Parish	79.5	One Star	5,056
3	Ouachita Parish	101.0	Three Stars	18,646
44	Richland Parish	75.0	One Star	3,436
51	Tensas Parish	69.7	One Star	872
48	Union Parish	71.2	One Star	3,158
10	West Carroll Parish	97.0	Two Stars	2,302
	State of Louisiana	85.3	Two Stars	653,786

Performance Scores* for Free/Reduced Lunch-Eligible Students, Teacher Certification Label by District

Rank in State (out of 60 School Districts)	School District	Free/Reduced Lunch (Group) Performance Scores (GPS)	Percent Free/Reduced Lunch Students	Teacher Certification Label
15	Caldwell Parish	80.4	66.6	Adequate
32	City of Monroe	74.5	78.9	Adequate
54	East Carroll Parish	63.0	93.4	Unacceptable
56	Franklin Parish	59.9	80.1	Unacceptable
27	Jackson Parish	75.6	55.9	Exceptional
22	Lincoln Parish	78.5	59.5	Exceptional
58	Madison Parish	56.9	83.8	Unacceptable
29	Morehouse Parish	75.1	75.6	Adequate
9	Ouachita Parish	86.8	47.4	Marginal
47	Richland Parish	68.9	74.4	Marginal
45	Tensas Parish	69.3	86.4	Unacceptable
52	Union Parish	65.0	68.6	Marginal
3	West Carroll Parish	91.6	73.5	Adequate
	State of Louisiana	75.4	61.2	Marginal

*District and Group Performance Score (DPS, GPS) Labels and Ranges

140.0 or more	<i>Five Stars</i>
120.0 - 139.9	<i>Four Stars</i>
100.0 - 119.9	<i>Three Stars</i>
80.0 - 99.9	<i>Two Stars</i>
60.0 - 79.9	<i>One Star</i>
Below 60.0	<i>(Academically) Unacceptable</i>

Source: Louisiana Department of Education

Quality of Life (continued)

Arts, Entertainment, Museums, and Points of Interest

Attraction	Address	Phone	Type
Arts, Theatres, Convention Centers			
Monroe Civic Center Theater	401 Lea Joiner Expwy, Monroe	318-329-2338	Impresario's Choice, theater, concerts, sporting events
Monroe Symphony Orchestra	P.O Box 4353, Monroe	318-435-0029	Classical music, pops concerts
Princess Theatre	714 Prairie St., Winnsboro	318-435-6299	Performing arts
Rose Theatre	102 E. Jefferson Ave., Bastrop	318-283-0120	Performing arts
ThreatreWorks.ULM	700 University Ave, Monroe	318-342-1382	Performing arts
Twin City Ballet Company	2905 DeSoto St, Monroe	318-388-3011	Performing arts, dance
ULM Concert Series	701 University Ave, Monroe	318-342-3811	Call for information
Strauss Theatre/Youngstage	1300 Lamy Lane, Monroe	318-323-6681	Performing arts
West Monroe Convention Center	901 Ridge Ave., W. Monroe	318-396-5000	Meeting facilities, concerts
Northeast LA Arts Council	2305 N 7th St., W. Monroe	318-396-9520	Umbrella for more than 50 arts groups in 11 parishes
Golf Courses			
Calvert Crossing Golf Club	515 Hodge Watson Rd, W Monroe	318-397-0064	
Chennault Golf Course	Millhaven Road, Monroe	318-329-2454	18 holes; driving range
Frenchman's Bend	1484 Frenchman's Bend Rd, Monroe	318-387-2363	18 holes; driving range
Municipal/Forsythe Golf Course	2500 Sycamore, Monroe	318-329-2457	9 holes; practice green - chipping area
Trenton St Golf Course & Driving Range	2411 Trenton St, W Monroe	318-361-9345	9 holes; lighted driving range
Museums			
African American Museum	503 Plum St, Monroe	318-323-1167	Local history/culture
Aviation Historical Museum of Louisiana	701 Kansas Ln, Monroe	318-361-9020	History displays: Delta Airlines, Selman Filed, General Chennault, Flying Tigers, and war memorabilia
Biedenharn Museum & Gardens	2006 Riverside Dr, Monroe	318-387-5281	Bible history & gardens
Masur Museum	1400 S Grand St, Monroe	318-329-2237	Fine art

Northeast Louisiana Children's Museum	323 Walnut St, Monroe	318-361-9611	"Hands-on" education center
Ouachita Valley Heritage Museum	309 McClendon Ave, W Monroe	318-322-5720	
Shepis Museum	107 Main St, Columbia	318-649-9931	Culture/heritage of Caldwell Parish
ULM Natural History Museum	ULM main campus	318-342-1868	Natural history -- fossils and artifacts
Strauss Senior Center	2407 Ferrand St., Monroe	318-387-0535	Services, events, activities for senior citizens
National Wildlife Refuges	Local Office, Farmerville	318-726-4222	U.S. Fish and Wildlife Service
Black Bayou Lake National Wildlife Refuge	Richland Place Rd., Monroe	318-387-1114	1800-acre cypress lake, hiking, canoeing, arboretum, herpetology exhibit, observation pier/deck/blinds, hunting, fishing, boat launch
D'Arbonne National Wildlife Refuge	10 miles north of W. Monroe	318-726-4222	Hunting, fishing, boat launch, trails
Handy Brake National Wildlife Refuge	Cooper Lake Rd, Bastrop	318-726-4400	Wildlife Observation/photography from Observation Platform
Tensas National Wildlife Refuge	2312 Quebec Rd, Tallulah	318-574-2664	Visitor's center, boardwalk
Upper Ouachita National Wildlife Refuge	11372 Hwy 143, Farmerville	318-726-4222	Hunting, fishing, hiking
State and Local Parks			
Chemin a Haut State Park	14656 State Park Rd, Bastrop	318-283-0812	Camping, cabins, hiking
Cheniere Lake Park	104 Cheniere Lake Rd, W Monroe	318-325-8327	Picnic areas, boat launches, fishing
Claire Chennault Park	8475 Millhaven Rd, Monroe	318-329-3267	Golf, tennis, frisbee golf, picnic areas, softball field
Forsythe Park	2300 Sycamore St, Monroe	318-329-4100	Picnic area, 9-hole golf course, tennis and volleyball courts, softball and soccer fields, children's park and public boat launch
Kiroli Park	820 Kiroli Rd, W Monroe	318-396-4016	Playgrounds, trails, fishing, gardens, picnic areas
Louisiana Purchase Gardens & Zoo	1405 Bernstein Park Dr, Monroe	318-329-2400	500 animal species, 700 plants
Poverty Point State Park	6859 Hwy 577, Pioneer	318-926-5492	Historic, 5000-year-old Indian mounds/archaeological site

Quality of Life (continued)

General and Specialty Hospitals and Facilities -- Ouachita, Lincoln, Morehouse Parishes			
Facility	Address	Phone Number	# of beds
Brentwood Hospital	1900 Lamy Ln, Monroe	318-325-0897	130
Cornerstone Hospital of West Monroe	6198 Cypress St, W Monroe	318-397-6360	40
Glenwood Behavioral Health Unit	6200 Cypress St, W. Monroe	318-329-4525	n/a
Glenwood Regional Medical Center	503 McMillan Rd, W Monroe	318-329-4200	240
Green Clinic (and Surgical Hospital)	1200 S. Farmerville St, Ruston	318-255-3690	10
LSU Health Sciences Center	4864 Jackson St, Monroe	318-330-7000	247
LA Center for the Blind	101 S. Trenton St, Ruston	318-251-2891	n/a
Monroe MRI Center	501 Catalpa St, Monroe	318-327-4433	n/a
Monroe Rehab Hospital	4320 S Grand St, Monroe	318-322-5775	20
Monroe Surgical Hospital	2408 Broadmoor Blvd, Monroe	318-410-0002	10
Morehouse General Hospital	323 West Walnut, Bastrop	318-283-3600	60
Northern LA Medical Center	401 E. Vaughn Ave, Ruston	318-254-2100	159
Saint Francis North Monroe Medical Center	3421 Medical Park Dr, Monroe	318-388-1946	225
Ouachita Surgical Hospital	1275 Glenwood Dr, W Monroe	318-322-1339	10
Premier Rehabilitation	4310 S Grand St, Monroe	318-812-1000	20
P&S Surgical Hospital	312 Grammont St, Ste 101, Monroe	318--388-4040	10
St Francis Medical Center	309 Jackson St, Monroe	318-327-4000	237
St Francis Specialty Hospital	309 Jackson St, Monroe	318-327-4600	50
St Patrick's Psychiatric Hospital	309 Jackson St, Monroe	318-327-4686	28
West Monroe Urgent Care	1416 Natchitoches St, Monroe	318-998-4878	NA

Source: Northeast Louisiana Yellow Pages May 2007.



Printing underwritten by the Monroe Chamber of Commerce through a grant from Louisiana Economic Development.



**PRODUCED BY THE ULM COLLEGE OF
BUSINESS ADMINISTRATION
CENTER FOR BUSINESS AND ECONOMIC
RESEARCH**

College of Business Administration
University of Louisiana at Monroe
700 University Avenue
Monroe, LA 71209

**(318)-342-1151
Email: EISENSTADT@ULM.EDU**

***Prepared by Robert C. Eisenstadt, PhD
Department of Economics
Director, Center for Business and
Economic Research
College of Business Administration***

This document was designed and produced by Ann Bloxom Smith, Director, ULM Center for Student Internships. Research assistance for this document was provided by Ms. Nona L. Broxson, MBA, ULM, and Ms. Laura Uyeda, BBA, ULM.



The College of Business Administration at ULM is pleased to be able to partner with the business community of Northeast Louisiana to provide this second annual compendium of regional demographic and economic data.

Last year, we redefined the mission of our Center for Business and Economic Research (CBER) to become the provider of independent, reliable, and valuable information for use by economic development entities in our region. The Factbook is a direct output of that change in mission. Our plan is to publish an updated version each year, with intra-year updates available through the online edition at cba.ulm.edu/cba/factbook.

We look forward to continuing our role as a partner in economic and community development in Northeast Louisiana.



**Dr. Ron Berry, Dean
College of Business Administration
University of Louisiana—Monroe**