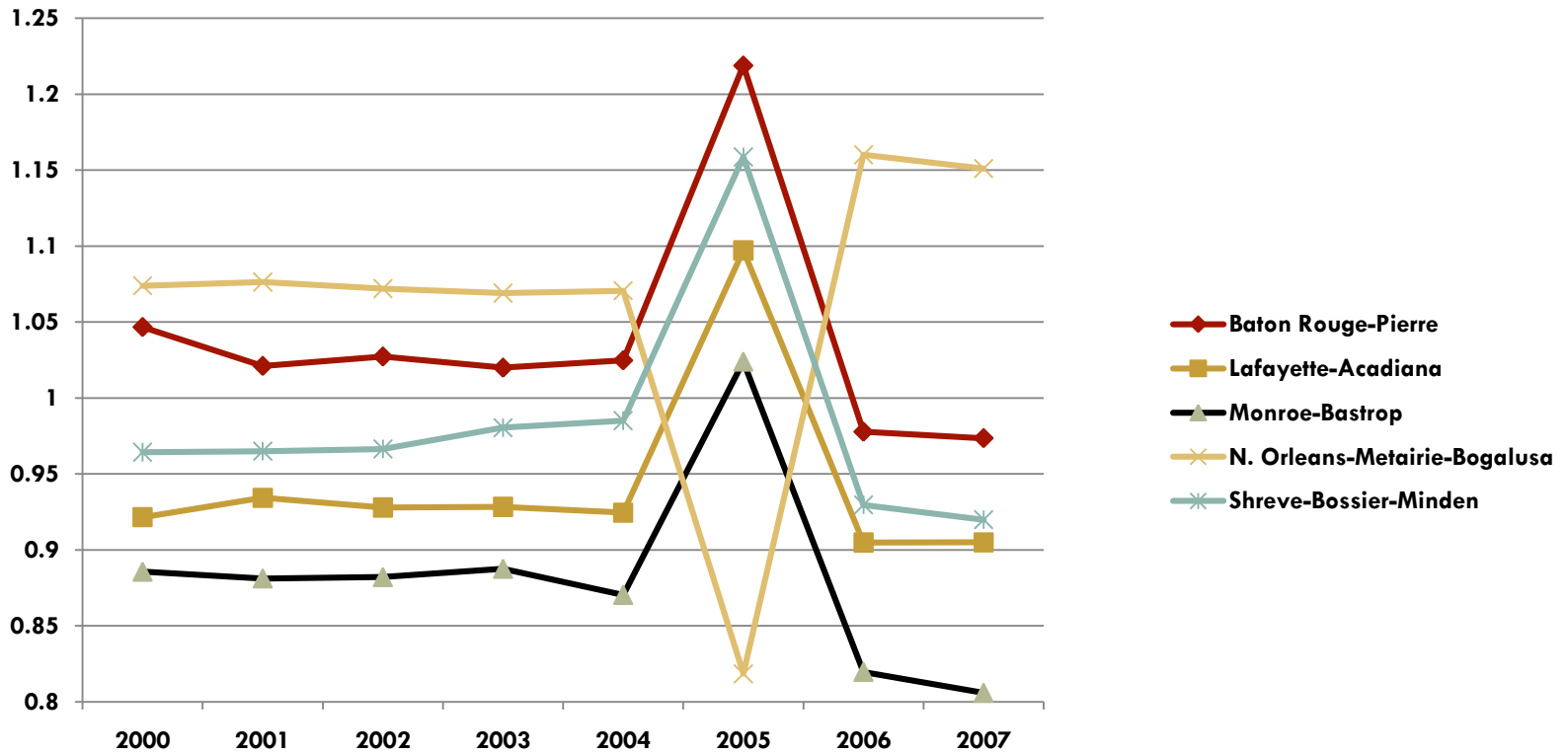


Per Capita PI as % of State Per Capita PI



2010 Business Outlook Summit – Northeast LA

Dr. John Francis (Louisiana Tech University)

Dr. Robert Eisenstadt (University of Louisiana – Monroe)

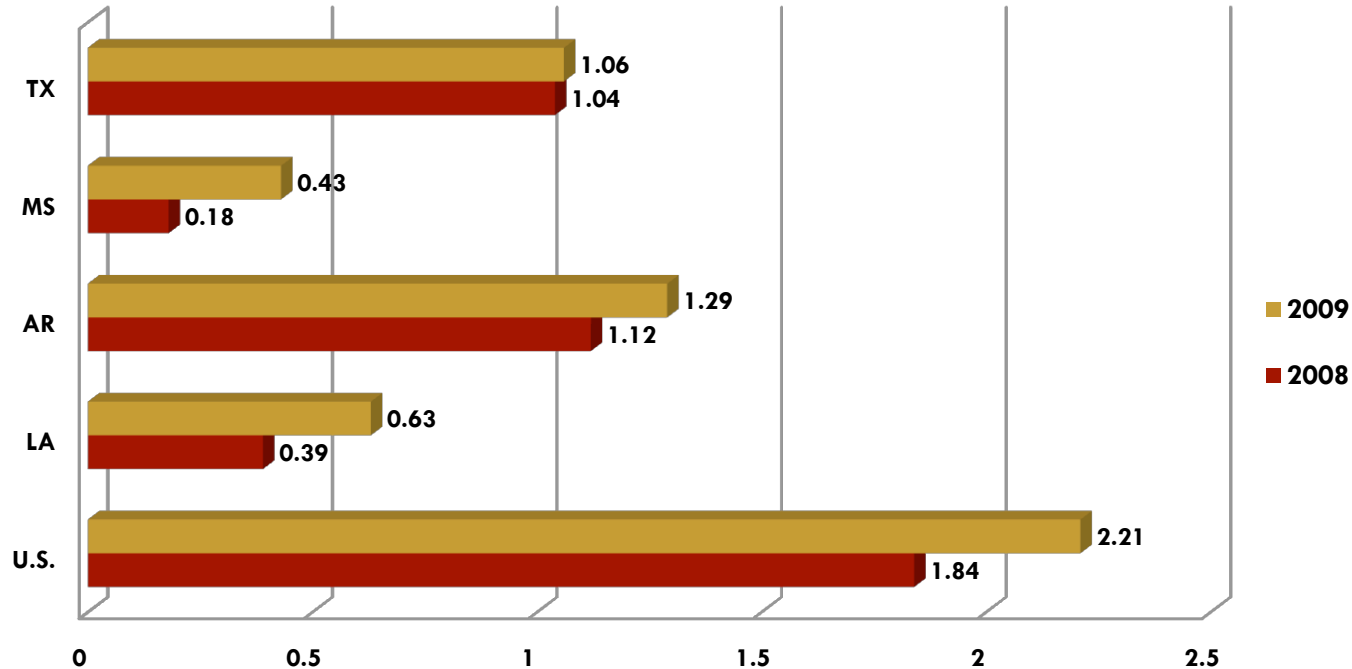
The following presentations will be available
for review on-line at:

cba.ulm.edu/cber

CURRENT INDICATORS



Foreclosure Rate: % of housing units.

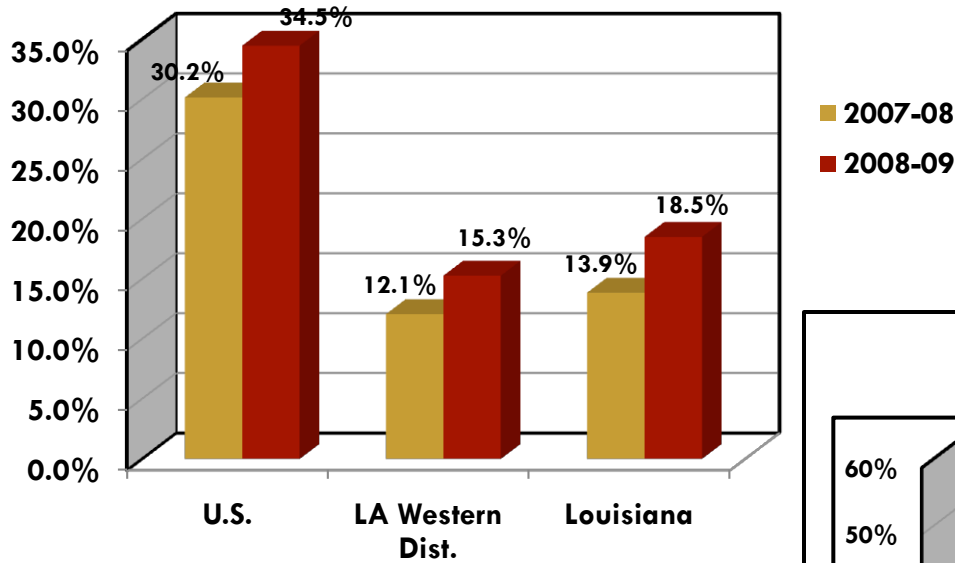


Nevada = 10.17%
Vermont = 0.05%

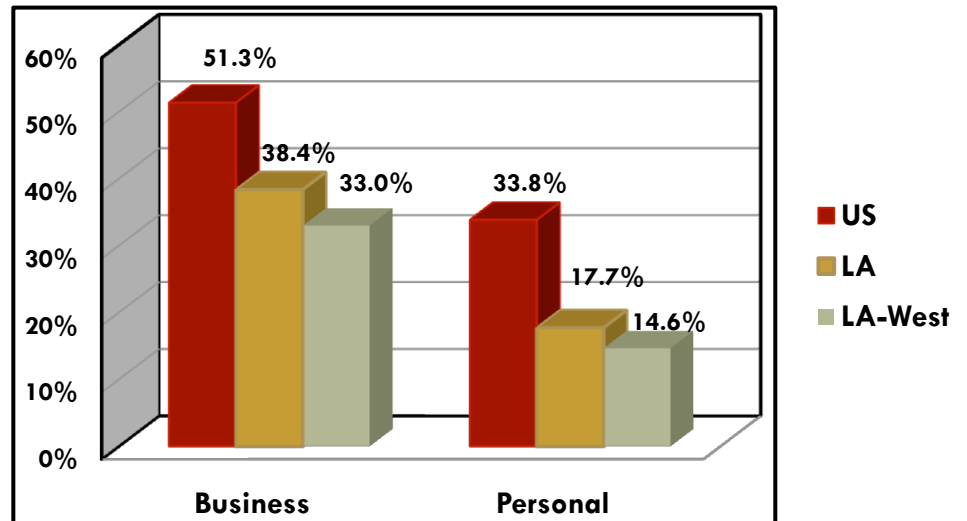
Ouachita Parish Foreclosures					
2004	2005	2006	2007	2008	2009
593	486	601	655	601	650

Business and Personal Bankruptcies: annual % change.

All Bankruptcy Filings

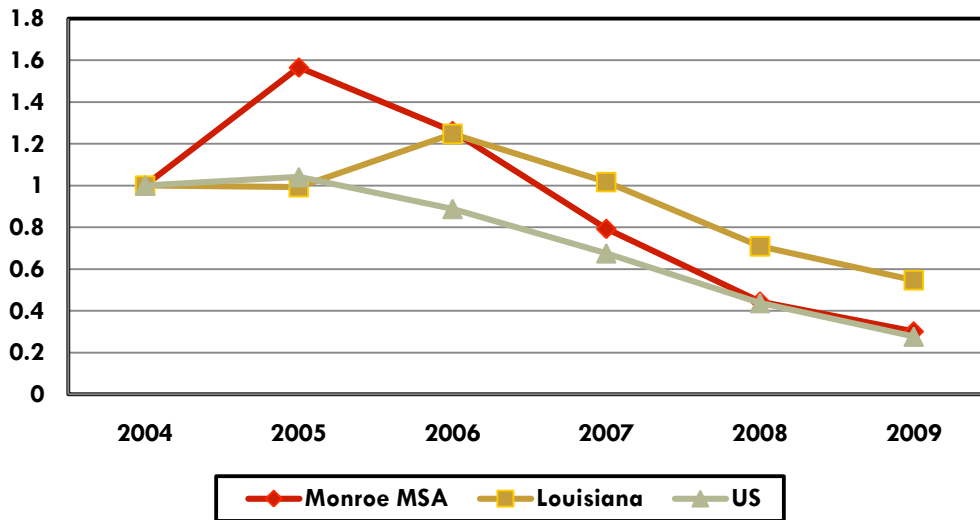


2008-09 % Change



New Residential Building Permits and Valuation

Index of Residential Building Permits



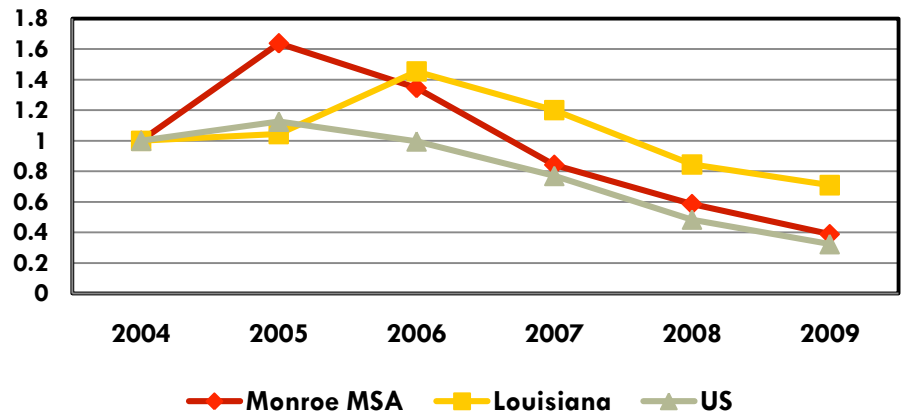
Total Permits Issued

	US	LA	MLU
2007	1,398	23,379	555
2009	572	12,652	211

Total Permit Valuation (\$000)

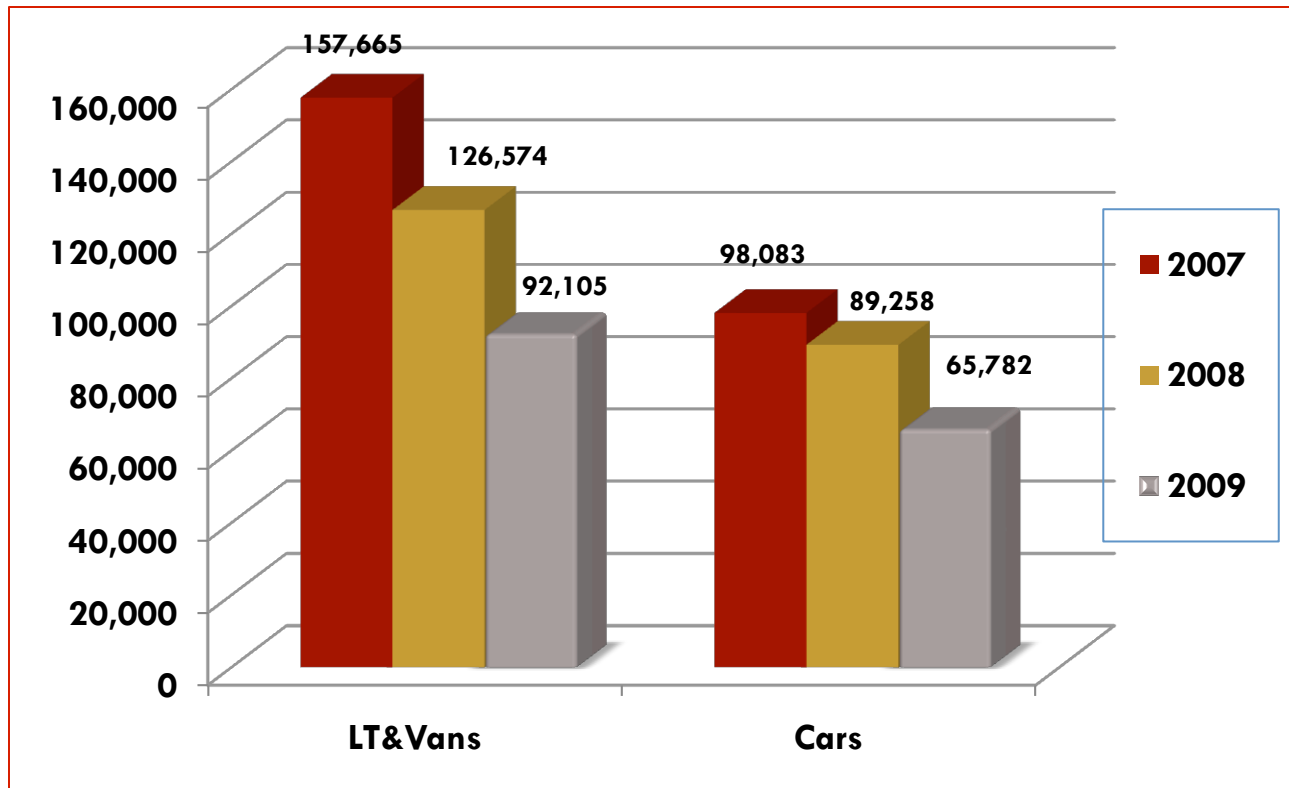
	US	LA	MLU
2007	\$225,236,551	\$3,153,525	\$63,946
2009	\$94,516,000	\$1,863,527	\$34,136

Valuation Index



Louisiana Motor Vehicle Registrations

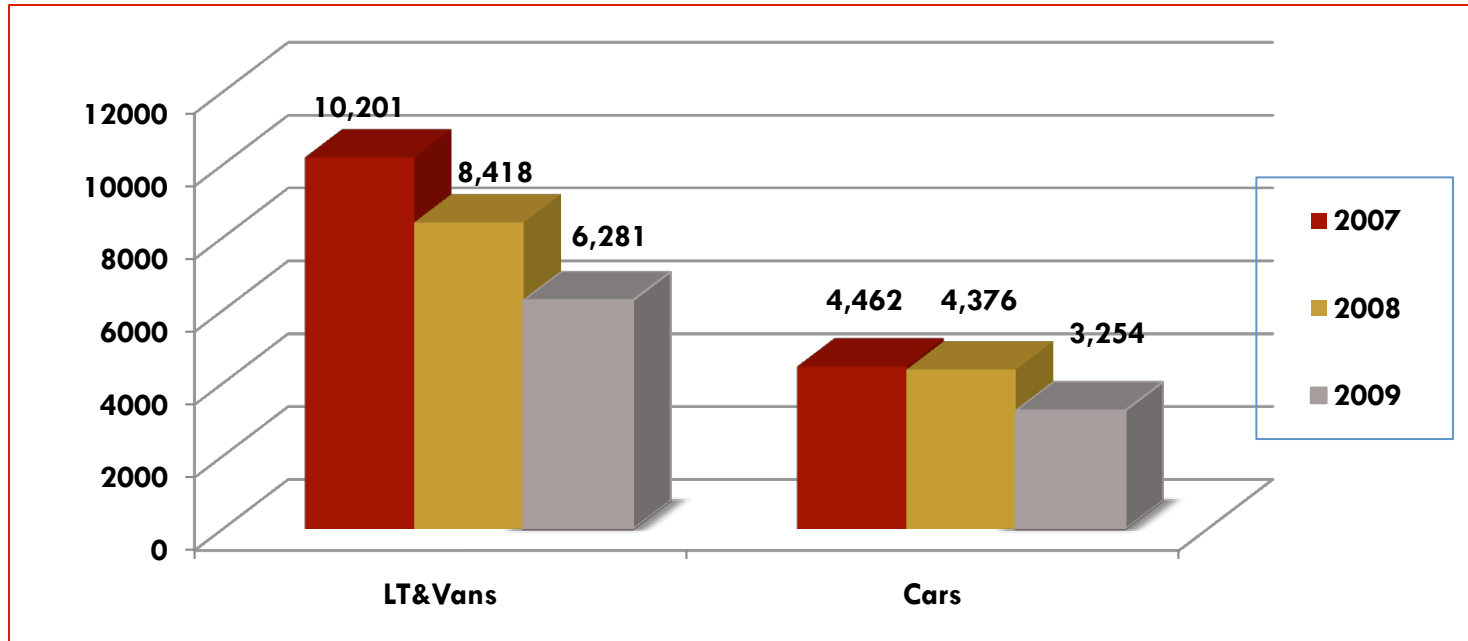
LA New Vehicle Registration



% change 2008-09: LA = -26.8%; US = -21.2%

Northeast Louisiana Motor Vehicle Registrations/Sales

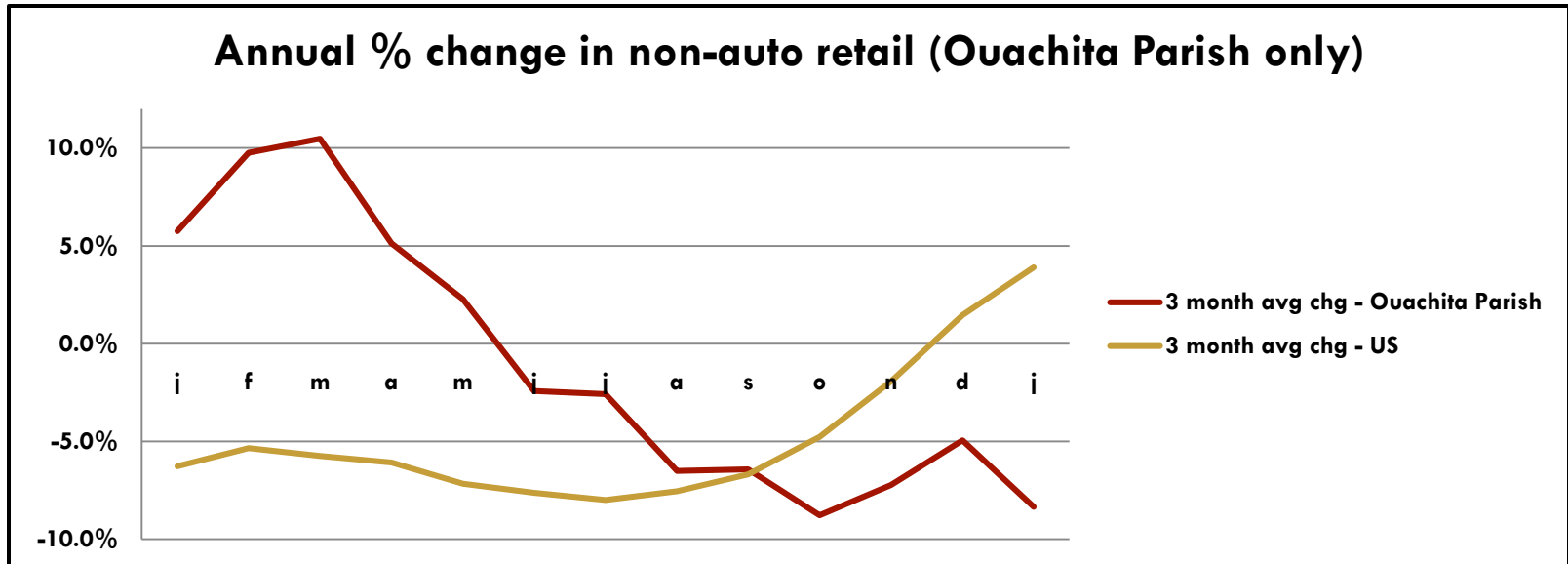
NE Louisiana New Vehicle Registration



	2007	2008	2009
NELA Dealer Sample	11,547	9,683	6,342
Annual change	n/a	-16.14%	-34.50%

Non-automotive Retail Sales: 2008-2009

Year-over-year 3-month average % change



2008	%chg Annual	% chg Seasonal
United States	2.4%	-6.2%
Ouachita Parish	2.8%	1.3%
2009	%chg Annual	% chg Seasonal
United States	-4.8%	3.5%
Ouachita Parish	-1.2%	-3.0%

Unemployment Claims

Continuing Claims for Unemployment Insurance

	Jan-10	Jan-09	% change
Louisiana	236,502	138,301	71.0%
USA	5.69 million	5.78 million	-1.6%

Duration of Claims (weeks)

	Jan-10	Jan-09
Louisiana	19.7	11.4
USA	19.8	14.6

Unemployment rate

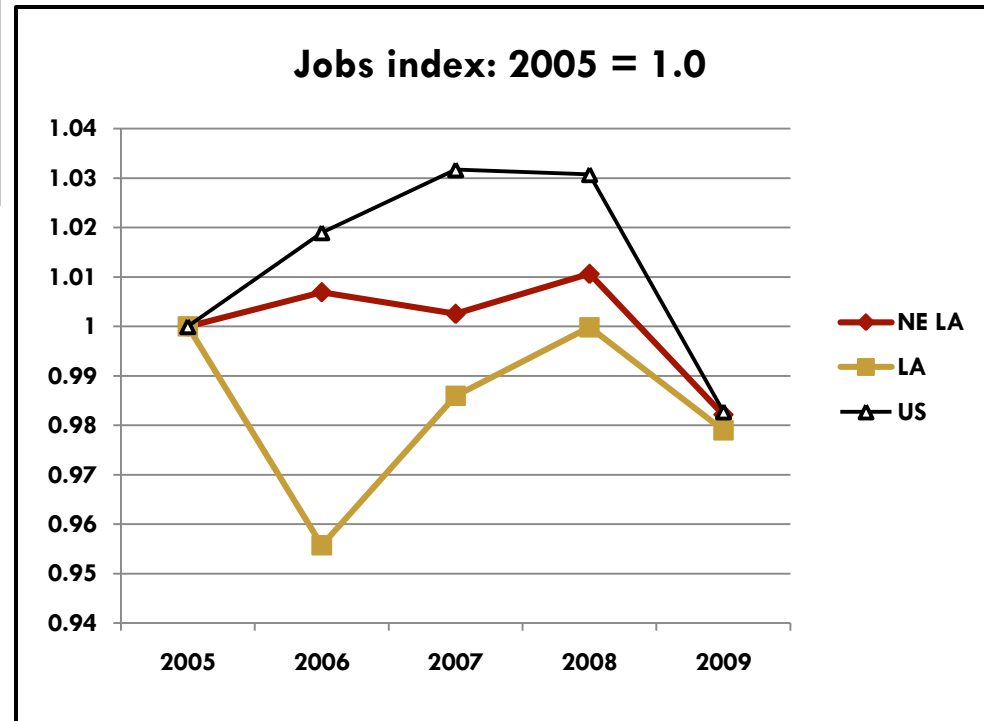
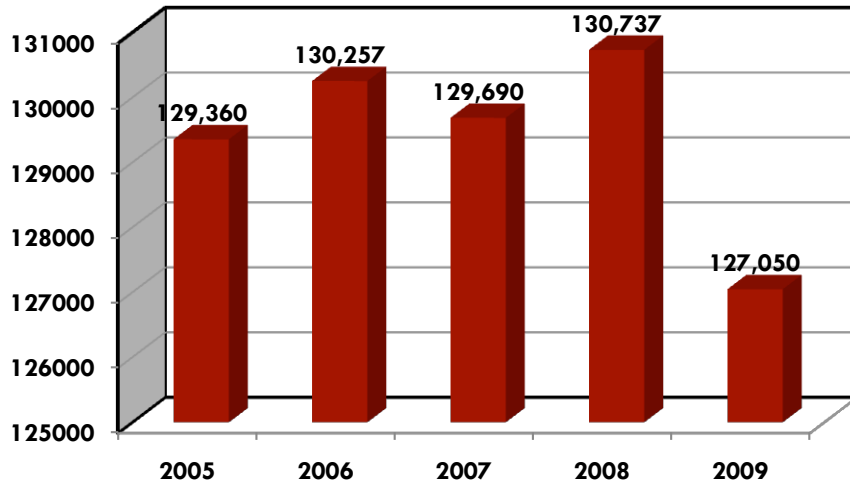
Unemployment Rates (Not Seasonally Adjusted)

	January-10	January-09
United States	10.6	8.5
Louisiana	8.2	6.1
Monroe MSA	8.7	6.4
NE Louisiana	12.4	9.4
Shreveport MSA	7.7	7.6

2005-2009 (2ND QTR) EMPLOYMENT
IN NELA, LA, US

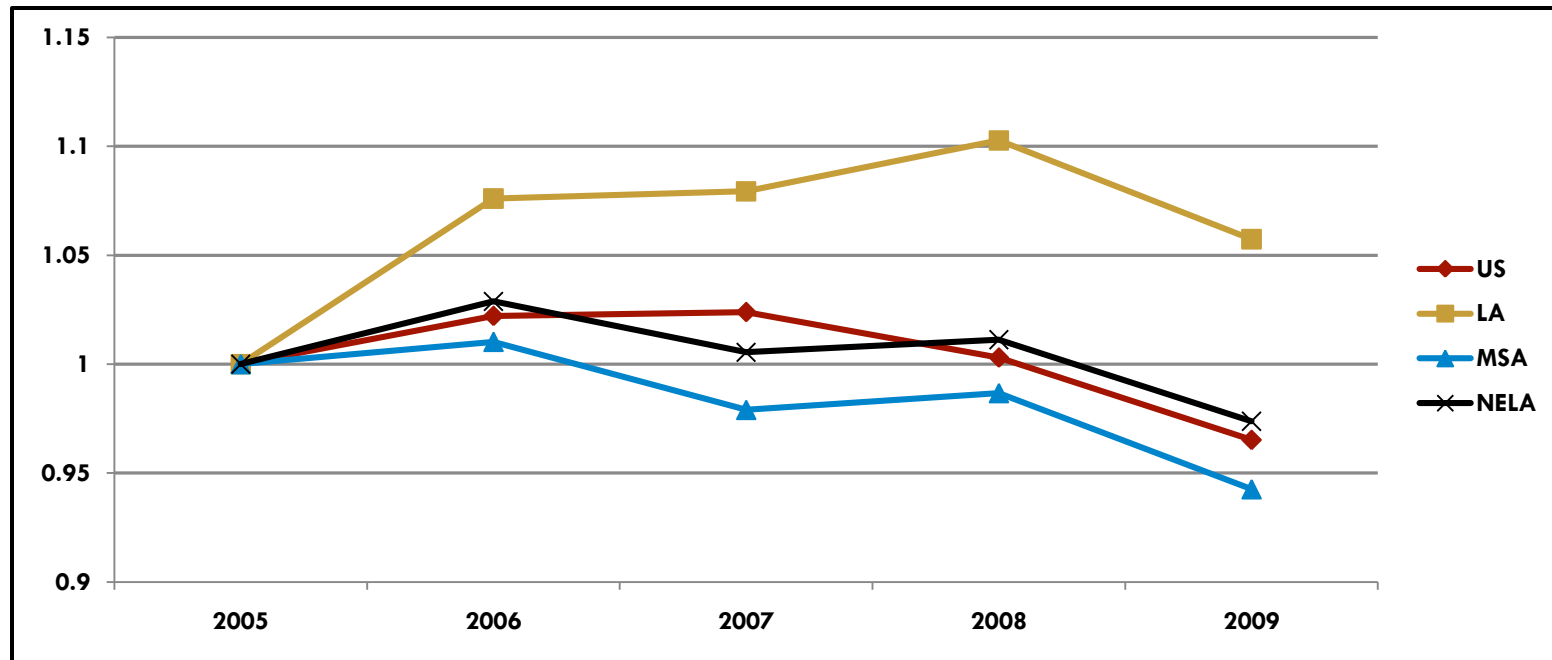
Total Covered Employment (Jobs)

Northeast Louisiana Jobs



Figures as of 2nd qtr 2009: LA Dept of Labor; USBLS.

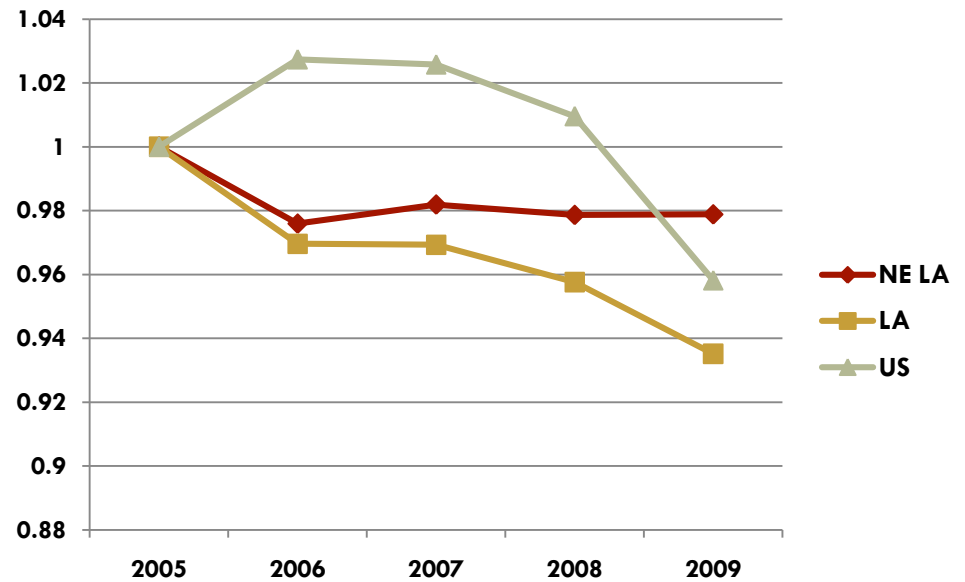
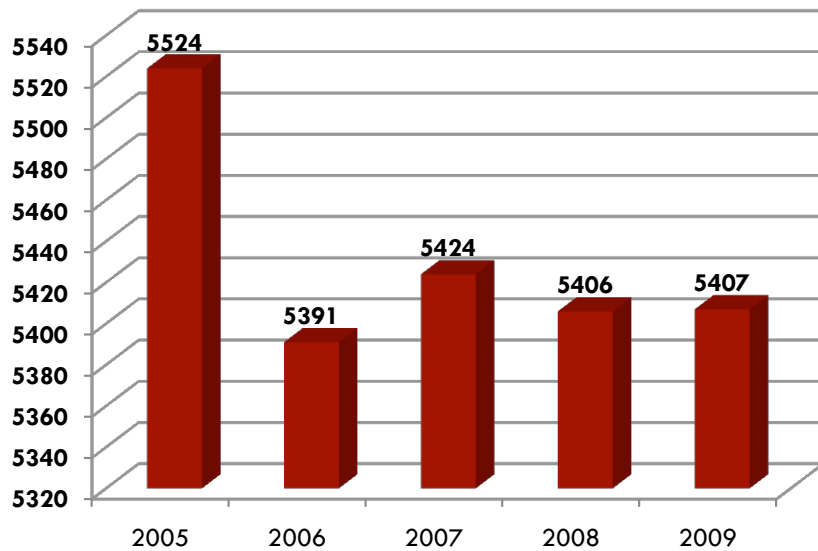
Total Employment: Household Survey



	2009 Employment	Change from 2008
United States	137,953,000	-5,397,000
Louisiana	1,889,596	-81,019
Monroe MSA	73,925	-3,461
NE Louisiana	139,334	-5,360

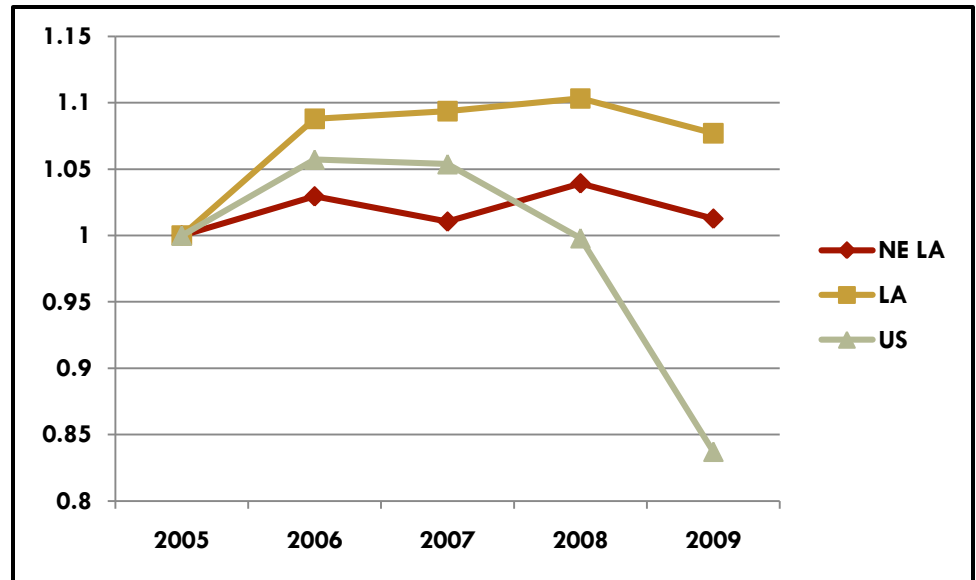
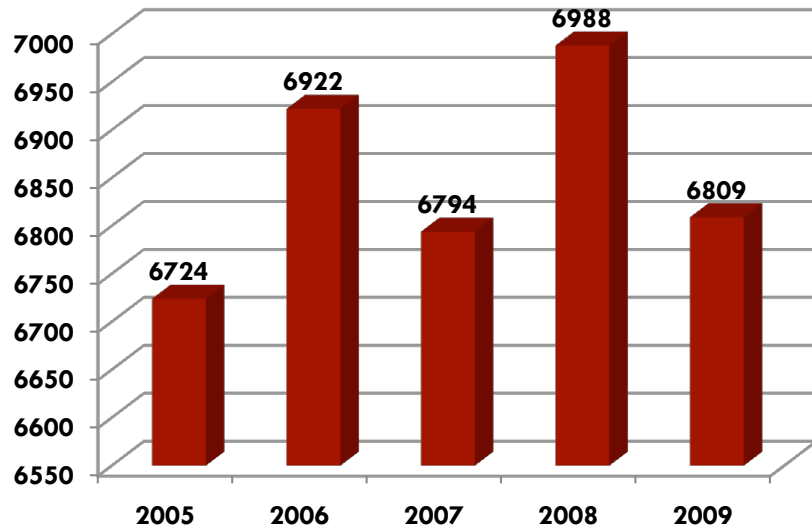
Finance and insurance

NE Louisiana



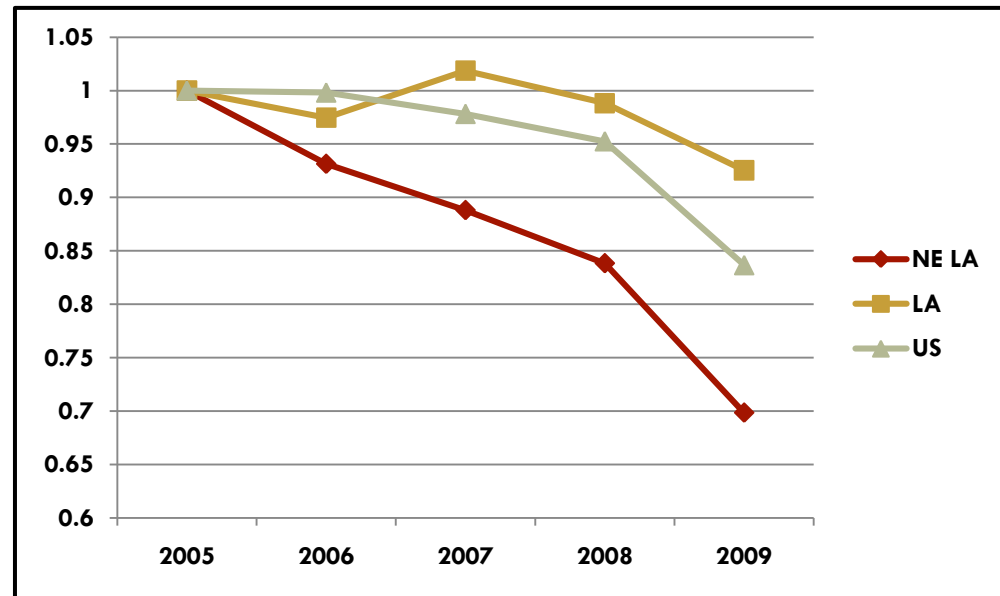
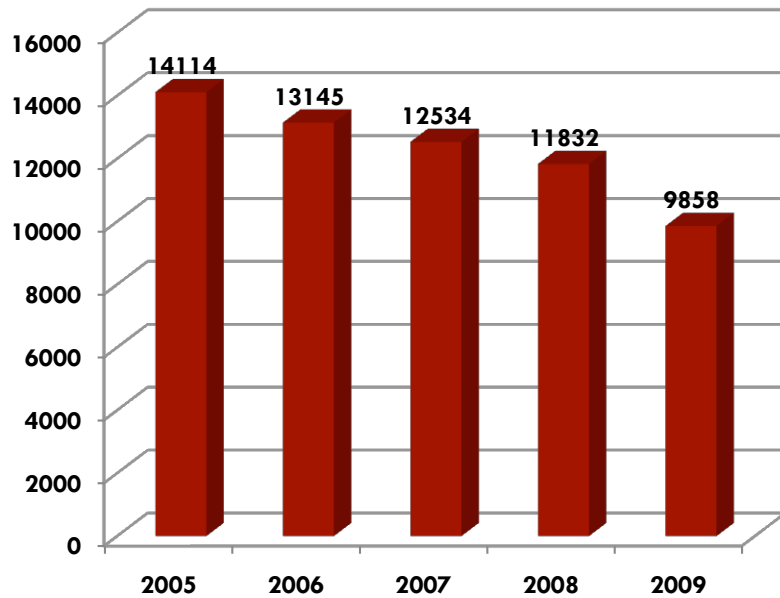
Construction

NE LA



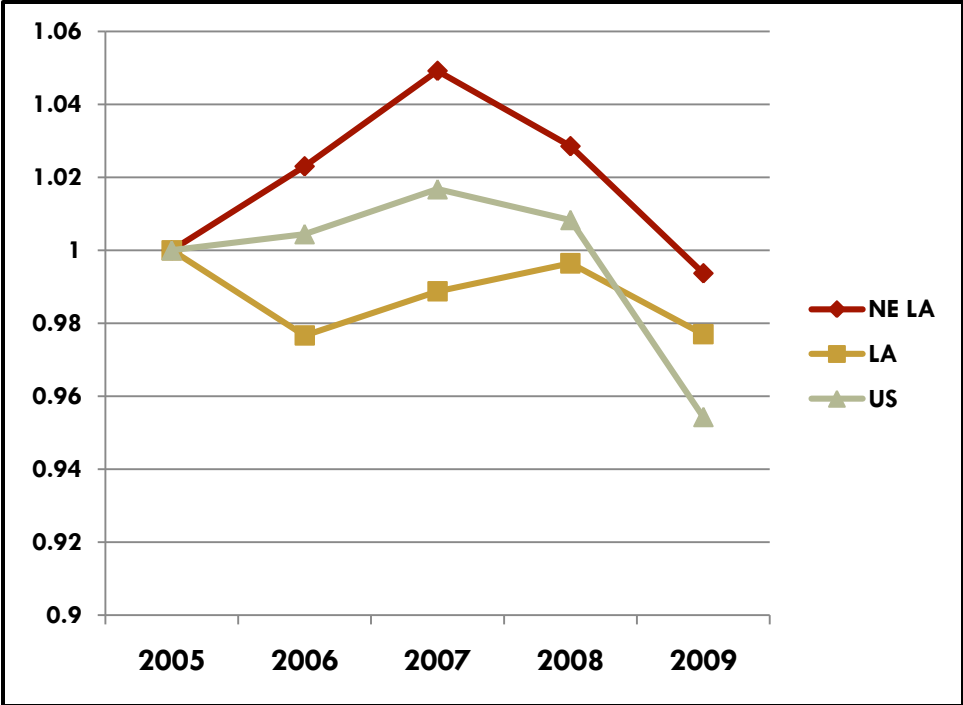
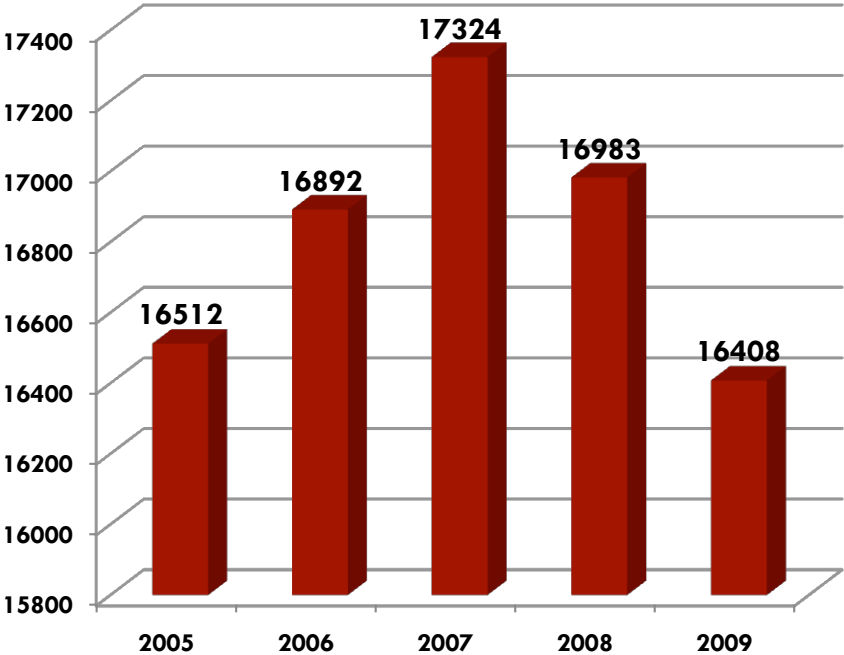
Manufacturing

NE LA

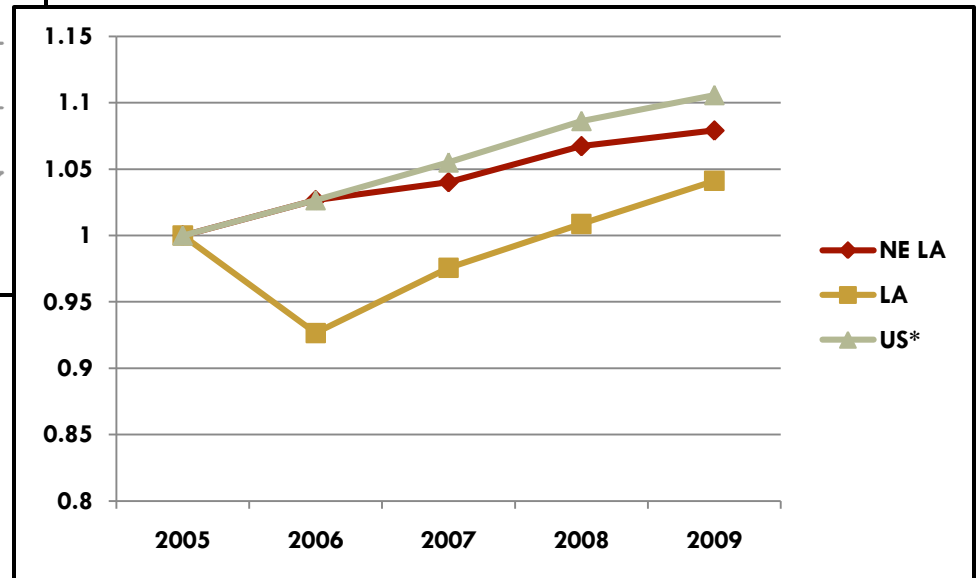
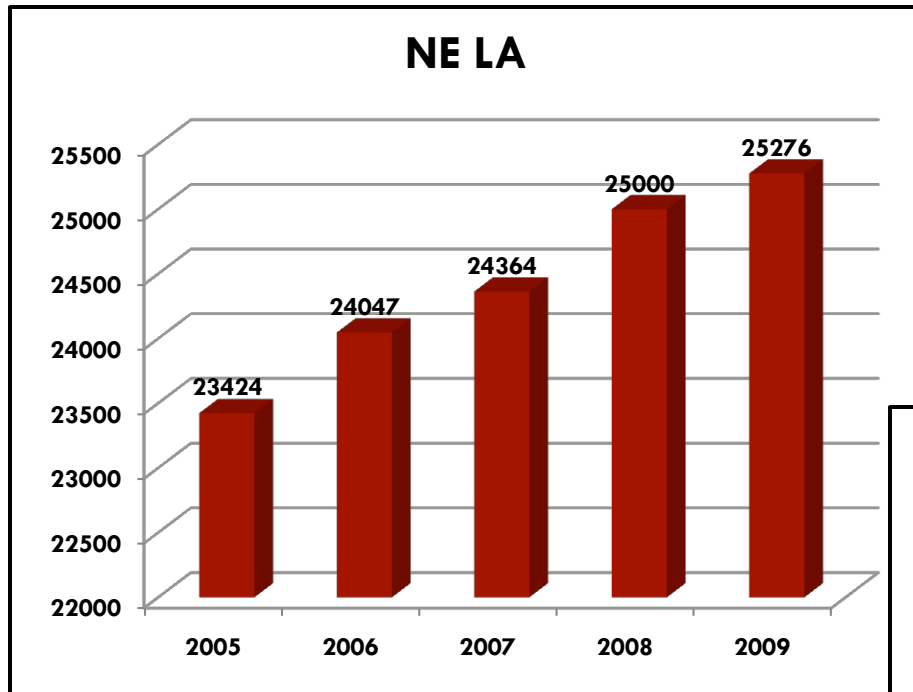


Retail Trade

NE LA



Health Care & Social Assistance

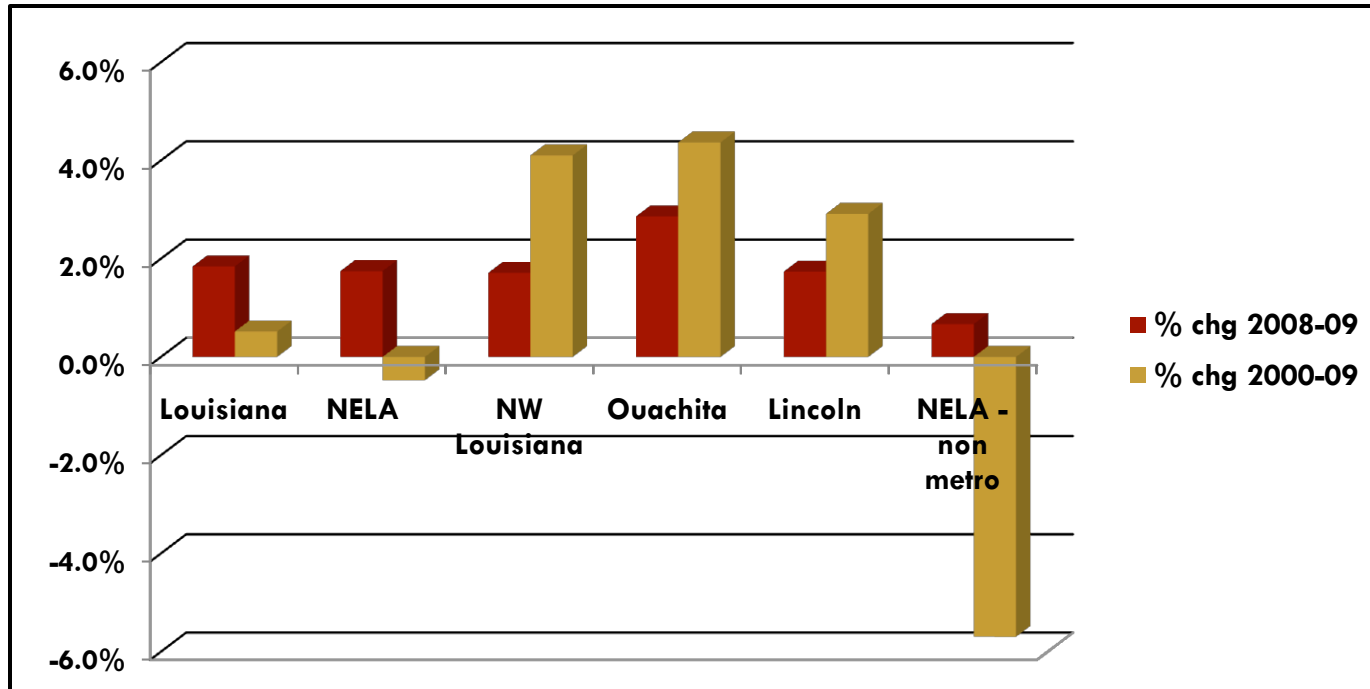


*US data contains both education and health care

THE HOUSING MARKET



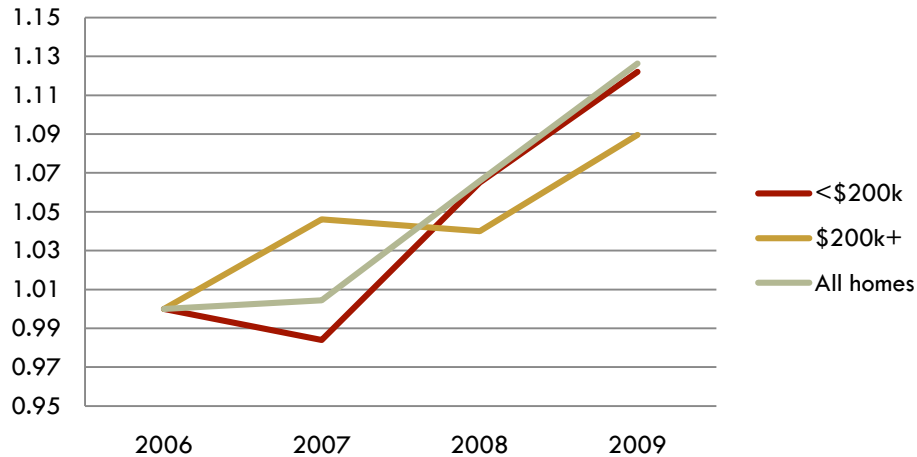
Population



	2009	Gain f/2008
Louisiana	4,492,076	81,280
NELA	352,185	6,049
NWLA	544,002	9,153

NELA Existing Homes Sold: 2005-2009

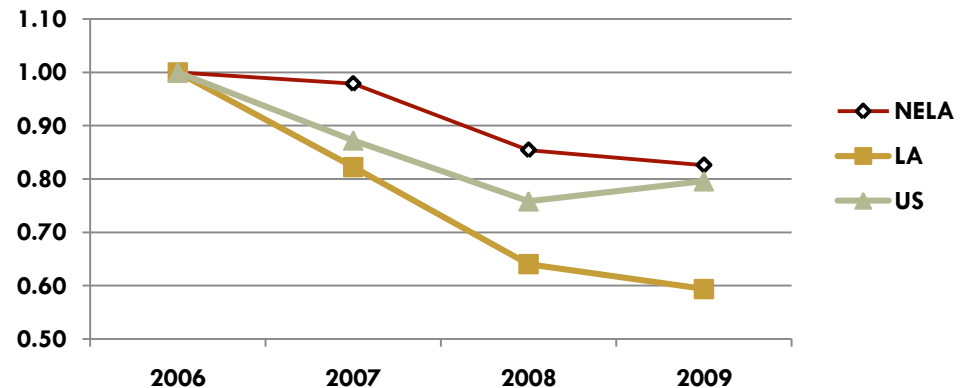
Days on Market Index: 2006=1.00



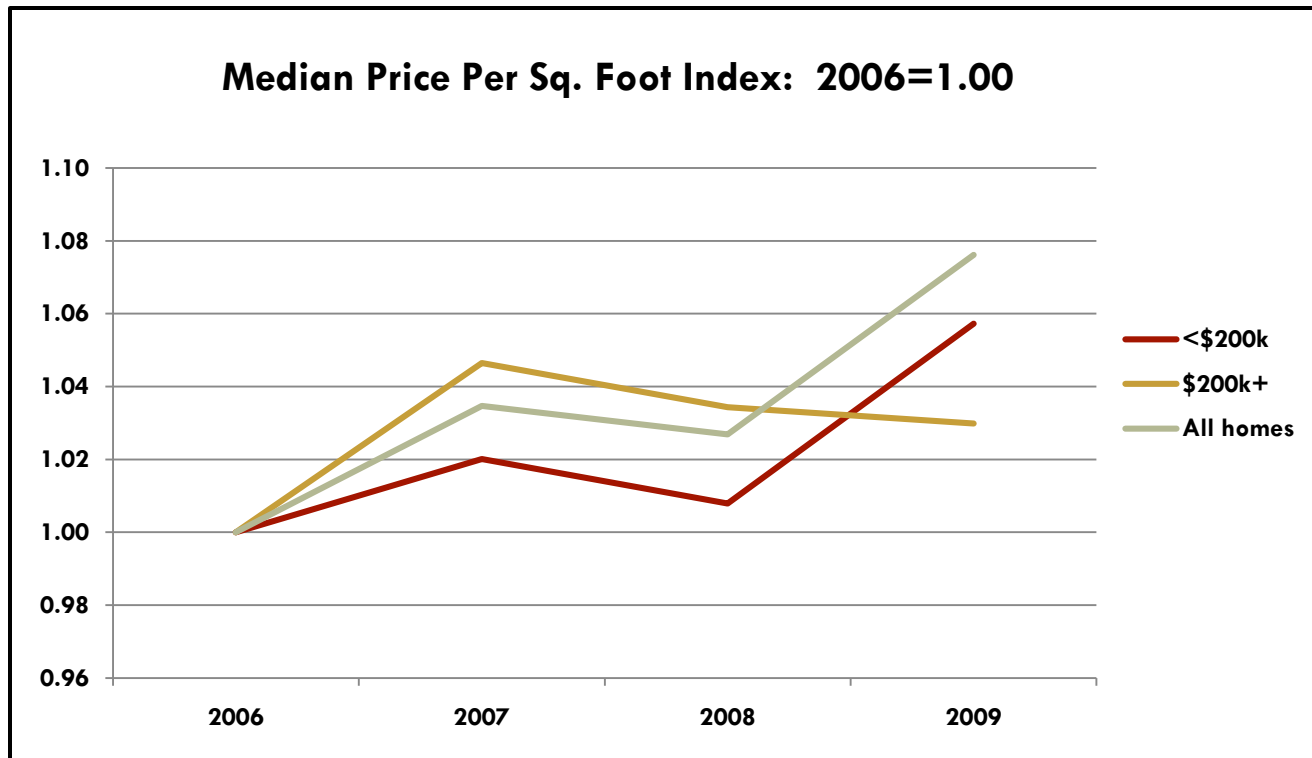
	<\$200k	\$200k+	All homes
2009 DoM	121	151	128

	2006	2007	2008	2009
listed	3,110	3,130	2,972	2,712
sold	1,846	1,807	1,577	1,525

Existing home sales index: 2006=1.00

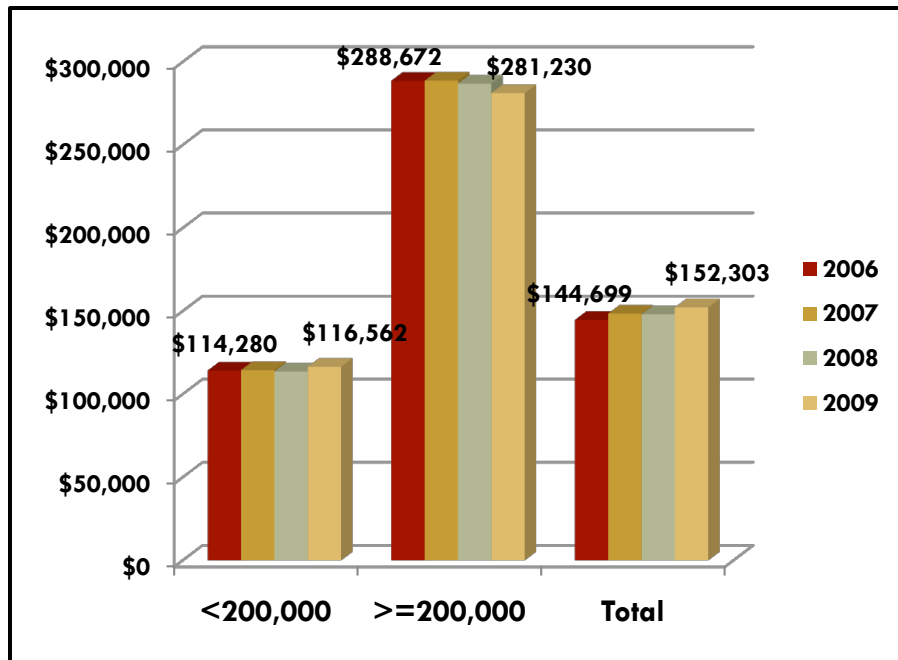


Existing Homes: Price per heated square foot (median)

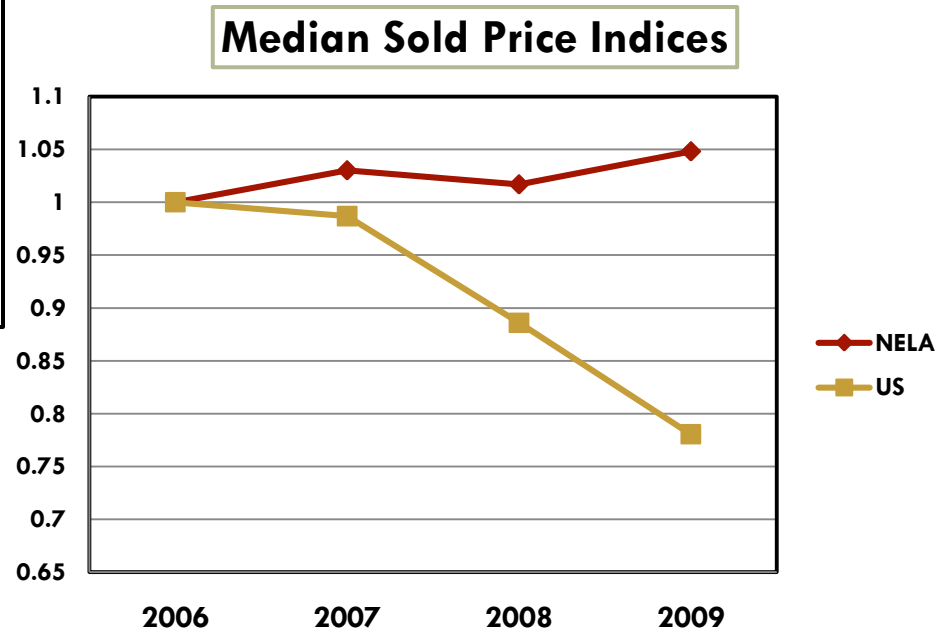


	<\$200k	\$200k+	All homes
2009 Price	\$72.27	\$103.00	\$78.64

NELA Home Sales – Mean (Median) Sold Price



Mean Sold Price: NELA



LOOKING AHEAD IN NORTHEAST LOUISIANA

Selected Sources of Growth for Monroe/NELA: 2011-2015

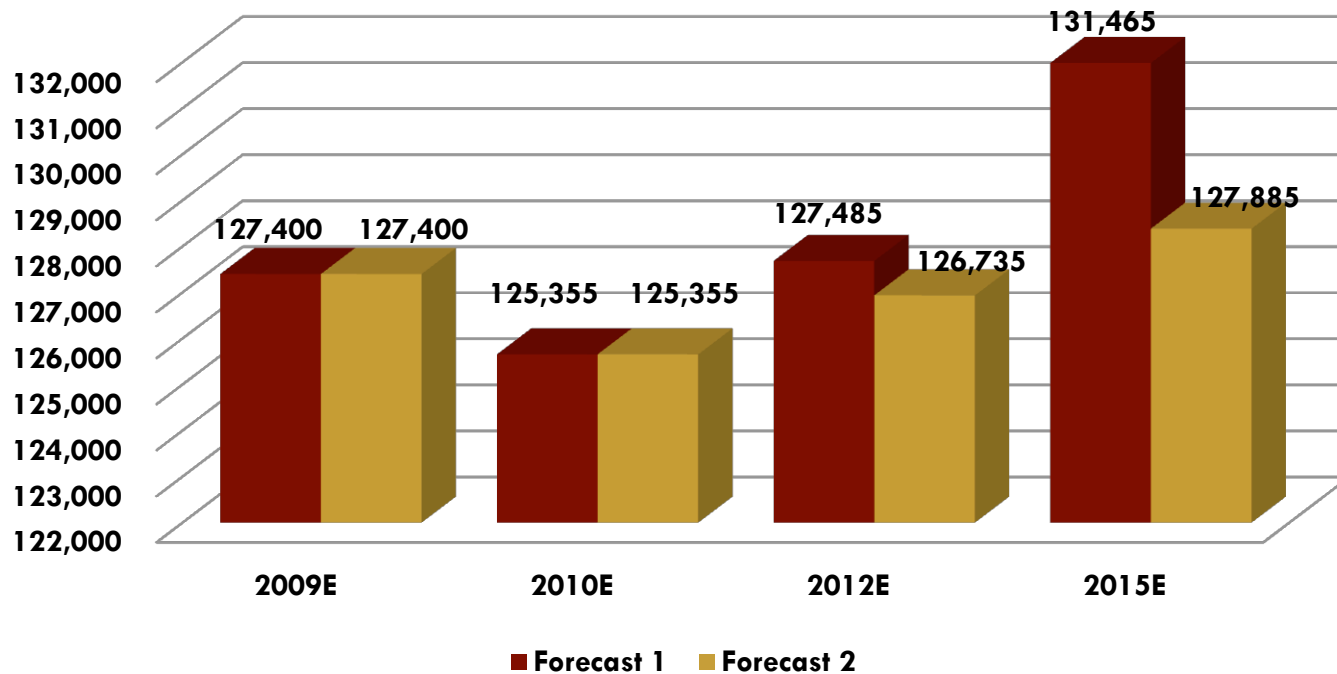
Estimated direct effects at peak operations

Estimated indirect effects using BEA RIMS II Multipliers.

1. **Gardner Denver Thomas**
 - 230 jobs; \$9.2 million
 - 300 jobs; \$7.5 million
2. **ConAgra (sweet potato processing)**
 - 500 jobs; \$15 million
 - 900 jobs; \$25 million
3. **CenturyLink (merger)**
 - 350 jobs; \$16 million
 - 450 jobs; \$14 million
4. **V-Vehicle**
 - 1400 jobs; \$56 million
 - 2200 jobs; \$50 million
5. **(Less Accent Marketing)**
 - (350 jobs; \$7.5 million)
 - (171 jobs; \$5.3 million)

Employment Gains: 2010-2015

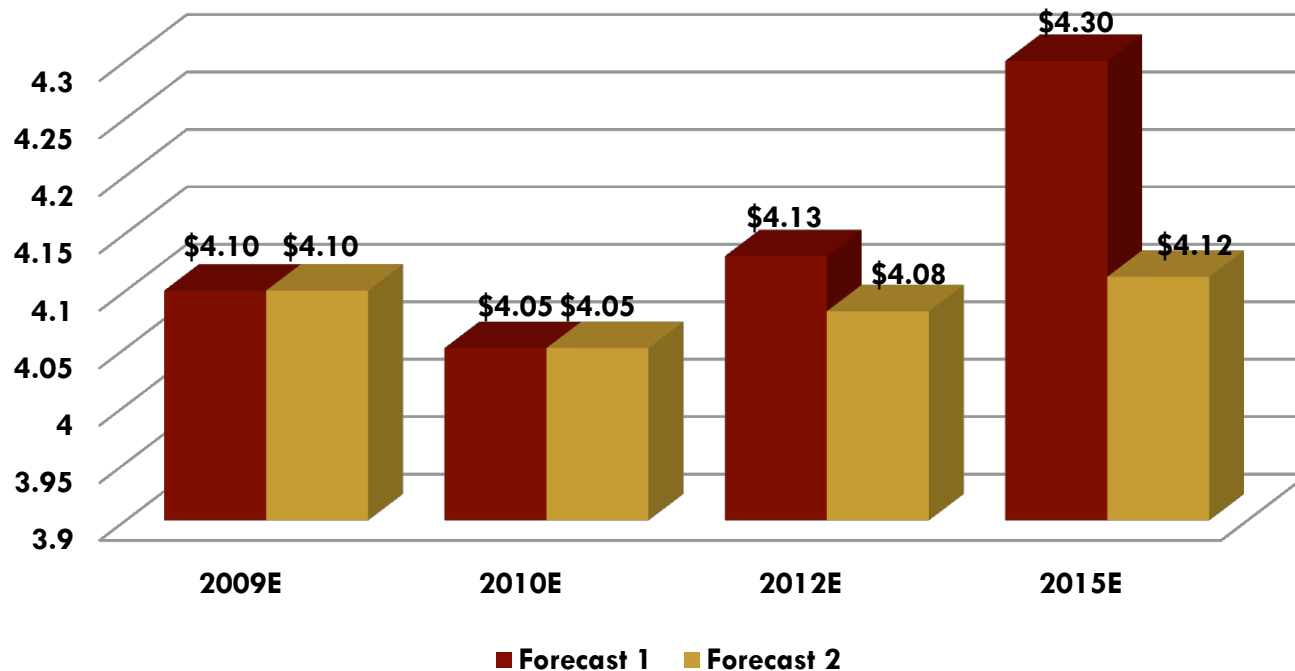
Covered Employment(Jobs)



	Forecast 1	Forecast 2
% change 2010-2012	1.70%	1.10%
% change 2012-2015	3.10%	1.00%

Household Income Gains: 2010-2015

Chart Wages/Salaries (\$Billions)



	Forecast 1	Forecast 2
% change 2010-2012	2.00%	0.70%
% change 2012-2015	4.10%	1.00%

Back to Basics...

In case you don't land the big one:

- **Economic development the old fashioned way**
 - ▣ Pedestrian friendly environment.
 - ▣ Green space
 - ▣ Diversified economy
 - ▣ Quality public school system
 - ▣ Capital (infrastructure) and technology



Next up:

State, National, and Regional Wage Growth

The influence of changes in the capital stock and per-capita spending on health care.