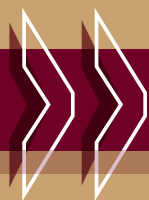


English as a Second Language (ESL)



Newly developed program for people in the field of Education

100% ONLINE Master of Education degree & Add-On Endorsement

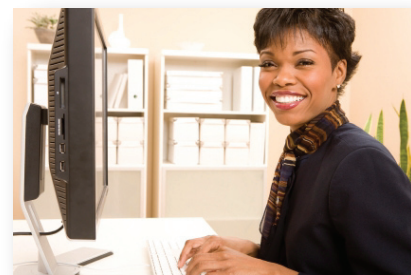
ESL Opportunities

- Earn your certification to assist students transitioning into your English speaking school system
- Position yourself in an elite pool of ESL teachers. ESL teacher demand is rapidly increasing*
- Find job security and opportunities in this field as the increasing number of non-English speaking students continues to grow*
- Spend more one-on-one time with students
- Improve your job prospects beyond the classroom

*Source: www.bls.gov

ESL Certification

- After completing four online classes from ULM, teachers will be eligible to apply for an endorsement for ESL Certification



ULM is continually recognized for its exemplary teacher initiative programs.

ULM

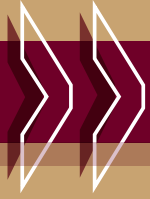
University of Louisiana at Monroe

eteach@ulm.edu
(318) 342-1250

www.ulm.edu/eteach



English as a Second Language (ESL)



Newly developed program for people in the field of Education

100% ONLINE
M.Ed. &
Add-On
Endorsement



The ESL Program

- Complete four classes: Linguistics, Speech Language Pathology, Curriculum Design for the Multicultural Classroom, and Secondary Language Acquisition
- You can later apply these graduate level classes toward a M.Ed. in ESL (100% online)
- You are not required to know or learn a new language
- Gain the skills to assist students whose primary language is not English
- Study the relationship of language acquisition to social and cognitive development
- Learn how to assist students by showing them distinctive sound patterns and grammatical systems of American English
- Develop practical approaches and techniques for teaching ESL
- Learn to adapt curricula for students of all educational levels: elementary, secondary, and adult education
- Serve as a cultural informant for your coworkers and school administrators



ULM

University of Louisiana at Monroe

eteach@ulm.edu
(318) 342-1250

www.ulm.edu/eteach

