

English 101, Spring 2009
Ida Gaines
gaines@ulm.edu
Phone: (318)342-6738

Office: CWSSC
Office Hours: Mon-Thurs: 7:30am-5:00pm
Friday: 7:30am-11:30am
by appointment

Course Prerequisites/Corequisites

A score of 17 or higher on the English Component of the ACT or a passing grade on the English 090 test-out.

Course Description

Composition I (from undergraduate catalog): "Development of skills in expository prose. Includes study of rhetorical patterns and analysis of essays."

English 101 will prepare students for the type of analytical and argumentative writing typically assigned in various college disciplines. This course will emphasize writing as a process that includes analyzing a writing situation, prewriting, drafting and carefully revising. Students will compose and revise a variety of four carefully-revised 1000-1200 word compositions.

Required Materials

1. Lester Faigley's Writing: A Guide for College and Beyond
2. Everyday Writer, 3rd Edition
3. A Guide to First-Year Composition, 1st Edition
4. Access to word processing software, either Microsoft Word or Word Perfect
5. Access to Moodle

Course Objectives and Outcomes

By the end of the semester, students will meet the following measurable objectives:

Organization and structure

- Sentences maintain focus and support paragraph topics
- Paragraphs support independent thoughts
- Document is composed of logically-sequenced paragraphs, engaging introduction, supportive body, and conclusion that effectively ends the composition
- Transitions clearly guide readers between sentences and paragraphs

Content

- Position/thesis is clear and adequately developed
- Tone is appropriate for the writing situation and the document (personal, public, professional, academic)
- Voice and style are appropriate for the writing situation and the document (independent voice, varied sentence structure, engaged with topic)
- Mechanics—spelling, punctuation, and formatting are correct

Course Topics

- Intermediate composition skills
- Research methods—finding and evaluating sources; quoting, summarizing, and paraphrasing sources; citing and documenting various kinds of sources in MLA style.
- Analysis and argument—analyzing and arguing about popular culture, social and cultural issues, and literary texts.

Instructional Methods and Activities

During this course, I may use many different teaching strategies and tools, which include collaborative and individual activities, reading; audiovisual aides, such as chalkboard, Blackboard, computer and handouts; discussion; lecture; formal and informal writing.

Paper Format

All out-of-class assignments should be typed, double-spaced, with a 1” margin all the way around. Title pages, binders and folders are not necessary. Headings should be placed on page one of the essay. The heading format for essays will be MLA style, shown as follows:

Your Name
 Ms. Pate
 Course Title and Number (i.e. English 101)
 Date (i.e. 20 August 2007)

Assignment Overview and Grades

1. Writing/Pre-writing exercises	15%
2. Grammar Exercises and Peer Review Participation	15%
3. Major Essay 1	15%
4. Major Essay 2	15%
5. Major Essay 3	20%
6. Major Essay 4	20%

All grades are on a 10-point scale:

A = 90-100 B = 80-89 C = 70-79 D = 60-69 F = 50

Note: Students who receive a grade lower than C for the course must retake the course.

Essays

You will be expected to revise each essay at least once. All essays will have a first and final deadline, which means that after that date, I will no longer accept revised essays. *I won't accept any final work that I have not seen beforehand in draft form; in other words, if I have not seen your prewriting, draft, and revision process, you may not submit the final paper.*

Essays will be accompanied by a grading matrix. The grading matrix will clearly list the criteria, along with the total points each criterion is worth. Turn in **ALL** of your drafts in order to receive

credit for your work. Please be sure to place the final, typed draft on top. Staple all other drafts—handwritten or typed—to the final draft. **On top of all the drafts**, staple the grading matrix.

Attendance Policy

Students will receive an “F” in this course if they have:

- 2 or more unexcused absences in the first 4 weeks of the class
- 3 or more unexcused absences in a T-Th class
- 5 or more unexcused absences in a MWF class**

Absences will be excused if they meet the University criteria for excused absences.

Make-up Policy

- Essays and assignments are due on the Due Date.
- Late essays *without* an acceptable excuse:
 - will be deducted 5 points per day until the essay is submitted (including weekends and holidays).
 - will continue to receive point deductions until it reaches a grade of 50, or “F”.
 - will receive a grade of “0” if the essay is never submitted.
- Late daily assignments will be failed if unexcused.
- Excused late essays and daily assignments must be turned in by an alternate due date determined by the instructor and communicated to the student at the time the excuse is granted.

Midterm Grades

Midterm grades will be posted on *ArrowOnline* and will be available for viewing by **March 11, 2009**.

Drop Date

The last day to drop this class is **March 19, 2009**. Before you decide to drop, you should talk to me first. You should also schedule an appointment with your advisor and then the Dean of your college.

Academic Integrity

The English Department adheres to the ULM published policy on Academic Dishonesty (see page 4 in ULM Student Policy Manual, or <http://www.ulm.edu/studentpolicy/>). This policy pertains foremost to deliberate acts of plagiarism, punishable on a first offense by a minimum of a “0” on the plagiarized assignment and a report of the incident to appropriate University officials. On a second offense, the minimum sanction is an “F” in the course. On a third offense, the minimum sanction is disciplinary action at the University level (academic probation, suspension, etc). More serious first or second offenses may result in action at the University level as well.

However, if a freshman year instructor determines to his or her satisfaction that a student’s genuine misunderstanding of quotation, citation or documentation rules that are being learned in

the class has resulted in accidental plagiarism on an assignment, the instructor may opt to give a “50” rather than a 0.

Plagiarism may be defined as the use of another person’s words, ideas, research or interpretation of facts; and images, graphics or other original work without appropriate citation and documentation. In this class, we use the rules of MLA style. To avoid plagiarism one must:

- Put all borrowed language—even key words—into quotation marks or block quotation format.
- Avoid copying a source’s sentence structure and order of ideas too closely without quoting directly.
- Cite in parentheses the author’s name and page or paragraph number if applicable for all quotations from a source **and** for all borrowed ideas, facts, graphics, statistics or other materials.
- Provide an entry on a Works Cited page prepared according to MLA style for every source used and cited in the paper.

Class Policies and Procedures

- All policies stated in the current ULM Student Policy Manual & Organizational Handbook are in effect in this class. (see <http://www.ulm.edu/studentpolicy/>)
- Students in violation of University policies regarding such critical matters as possession of alcohol or drugs (or apparent intoxication from them) or possession of weapons will be summarily dismissed from class and turned over to appropriate University officials for disciplinary action.
- Students who are seriously or repeatedly disruptive in class or disrespectful to the instructor or other students will also be asked to leave until the matter can be resolved in a conference with the instructor and/or the Director of the First Year Writing Program.

Cell Phone Policy

- Cell phones should be turned off or set to vibrate only when in academic buildings (including the University Library) and may be used only in restrooms, group study rooms, and offices. Text messaging may be used throughout the Library (with the exception of the classrooms) provided that no audible sound is used to notify the recipients.
- All people carrying cell phones into a classroom, laboratory, or clinic must turn off and store (e.g., in a backpack, purse, phone holster, or other similar item) their phones prior to entering the room. Cell phones are not allowed on desks or table tops. If there is an extenuating circumstance that allows the cell phone to be on during a class, the student must obtain permission from the instructor prior to the beginning of class and must operate the phone in a silent (vibrate only) mode. Each instructor may further restrict the use of cell phones in class and may determine the consequences for violations of this policy.
- People who violate this cell phone use policy may be asked to leave the building.


Course Evaluation Policy

Students are expected to complete the on-line course evaluation at the end of the semester.

Student Services

The following services are available to students, and we encourage you to use them when you need them:

- **The Write Place** is where students may go for tutoring or for use of computers.
- **The Student Success Center** (<http://www.ulm.edu/studentsuccess/>) offers academic assistance including help with study skills, tutoring and monitoring of students who need academic support.

- 
- **Student Health Services** (<http://www.ulm.edu/studentaffairs/>) is available for basic medical care and referral.

Emergency Procedures

- In case of critical injury to, or illness of, anyone in class, the instructor or a student should call campus security and/or 9-11 immediately.
- In case of fire or a fire alarm, leave the room in an orderly fashion and head for the nearest safe exit. If you are the first to see the fire, call 9-11 and/or campus security
- In case of severe weather, seek shelter in the hallway of the first floor of the building.

Addiction: How to Recognize It and How to Help

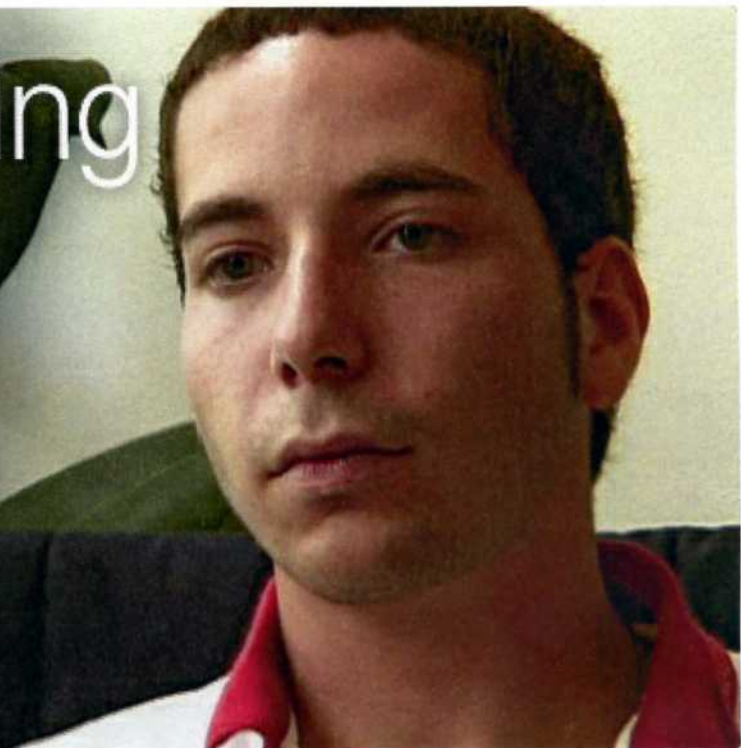
It is estimated that over 133 million people are affected by addiction in our society. That is almost half the population of the United States. This workshop will look at the belief system of the addict, signs of addiction and just what addiction is and how one can help.

**ULM -
Counseling
Center**

Office: 318-342-5220
Fax: 318-342-5228

Understanding Addiction

Addiction is a chronic relapsing brain disease. Brain imaging shows that addiction severely alters brain areas critical to decision-making, learning and memory, and behavior control, which may help to explain the compulsive and destructive behaviors of addiction.



**WEDNESDAY, AUGUST 27, 2008
STUDENT CENTER RM. 161—4 P.M.—5 P.M.**

The ULM Counseling Center Presents:



Recognizing and Preventing Dating Violence

October 2, 2008 4:00 p.m.

Bayou Suites Conference Room

This workshop is open to all ULM students.

FRYS students- please call the

Student Success Center, 342-3667 and register beforehand.

私は愛する

I love you.

te amo

Je t'aime

我爱你

σας
αγαπώ

**The
Languages
of Love:
What's
Your Love
Language?**

Presented by the ULM Counseling Center

2/9/2009 6:00 p.m.

Student Center Room 161

FRYS student must register at the
Student Success Center, 342-3667.

Contact: ULM Counseling Center,
342-5220.
