

Faculty Luncheon

Fall 2007

August 14, 2007

A photograph of a brick wall with the text "UNIVERSITY OF LOUISIANA MONROE" in large, dark, raised letters. The wall is topped with a decorative border of small white bricks. In front of the wall is a flower bed with various colorful flowers, including tulips and red flowers. The background is a light-colored sky.

UNIVERSITY OF LOUISIANA
MONROE

New Deans

College of Arts & Sciences

Associate Provost,
Texas A&M International
University

Ph.D. in Comparative Literature
UC-San Diego



Dr. Jeffrey Cass

New Deans

College of Education and Human Development

Dean of the College of
Education and Professor,
Lander University

Ph.D. in Exercise Physiology
Univ. of Southern Mississippi



Dr. Sandra M. Lemoine

New Deans

College of Health Sciences

Associate Dean of Health Sciences
Winston-Salem State University

Ed.D. Human Services Admin.
University of Sarasota

M.S. in Microbiology
University of Arkansas

Post-Doctorate Fellow in Oncology
Johns Hopkins University



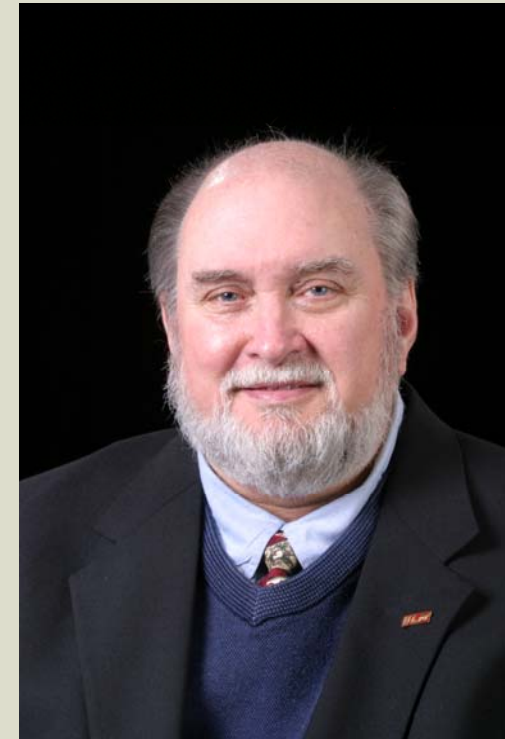
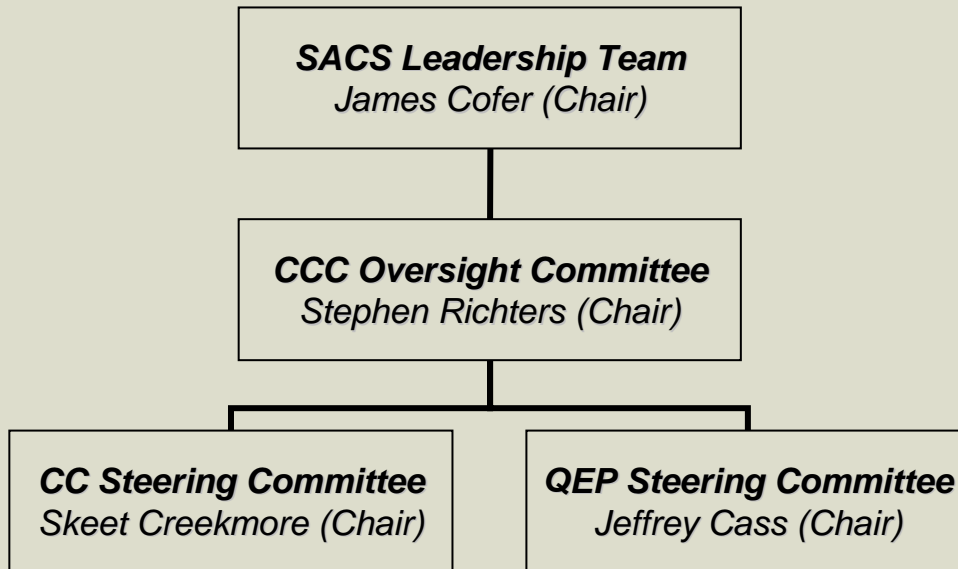
Dr. Denny G. Ryman

New Faculty

<u>College</u>	<u>Number</u>	<u>Institutions</u>
AS	15	Alabama Auburn
BA	7	Baylor Florida
ED	3	Indiana Pittsburgh
HS	7	Texas A&M
PH	6	Colorado State
LB	3	Michigan State
Total	41	

SACS Accreditation Update

Reaffirmation Year: **2009**



Dr. Walter "Skeet" Creekmore
Coordinator for SACS Reaffirmation

SACS Reaffirmation Process

- Compliance Certification
- Quality Enhancement Plan (QEP)
- Closed Loop Data Collection Survey
- Dataliant Compliance Assist System

Shared Governance

- Definition
- Drafting Committee
- Educational Committee



Dr. Paxton Oliver

Associate Dean of Health Sciences

Please welcome ULM
President
James E. Cofer, Sr.



Increase in State Funds:

\$6.2 Million

FY 2007 - 2008

New Recurring Funds:

- Faculty Pay Raise \$1.2 M
- Mandated Costs Increases \$1.6 M
- College of Pharmacy \$1.0 M
- Staff Pay Raise \$1.0 M
- Additional Discretionary Operating Funds \$1.4 M
- *Total New Recurring Funds* \$6.2 M

Increase in State Funds:

\$6.2 Million

FY 2007 - 2008

Non-Recurring Funds:

- College of Pharmacy (to complete Bienville renovations) \$1.5 M
- College of Pharmacy Vivarium \$3.0 M
- Banner Migration (1st Year) \$1.7 M
- *Total Non-Recurring Funds* \$6.2 M

Faculty Salary Increases

Legislature

- Legislature appropriated 5% of instructional/research salaries to ULM
- Legislation required that $\frac{1}{2}$ of those funds (excluding benefits) be appropriated to eligible faculty in an equal amount (\$1446 at ULM)
- Remaining $\frac{1}{2}$ of funds to be awarded based on merit, equity, discipline (individual college plans)

Faculty Salary Increases

ULM

- University contributed additional \$54/faculty member
- University also provided an additional 1.1% for distribution based on merit
- Resulted in an average increase of 6.5% for faculty

Faculty Pay Raises

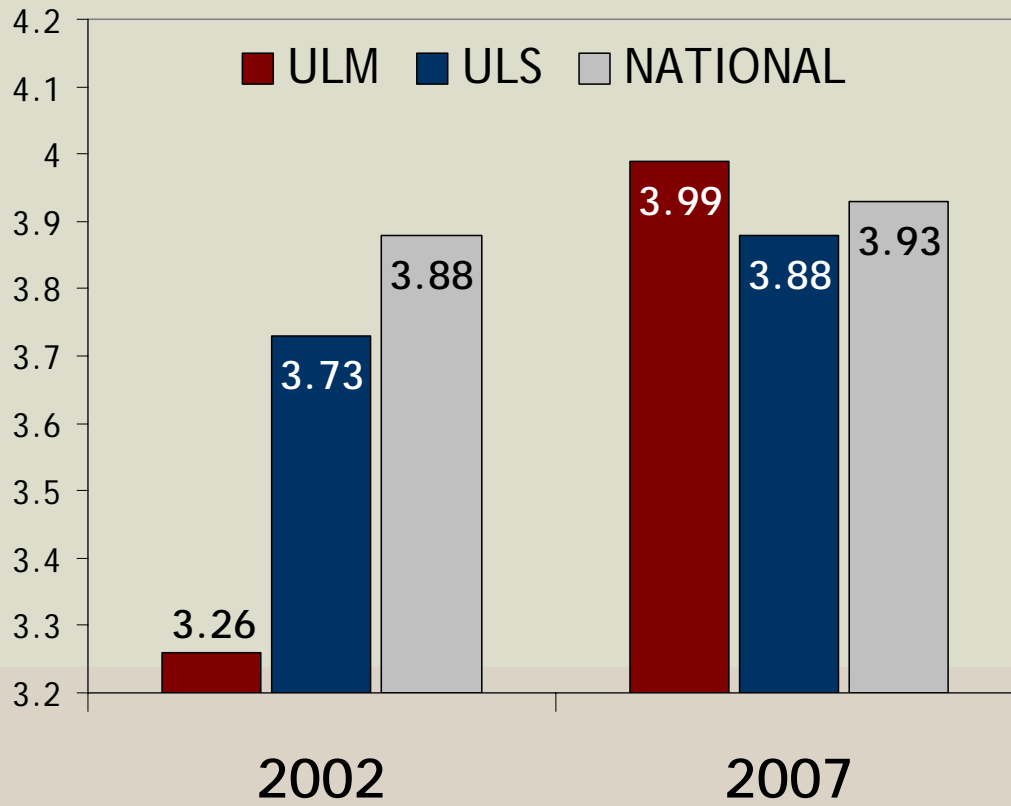
- During this Administration, the University has provided salary increases in 4 out of the last 5 years

Construction Update

- DeSiard St. Renaissance & Intermodal Parking Facility
- Bienville Renovations
- Student Success Center
- Residence Halls
- Mathematics Resource Center
- Write Place
- Biology Laboratory in Garrett Hall



ACT Student Opinion Survey



- ULM leads ULS in increase in Student Satisfaction

ACT Student Opinion Survey

Highest Rated Factors – 2007 Survey

- Instruction in major field
- Course content in major field
- Attitude of faculty toward students
- Out-of-class availability of instructor
- Concern for you as an individual
- Availability of advisor
- Value of information provided by advisor
- This college in general

Technology Enhancements

- FlightPath
- Textbook clearinghouse
- MyULM (single sign-in web portal)
- Moodle (BlackBoard replacement)
- LONI connection

Upcoming Accreditations

- Art NASAD
- Aviation CAA, Inc.
- College of Business AACSB-International
- Computer Science ABET
- College of Education NCATE

Faculty Initiatives

- Marriage and Family Therapy
 - accreditation renewal for M.A. program
 - initial accreditation for Ph.D. program
- Gerontology (Long-Term Care concentration)
 - M.A. program first nationally accredited in U.S.
- Pharmacy
 - Full accreditation restored

Academic Initiatives

- Freshman year advising
- Mathematics course redesign
- English course redesign
- Biology and chemistry course redesign
- Office of Academic Internships
- Establish center to support pedagogical initiatives

Faculty Accomplishments

- John Carr and Amity Bass appear on Discovery Channel's Animal Planet; Anthony Feig appeared on Travel Channel
- Christine Berry chairs Citizen's Insurance Oversight Board
- Ace's Adventures activity book, web site, lesson plans
- John Sutherlin distributes documentary in Turkey
- Debbie Wisenor one of 20 chosen for Scholars Institute

Faculty Accomplishments

- Paul Sylvester awarded \$618,000 to research breast cancer
- CEHD acquires \$5,315,894 to attract teachers in LA & MS
- Lisa Colvin earns place on Triathlon Team USA
- Joe McGahan and John Sutherlin co-direct Social Sciences Research Laboratory
- Inaugural season for Louisiana Lyric Opera
- Bob Eisenstadt updated regional economic fact book

The message is simple -

YOU

are making a difference

A photograph of a brick wall with the text "UNIVERSITY OF LOUISIANA MONROE" in large, dark, raised letters. The wall is topped with a decorative border of small white tiles. In front of the wall is a flower bed with various colorful flowers, including tulips and red flowers, and a low brick wall in the foreground.

UNIVERSITY OF LOUISIANA
MONROE