

Short Answer and Multiple Choice: 2 points each

1. Name two prominent tubists.

2. This individual, a tubist with John Philip Sousa’s band, is the namesake of a basic mouthpiece design used by Schilke and Conn, among others. These mouthpieces are usually appropriate for high school, college, and professional players, but may be too big for beginners. (Last name only is ok – it’s the same as the name of the mouthpiece!)

3. Name two music stores that maintain reasonably large selections of tubas.

4. What is the term usually applied to a contrabass valve trombone of sorts that is often played by tubists to achieve an “authentic” sound on the lowest brass part of Verdi operas?

5. Which tuba “key” is preferred by most American school band directors? Is this a bass or contrabass tuba?

6. Why should band directors seek to purchase tubas with piston valves rather than with rotary valves?

7. This Chicago Symphony Orchestra tubist, now deceased, became such an expert on breathing as applied to wind instrument and vocal sound production that his services were sought out by musicians and even medical doctors throughout the world.

8. What invention of approximately 1815 essentially enabled the tuba to be invented?

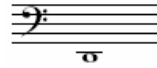
9. As temperature decreases, the pitch of brass instruments becomes progressively
 - a. flatter
 - b. sharper

10. A wide mouthpiece cup diameter
 - a. allows greater ease in lower register playing, while making upper register playing somewhat more difficult
 - b. creates greater ease of tone production in all registers, especially for players with thin lips
 - c. enhances upper register playing while hampering the lower register

Fingering Identification: 2 points each

*Indicate the fingerings for the four-valve NON-COMPENSATING BBb tuba. (The kind you’re using.)

11. _____



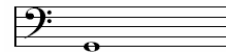
12. _____



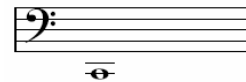
13. _____



14. _____



15. _____



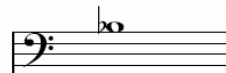
16. _____



17. _____



18. _____



Discussion: 12 points

Explain how you would help a tuba player that is struggling with reaching the lowest registers of the instrument. Use the back of this sheet if necessary.