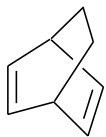


A

Student ID \_\_\_\_\_

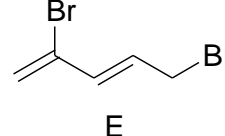
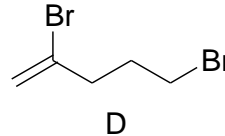
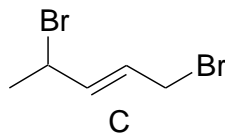
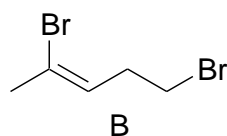
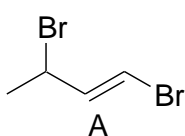
MARK ONE ANSWER FOR EACH QUESTION ON BOTH THE EXAM AND YOUR SCANTRON!

1. Which diene and dienophile are best suited to prepare the compound below?

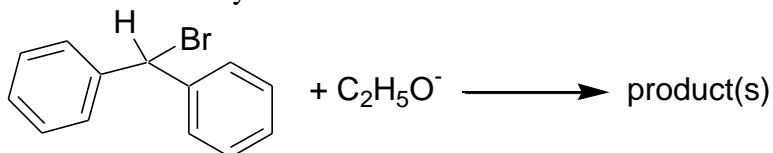


- A. 1,4-cyclohexadiene and acetylene
- B. 1,3-cyclohexadiene and acetylene
- C. benzene and ethene
- D. cyclopentadiene and acetylene
- E. 1,3-hexadiene and acetylene

2. What is the most plausible major product for the **1,4-addition** of bromine to 1,3-pentadiene?



3. What can we say about the reactants below?



- A. The major product will be a substitution product
- B. They will mostly react with E1 elimination
- C. They will mostly react with E2 elimination
- D. We can expect a mixture of elimination and substitution products
- E. They will generate an ester

4. **This is version A. Please circle A on your scantron!**

Key qu2030-1\_4\_104a:

1. B

2. C

3. A elimination is not possible!