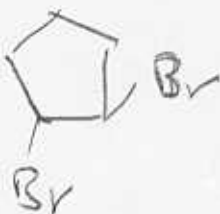
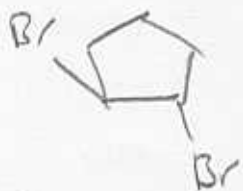


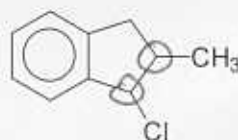
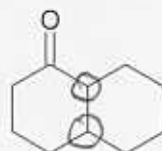
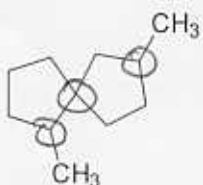
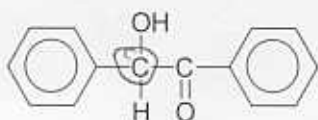
1. Which products form when you add bromine to cyclopentene? Show valid structural formulas and full, valid names for all stereoisomers you expect to obtain! (4 pts)



(S,S) - 1,2-dibromo cyclopentane

(R,R) - 1,2-dibromo cyclopentane

2. Circle all chiral carbons in the following structures! (4 pts)



3. Shown below is the keto form of acetone. What would the enol form look like? (2 pts)

