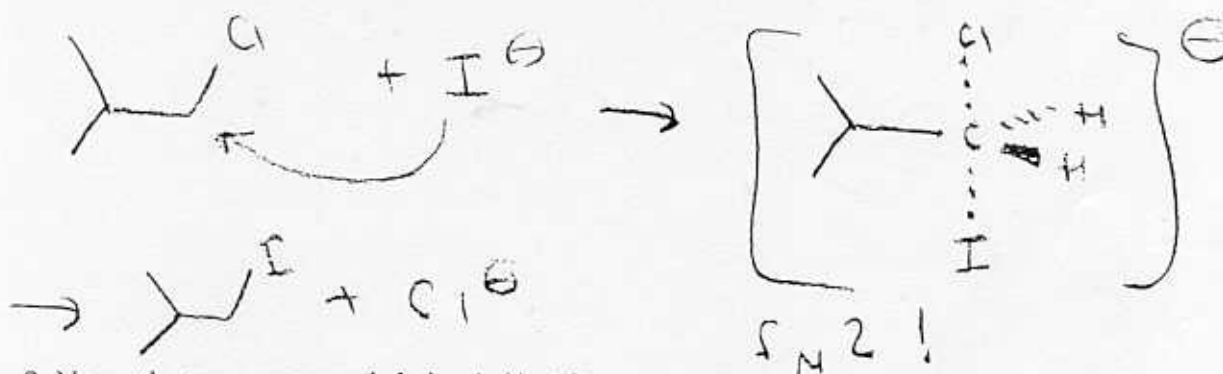
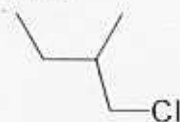
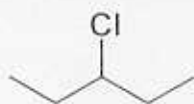


1. Propose a reaction mechanism and product for the reaction of 1-chloro-2-methylpropane with iodide as a nucleophile. Clearly show any important intermediates/transition states and the flow of electrons! What type of reaction is this? (5 pts)



2. Name the two compounds below! (4 pts)



3-chloropentane

1-chloro-2-methylbutane

3. Write a balanced reaction equation for the reaction of 2-chloro-2-methylpropane with sodium iodide! (4 pts)



4. Which compound is MORE soluble in water/ethanol mixtures, silver chloride or silver nitrate? (2 pt)

silver nitrate