



Spring 2023
Student Event Calendar



31 THINGS TO DO BEFORE YOU GRADUATE

- ☐ ATTEND FRESHMEN CONVOCATION
- ☐ PARTICIPATE IN WEEK OF WELCOME ACTIVITIES
- ☐ GO TO A WARHAWK FOOTBALL GAME
- ☐ WEAR MAROON ON MONDAYS & GOLD ON FRIDAYS
- ☐ WATCH THE SOUND OF TODAY PERFORM
- ☐ TAILGATE IN THE GROVE
- ☐ PARTICIPATE IN T-SHIRT SWAP
- ☐ TAKE A PICTURE ON THE 7TH FLOOR TERRACE OF THE LIBRARY
- ☐ EAT CHILI AT THE DON WEEMS MEMORIAL CHILI COOK-OFF
- ☐ JOIN A RECOGNIZED STUDENT ORGANIZATION (RSO)
- ☐ ATTEND THE MISS ULM PAGEANT
- ☐ PLAY OOZEBALL
- ☐ GET A PICTURE WITH ACE
- ☐ VOLUNTEER DURING MLK DAY OF SERVICE
- ☐ FEED THE TURTLES
- ☐ ATTEND A PEP RALLY
- ☐ ATTEND HAWKTOBERFEST
- ☐ RUN THE UNIVERSITY MILE
- ☐ EAT FRIED CHICKEN ON WEDNESDAY AT SCHULZE
- ☐ ATTEND THE CAB HALLOWEEN BASH
- ☐ EAT MIDNIGHT BREAKFAST DURING FINALS
- ☐ ATTEND THE SGA MARDI GRAS BALL
- ☐ MEET PRESIDENT BERRY
- ☐ PARTICIPATE IN SPRING FEVER WEEK ACTIVITIES
- ☐ TAKE A YEARBOOK PHOTO
- ☐ CATCH A WARHAWK BASEBALL GAME FROM LEFT FIELD
- ☐ ATTEND A GREEK LIFE STEPSHOW
- ☐ KAYAK ON THE BAYOU
- ☐ VISIT THE NATURAL HISTORY MUSEUM ON CAMPUS
- ☐ ATTEND A VAPA SHOW
- ☐ ATTEND GRAD FINALE AS A GRADUATING SENIOR!

DID YOU KNOW?

Pro Tips from former Hawkseeker, Peer Leader, Student Development Intern, and current P2 College of Pharmacy student Samantha Mercer!

- The ULM library is seven stories tall. Floors 1 -5 are for student use; floor 6 is for administrative offices.
- All freshmen get advised through an advisor in the Student Success Center. After your first year, everyone except pre-health majors gets advised through their academic department. Pre-pharmacy/pre-dental hygiene/etc. majors will continue to be advised in the SSC until accepted into their program. Psychology majors are advised in the SSC for their first two semesters and then move to the psychology department. Everyone must be advised to register for classes.
- A list of what you can & cannot have in the dorms is provided on the Res Life webpage: ulm.edu/reslife.
- ULM does allow freshmen to have cars on campus. Residents park in yellow curbs (usually near dorms), commuters park in white curbs (scattered), & faculty/staff park in maroon curbs.
- The Student Success Center offers free tutoring up to 2x per week for math & science courses.
- Get out of your dorm to study! There are study lounges in all dorms, study rooms in the library, & several other spaces available.
- Getting involved on campus is important to your college experience and development. Graduate & professional programs want to see a well-rounded individual, including campus and community involvement. Check out all the Office of Student Development has to offer!



HISTORY OF THE WARHAWK

After 75 years, ULM retired the Indian mascot at the encouragement of the NCAA. The Warhawk was a semi-finalist in an online poll available to students, faculty/staff, and alumni, but the final decision, which gave us Ace the Warhawk, was left to President James Cofer Sr. The history behind the symbolic mascot is what makes it special: a squadron of fighter pilots in World War II flew in P-40 Warhawk fighter planes, which are an important symbol of our institution as well. One of these men was war hero Major General Clare Lee Chennault, Franklin Parish native. The Chennault Aviation and Military Museum, located near Monroe Airport, features historical exhibits about Chennault and the men who flew with him in the American Volunteer Group. Admission is free and the museum is open five days a week.



ALMA MATER

By the bayou's tranquil water,
Where friendships thrive and grow,
Proudly stands our alma mater
Ever home for us to go.
Here cypress stands in splendor
And gracefully they touch the breeze.
Though friends my leave and lives may change
Faithful we shall always be.
Shining bright the bayou's gem
Ever loyal to ULM.

ULM TIMELINE

Ouachita Junior College.....founded September 1931
Northeast Center of Louisiana State University.....1934
Northeast Junior College of Louisiana State University.....1939
Northeast Louisiana State College.....1950
Northeast Louisiana University.....1970
University of Louisiana Monroe.....1999

FIGHT SONG

Cheer for the Warhawks,
With their fighting spirit bold.
We will keep our banners waving,
For the old Maroon and Gold.
Our battle cry rings to the sky,
Our goal is victory.
But win or lose, we'll stand by you,
and ever loyal we will be.
U-L-M
Go Hawks Go!



**President Dr. Ron Berry &
First Lady Dr. Christine Berry**



Dr. Mark Arant
Provost and VP for
Academic Affairs



Dr. Michael Camille
VP for Informational
Services & Student Success



Lisa Miller
VP for Enrollment Management
& University Relations



Dr. Bill Graves
VP for
Business Affairs



Dr. Pamela Saulsberry
Executive Director for
Diversity, Equity, Inclusion



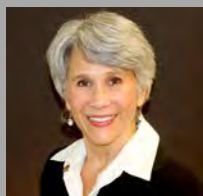
Seth Hall
Interim Athletic
Director



Sherrye Carradine
Legal & Compliance
Counsel



Kristi Davis
Assistant VP for
Budget and Administration



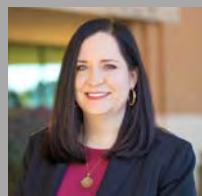
Susan Chappell
Executive Director
ULM Advancement, Foundation
& Alumni Relations



Dr. John Sutherlin
Chief Innovation &
Research Officer



Treina Kimble
Special Projects Officer
& Title IX Coordinator



Nicole Walker
Controller & Director of
Financial Analysis



Fernando Cordova
Director Internal Audit



Dr. Valerie Fields
Vice President for
Student Affairs

Faces of Student Affairs



Meghan Olinger
Director of
Student Advocacy
& Accountability



Tommy Walpole
Executive Director
of Auxiliary Services



Kristin Chandler
Executive Director of
Career & Student
Development



Micène Fontaine
Recruiting,
Retention, &
Marketing Officer



**Michael
Stogsdill-Bricker**
Director of
Career Development



**Jamare "Chris"
Williams**
Director of Student
Development



Brandon Bruscatto
Director of
Recreational
Services



Chrissie Autin
Director of
Event Services



Terri Lancaster
Director of
Environmental
Analysis Laboratory



Tresea Buckhaults
Director of Housing



Georgia Sanderson
Director of
Incumbent Worker
Training Program



Karen Foster
Director of Self-
Development,
Counseling, & Special
Accommodations



Tom Torregrossa
Director of University Police

UNIVERSITY POLICE DEPARTMENT

Services

- Warhawk Alerts/ Campus Updates
- Campus Escort Service
- Emergency Call Boxes
- Campus Vehicle Registration
- Parking & Passes
- Tickets/Appeals
- Battery Boost/ Car Unlock
- Passport Photos/ Fingerprinting
- Public Safety Presentations
- Special Event Security/Parking
- Campus Crime & Safety



Tom Torregrossa, Chief of Police

Finalist for Safety Director of the Year
Torregrossa served 36 years with the Monroe Police Department before retiring and joining ULM in 2015.

Filhiol Hall | 3811 DeSiard Street, Monroe, LA 71209
318-342-5350 | ulm.edu/police/

OUR CAMPUS IS NOW PROTECTED BY



ULM Safe

Smartphone App



Anonymously report safety concerns
while attaching
photos / videos

Contact campus safety forces quickly
and directly in
emergency situations



**ALLOW LOCATION SERVICES &
CONNECT TO Wi-Fi FOR BEST RESULTS**

CAMPUS RESOURCES AVAILABLE TO YOU

WHERE?

@recservices
ulm.edu/recserv
Activity Center
318-342-5305

WHAT?

- Wellness services: group exercise classes, personal training, body composition and measurements, blood pressure screening, and more
- Intramural sports and ESPORTS
- The Nest Gaming Lounge
- ULM Food Pantry
- Spirit Groups
- Water Ski Team



Recreational Services



Self Development, Counseling,
& Special Accommodations

WHERE?

ulm.edu/counselingcenter
kfoster@ulm.edu
318-342-5220

WHAT?

- Special accommodations
- Emergency crisis services
- Personal, group, and educational counseling
- Substance Abuse Recovery Program
- Outreach programs and workshops
- Resources for self-care, anxiety, insomnia, and stress management
- COVID-19 assistance

WHERE?

@ulmstudentdevelopment
ulm.edu/studentdevelopment
Student Center, 2nd Floor
studentengagement@ulm.edu
318-342-5287

WHAT?

- Student activities and programming
- Recognized Student Organizations
- Campus Activities Board
- Student Government Association
- Greek Life
- ULM Titleholders



Student Development



Career Development

WHERE?

@ulmcareerdevelopment
ulm.edu/careerdevelopment
Student Center, 1st Floor
careerdevelopment@ulm.edu
318-342-5338

WHAT?

- Campus Employment
- Major Exploration
- Career Week
- Career Style Show
- JC Penny Suit Up Event
- Elevator Pitch Contest
- Job Fairs
- Handshake
- Graduate/Professional School Apps
- LinkedIn Profile Development
- Career Coaching
- Internship/Job Search Assistance
- Resume & Cover Letter Feedback
- Mock Interviews
- ULM Mentorship Program
- Warhawk Wardrobe Career Closet

WHERE?

ulm.edu/warhawkcard
4031 Northeast Drive
UCOM II Room 153
318-342-5002
idcard@ulm.edu

WHAT?

- Campus Dining & Meal Plans
- Warhawk Express
- ULM ID Cards
- Voter Registration
- Other Uses for Warhawk ID Cards/Card Holder Perks & Discounts



Warhawk ID Services



Health Clinic

WHERE?

ulm.edu/healthclinic
1140 University Avenue
(corner of Lasalle Street & University
Avenue, across from Madison Hall)
318-342-5220

WHAT?

- No copayments for students or employees insured by Vantage Healthplan
- Basic Family Practice Services
- Immunizations
- Laboratory Services
- Flu Clinics
- Prescription/Medication Pick Up
- General Health Screenings

WHERE?

ulm.edu/osaa
Sandel Hall 139
osaa@ulm.edu
318-342-5230

WHAT?

- Student advocacy initiatives and resources
- Resource fairs
- Student Handbook policies
- Code of Student Conduct
- Incident reporting



**Student Advocacy
and Accountability**

IMPORTANT PHONE NUMBERS

- Activity Center/Rec Services: 342-5305
- Admissions: 342-5259
- Athletics: 342-5360
- Bookstore: 342-1982
- Career Development: 342-5338
- College of Arts, Edu, & Sciences: 342-1235
- College of Business & Social Sciences: 342-1100
- College of Health Sciences: 342-1655
- College of Pharmacy: 342-1600
- ULM Online: 342-3145
- Financial Aid: 342-5320
- FIXX (Maintenance): 342-3499
- Food Pantry: 342-5305
- Food Services: 342-1995
- International Student Services: 342-5225
- LACAP: 342-5130
- Library: 342-1063
- Marketing & Comm: 342-5440
- Recruiting: 342-1885
- Registrar's Office: 342-5262
- Residential Life: 342-5240
- Student Advocacy & Accountability: 342-5231
- Self-Development & Counseling Center: 342-5220
- Scholarships: 342-5321
- Student Affairs: 342-5215
- Student Advocacy & Accountability: 342-5225
- Student Billing/Warhawk Express: 342-5116
- Student Development: 342-5287
- Student Success Center: 342-3667
- Testing/CLEP: 342-5430
- TRIO Program: 342-1097
- ULM (Switchboard): 342-1000
- ULM Health Clinic: 342-1651
- ULMPD: 342-5350
- Veterans Affairs: 342-5268
- Warhawk ID Services: 342-5002



STUDENT GOVERNMENT ASSOCIATION

Working directly with the ULM administration to pass bills and legislation to benefit students.

Year-round free scantrons and pencils, RSO scholarships, and more!

Previous projects include the Bayou Pointe Student Event Center, dock on the bayou, student involvement stoles, HUB construction, and turtle feeders.

Future Projects include amphitheater construction.

 sga@ulm.edu  @ulmsga  ULM Student Government Association



CAMPUS ELECTIONS, LUNCH SOCIALS, GIVEAWAYS, HOMECOMING ACTIVITIES AND COURT, FAMILY DAY, MARDI GRAS BALL AND COURT , GAME DAY TAILGATING



January

Sun

Mon

Tues

Wed

Thurs

Fri

Sat

1

New Year's Day

2

3

4

5

6

**HOUSING
MOVE-IN**

7

8

9

10

11

**SPRING
SEMESTER
BEGINS**

12

13

14

15

16

**MLK
DAY OF
SERVICE**

All food services closed

17

18

19

Sipping T.E.A.
with the VP

Breakfast for Dinner*

20

21

22

23

24

NPHC Greek-ish

January Birthdays*

25

26

Potato Bar*

27

28

29

JC Penny
Suit Up Event

30

31

NPHC WEEK

Karaoke Night *

IMPORTANT
dates

- 1/1/23 New Year's Day
- 1/11/23 Spring Semester Begins
- MLK Day of Service
- 1/13/23 Last Day to Add/Drop with no "W"

* At Schulze



Alpha Kappa Alpha Sorority, Inc. | Delta Sigma Theta Sorority, Inc. | Sigma Gamma Rho Sorority, Inc. | Zeta Phi Beta Sorority, Inc.
 Alpha Phi Alpha Fraternity Inc. | Kappa Alpha Psi Fraternity, Inc. | Omega Psi Phi Fraternity, Inc. | Phi Beta Sigma Fraternity, Inc.



Greek Life

Adrienne Drago
Greek Life Coordinator

Student Center, SUB # 247
 318-342-5278 | drago@ulm.edu



ULM Greek Life



@ulmgreeklife @ulm.nphc

February

Sun

Mon

Tues

Wed

Thurs

Fri

Sat

NPHC WEEK

Pizza Day*

16 CAB ULM's
Got Talent
Computer Sciences &
Cyber Security Jobs Fair
Sipping T.E.A.
with the VP
Mardi Gras*

**MARDI GRAS
BREAK**

First 8-week Session
Drop Date

February Birthdays*

Taco Tuesday*

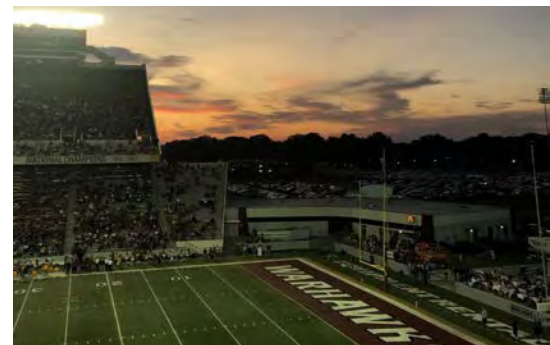
IMPORTANT
dates

- 2/16 ULM's Got Talent
- 2/20-21 Mardi Gras Break
- 2/23 First 8-week Session Drop Date

* At Schulze



PEP RALLIES, GIVEAWAYS, CASINO NIGHT, HOMECOMING WEEK. LUNCH SOCIALS, WEEK OF WELCOME, ETC.



FOOTBALL TAILGATES AND CONCERTS



CAMPUS ACTIVITIES BOARD

FREE ✖️ FUN ✖️ FOOD

Instagram: @ulmcab Facebook: ULM Campus ActivitiesBoard

Email: jsinclair@ulm.edu Website: ulm.edu/studentlife/cab

FOLLOW US TO KEEP UP WITH EVERYTHING GOING ON THIS YEAR!



SPRING FEVER WEEK



HALLOWEEN BASH



March

Sun

Mon

Tues

Wed

Thurs

Fri

Sat

IMPORTANT
dates

- 3/8 Career Style Show
- 3/27 Last Day to Drop Classes with a "W"
- 3/30 Grad Finale

1

2

CAB Casino Night

3

RMI Career Fair

4

5

6

Elevator Pitch Competition
Suit up Station

7

Employer Panel

8

Virtual Career Fair
Fashion Show

9

Full-time & Internship Fair

10

Health Sciences Professional Skills
Camp Workshop

11

CAREER WEEK

Movie Night*

12

13

March Birthdays*

14

Ties with the ULM Guys

15

Wing Wednesday*

16

Sipping T.E.A. with the VP

17

Night of Champions

18

Browse on the Bayou

St. Patrick's Day*

19

20

21

22

23

Spring Fever Concert
Education & Public Service Jobs Fair

24

Oozeball

25

SPRING FEVER WEEK

26

27

Last Day to Drop Classes with a "W"

Breakfast For Dinner *

28

Taco Tuesday*

29

30

Grad Finale

31

* At Schulze



Career & Student Development

HERE TO HELP YOU CHART YOUR PATH



Kristin Chandler
Executive Director of Student & Career Development
318-342-5338 | careerdevelopment@ulm.edu



Luciana "Shonnie" Hall-Trotter (middle)
Office Manager | 318-342-5331 | hall@ulm.edu
Left: Alana Stevenson. Right: Kambry Ford

Student Development

Jamare "Chris" Williams
Director, Student Development
Student Center, SUB # 258
318-342-5289 | jwilliams@ulm.edu

Recognized Student Organization (RSO) creation and approval, and wingspan

Joel Sinclair
Student Activities Coordinator
Student Center, SUB # 256
318-342-5232 | jsinclair@ulm.edu

Campus Activities Board (CAB) Recognized Student Organization (RSO) event reservation

Adrienne Drago
Greek Life Coordinator
Student Center, SUB # 247
318-342-5278 | drago@ulm.edu

Greek Life

[@ulmstudentdevelopment](https://twitter.com/ulmstudentdevelopment)
ulm.edu/studentdevelopment

Career Development

Michael Stogsdill Bricker
Director, Career Development
Student Center, SUB # 241
318-342-3517 | bricker@ulm.edu

Career coaching, jobs, and handshake

Alana Stevenson
Assistant Director, Career Development
Student Center, SUB # 161B
318-342-5327 | stevenson@ulm.edu

Career Coaching, résumé review, and mock interview

Kambry Ford
Student Employment Coordinator
Student Center, SUB # 162A
318-342-3386 | kford@ulm.edu

On-Campus Employment Job Location and Development Program

[@ulmcareerdevelopment](https://twitter.com/ulmcareerdevelopment)
ulm.edu/careerdevelopment

April

Sun

Mon

Tues

Wed

Thurs

Fri

Sat

IMPORTANT
dates

- 4/7-14 Spring Break
- 4/17 Classes Resume
- 4/22 Greek Gala

1

2

3

4

Health Sciences
Career Fair

Karaoke Night*

5

6

7

**SPRING
BREAK**

8

9

10

11

SPRING BREAK

12

13

14

15

16

17

Classes Resume

18

Ties with the
ULM Guys

April Birthdays*

19

Part-time Job Fair

20

Sipping T.E.A.
with the VP

Carnival Event*

21

VAPA 3rd Annual Jazz
Festival

22

Greek Gala

23

24

25

26

Mentorship Ceremony

27

Foundation Awards for
Excellence

28

29

30

SEXUAL ASSAULT PREVENTION WEEK

Pretzel Day*

Chicken & Waffle Bar*

* At Schulze



School of Visual & Performing Arts



May

Sun

Mon

Tues

Wed

Thurs

Fri

Sat

1

Honor's Program
Awards Banquet

Breakfast for Dinner*

2

3

**DEAD
DAY**

4

FINALS

5

6

7

8

FINALS

9

10

**NON-GRADUATING
STUDENTS
HOUSING MOVE-OUT
WITHIN 48 HOURS OF
LAST FINAL**

11

12

Latin Honor Reception

13

Commencement

14

**GRADUATING
STUDENTS
MOVE-OUT**

15

16

17

18

19

20

21

22

23

24

25

26

27

28

29

Memorial Day

30

31

IMPORTANT dates

- 4/4 Finals Start
- 4/4 CAB Mid-
night Breakfast
- 4/10 Resident
Halls Close
- 4/13
Commencement

* At Schulze



WOMEN'S GOLF



WOMEN'S BASKETBALL



VOLLEYBALL



WATER SKI



CROSS COUNTRY



BEACH VOLLEYBALL



SOCCER



TENNIS



TRACK & FIELD



SOFTBALL

WARHAWKS



June

Sun

Mon

Tues

Wed

Thurs

Fri

Sat

1

2

3

4

5

6

7

8

9

10

PREP

11

12

13

14

15

16

17

Juneteenth

18

19

20

21

22

23

24

PREP

25

26

27

28

29

30

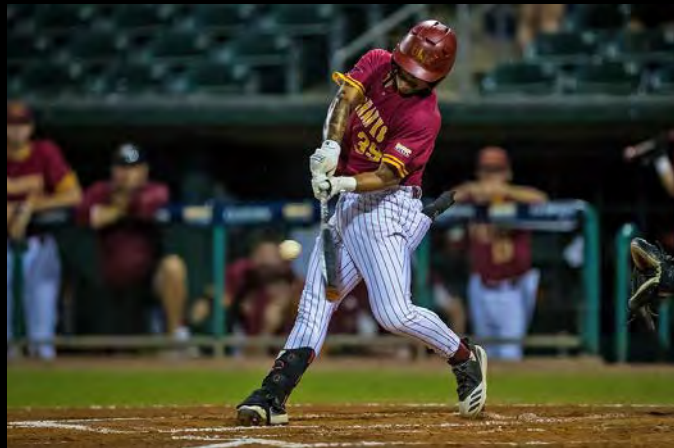
PREP

IMPORTANT
dates

- 6/7-8 Prep
- 6/16 Juneteenth
- 6/21-22 Prep
- 6/28-29 Prep



BASEBALL BASKETBALL CROSS COUNTRY FOOTBALL GOLF TRACK & FIELD WATER SKI



WARHAWKS

July

Sun

Mon

Tues

Wed

Thurs

Fri

Sat

1

2

3

4

5

6

7

8

Independence Day

9

10

11

12

13

14

15

PREP

16

17

18

19

20

21

22

PREP

23

24

25

26

27

28

29

30

31

IMPORTANT
dates

- 7/4 Independence Day
- 7/12-13 Prep
- 7/19-20 Prep

NOTES

This image shows a blank sheet of white paper with horizontal ruling lines. The lines are evenly spaced and run across the width of the page. There are no margins, text, or other markings on the paper.

2022-2023 OFFICERS



Ethan Estis
President



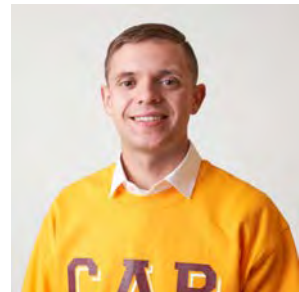
David Hernandez
Vice President



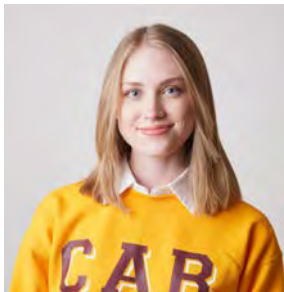
Caleb Underwood
Treasurer



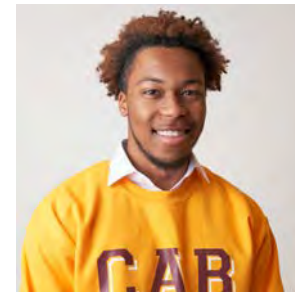
Elisa Castillion
Secretary



Sidney Jones
Interim President / VP



Anna Pitney
Public Relations



Carlos Moses
Treasurer



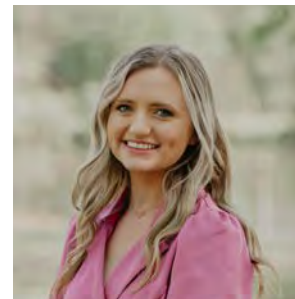
Diamond Green
Secretary



Kelly Morgan
President



Randy Head
VP of Projects



Hope Marler
VP of Public Relations



Madeline Sierra
Secretary

THANK YOU TO THESE RECOGNIZED STUDENT ORGANIZATIONS FOR SPONSORING THIS YEARS' STUDENT CALENDAR.

