

	2000				2001				2002			
	Jan-Apr	May-Aug	Sept-Dec	Total	Jan-Apr	May-Aug	Sept-Dec	Total	Jan-Apr	May-Aug	Sept-Dec	Total
<b>Total Candidate Group</b>												
No. of Candidates	76	47	18	141	40	30	10	80	13	62	27	102
School Avg Score	96.51	91.62	88.61	92.25	88.93	87.3	87	87.74	82.85	100.24	89.56	90.88
State Avg Score	96.75	88.52	86.05	90.44	84.66	93.82	82.05	86.84	75.5	101.46	87.48	88.15
National Avg Score	91.78	99.86	91.21	94.28	90.25	101.7	90.5	94.15	90.81	101.21	90.02	94.01
School Pass Rate	96.05	82.98	88.89	89.31	85	90	90	88.33	84.62	85.48	77.78	82.63
State Pass Rate	92.5	78.57	77.27	82.78	75.86	89.29	70	78.38	50	85.9	70.37	68.76
National Pass Rate	82.95	92.05	83.04	86.01	81.07	94.38	83.69	86.38	81.52	93.76	81.73	85.67
<b>1st Time Candidate Group</b>												
No. of Candidates	71	33	9	113	37	20	6	63	13	61	20	94
School Avg Score	97.13	96	94	95.71	88.32	86.9	90.67	88.63	82.85	100.44	92.8	92.03
State Avg Score	97.49	93.61	87.77	92.96	88.78	95.92	85.93	90.21	81.89	103.71	91.15	92.25
National Avg Score	96.51	101.85	96.48	98.28	94.54	103.35	94.22	97.37	95.13	103	94.62	97.58
School Pass Rate	95.77	96.97	100	97.58	83.78	85	100	89.59	84.62	85.25	75	81.62
State Pass Rate	94.59	93.18	84.62	90.80	83.33	91.84	73.33	82.83	77.78	90.28	70	79.35
National Pass Rate	91.44	95.44	91.39	92.76	87.91	96.75	90.1	91.59	89.27	96.74	88.52	91.51

2003				2004				2005				2006			
Jan-Apr	May-Aug	Sept-Dec	Total	Jan-Apr	May-Aug	Sept-Dec	Total	Jan-Apr	May-Aug	Sept-Dec	Total	Jan-Apr	May-Aug	Sept-Dec	Total
10	70	24	104	3	64	18	85	9	72	17	98	2	60		62
78.4	101.44	92.5	90.78	85.67	105.3	94.83	95.27	82.67	104.17	101.65	96.16	98	113.17		105.59
77.5	99.4	87.33	88.08	81.33	103.47	96.71	93.84	95	101.77	92.5	96.42	88.67	111.87		100.27
91.5	101.4	89.4	94.10	92.13	102.16	91.7	95.33	91.32	104.85	87.72	94.63	86.89	107.02		96.96
60	95.71	87.5	81.07	100	96.88	94.44	97.11	88.89	90.28	94.12	91.10	100	93.33		96.67
62.5	94.9	80	79.13	83.33	96.12	100	93.15	100	87.83	78.57	88.80	77.78	89.17		83.48
82.77	93.84	79.55	85.39	83.22	95.11	84.79	87.71	82.88	89.15	71.73	81.25	68.82	90.52		79.67
2	64	16	82	2	58	17	77	5	70	11	86	2	58		60
73.5	102.69	98.56	91.58	87	107.34	93.47	95.94	81.4	105.09	110.09	98.86	98	114.59		106.30
74	100.41	92.38	88.93	84	105.61	99.73	96.45	101.5	103.64	98.94	101.36	93.33	112.95		103.14
97.39	103.38	95.88	98.88	100.14	104.14	96.6	100.29	98.84	107.67	95.89	100.80	97.18	110.34		103.76
50	96.88	100	82.29	100	100	94.12	98.04	80	91.43	100	90.48	100	94.83		97.42
66.67	95.65	90.48	84.27	100	100	100	100.00	100	90.09	88.89	92.99	100	90.38		95.19
91.47	96.54	89.64	92.55	95.07	97.38	92.22	94.89	91.31	92.86	82.12	88.76	81.12	94.49		87.81

**Total Candidate Group**

	2000	2001	2002	2003	2004	2005	2006
No. of Candidates	141	80	102	104	85	98	62
School Avg Score <sup>1</sup>	92.24667	87.74333	90.88333	90.78	95.26667	96.16333	105.585
State Avg Score <sup>2</sup>	90.44	86.84333	88.14667	88.07667	93.83667	96.42333	100.27
National Avg Score	94.28333	94.15	94.01333	94.1	95.33	94.63	96.955
School Pass Rate	89.30667	88.33333	82.62667	81.07	97.10667	91.09667	96.665
State Pass Rate	82.78	78.38333	68.75667	79.13333	93.15	88.8	83.475
National Pass Rate	86.01333	86.38	85.67	85.38667	87.70667	81.25333	79.67

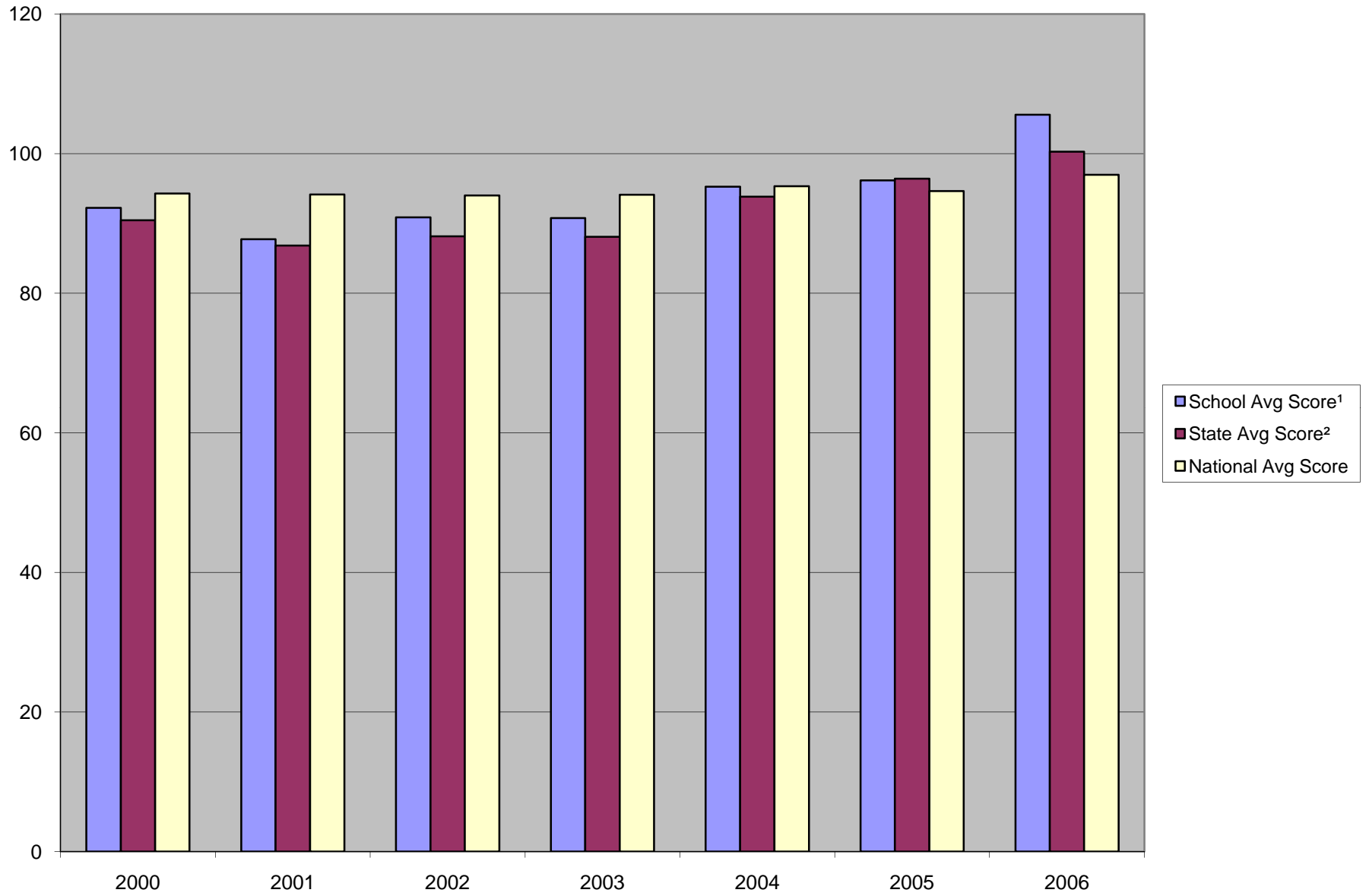
**1st Time Candidate Group**

	2000	2001	2002	2003	2004	2005	2006
No. of Candidates	113	63	94	82	77	86	60
School Avg Score <sup>1</sup>	95.71	88.63	92.03	91.58333	95.93667	98.86	106.295
State Avg Score <sup>2</sup>	92.95667	90.21	92.25	88.93	96.44667	101.36	103.14
National Avg Score	98.28	97.37	97.58333	98.88333	100.2933	100.8	103.76
School Pass Rate	97.58	89.59333	81.62333	82.29333	98.04	90.47667	97.415
State Pass Rate	90.79667	82.83333	79.35333	84.26667	100	92.99333	95.19
National Pass Rate	92.75667	91.58667	91.51	92.55	94.89	88.76333	87.805

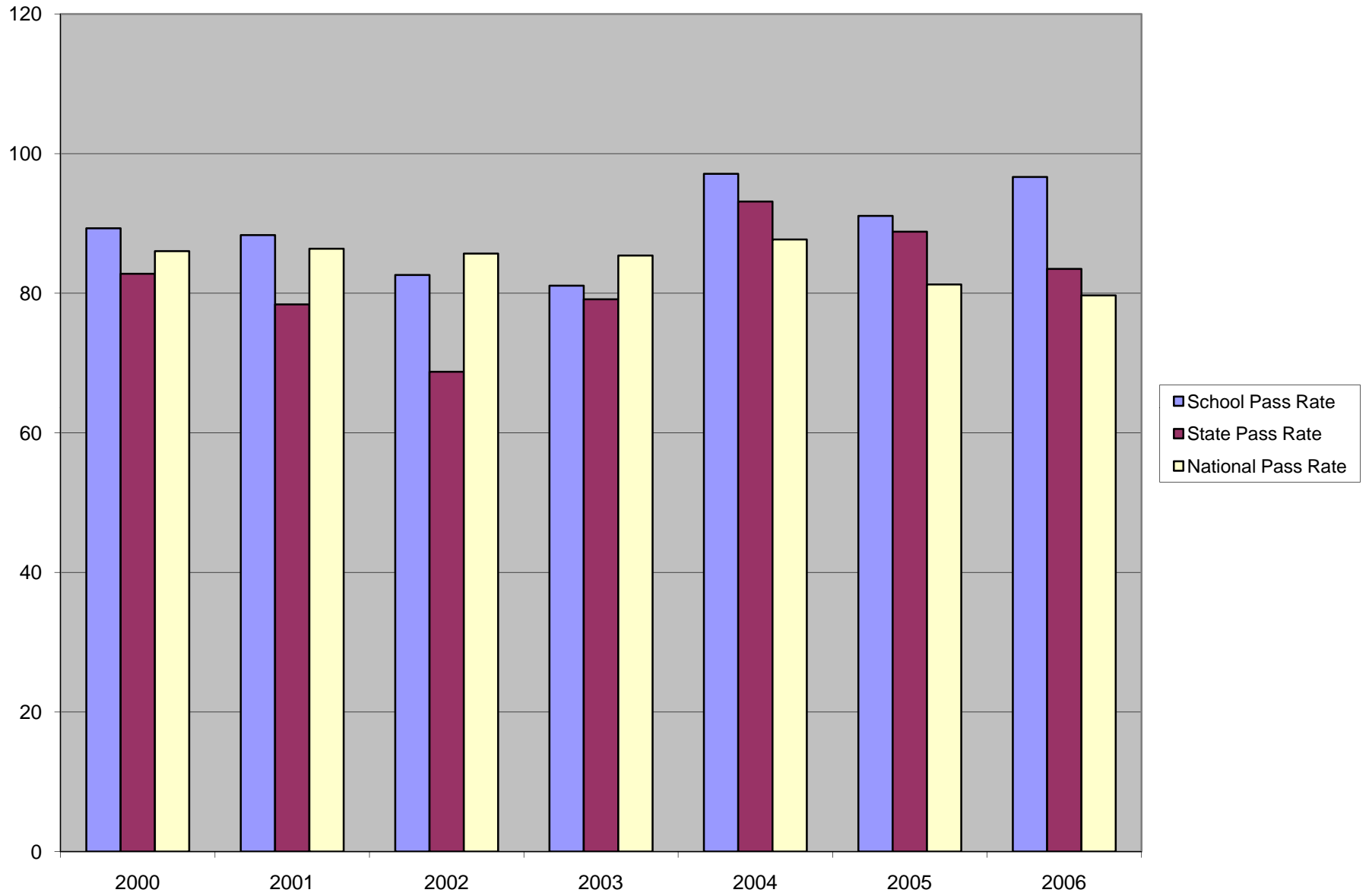
<sup>1</sup>All ULM graduates

<sup>2</sup>candidates who selected LA as home state

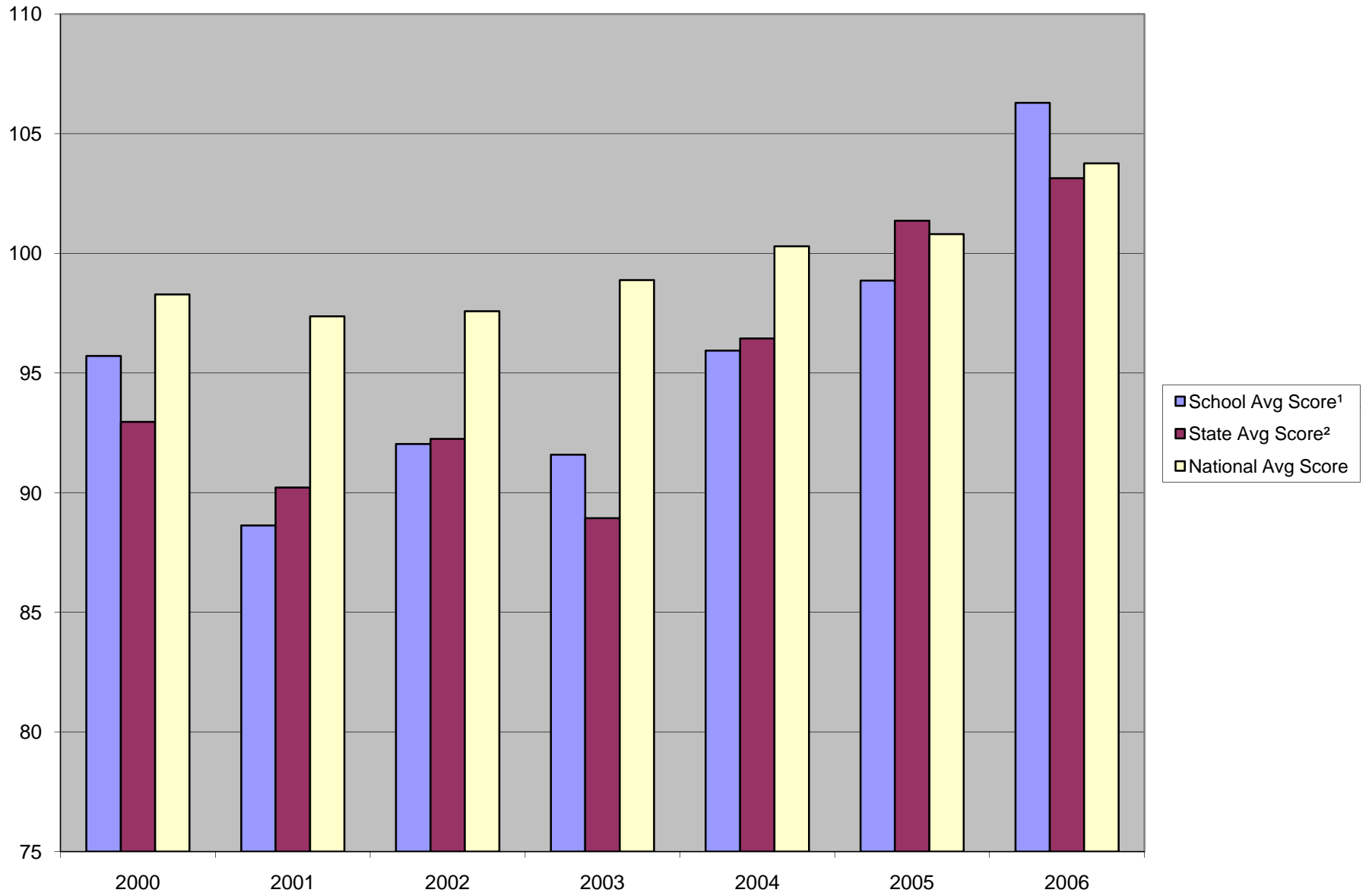
Total Candidate Scores



Total Candidate Pass Rate



# 1st Time Score



1st Time Pass Rate

