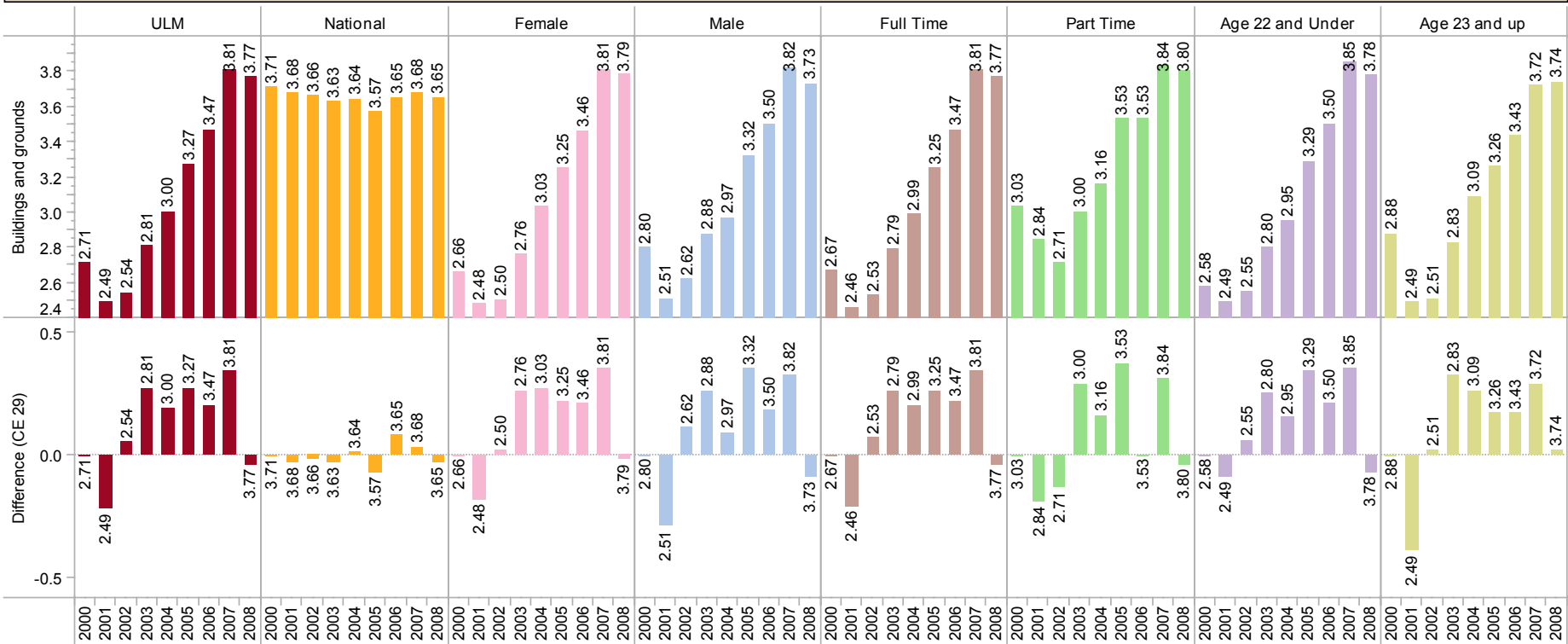


### Act Student Opinion Survey Results - Page K.CE29

**General Condition of Buildings and Grounds (CE29) - Facilities Aspects**



Year		ULM	National	Female	Male	Full Time	Part Time	Age 22 and Under	Age 23 and up
2000	Buildings and grounds	2.71	3.71	2.66	2.80	2.67	3.03	2.58	2.88
	Difference CE 29								
2001	Buildings and grounds	2.49	3.68	2.48	2.51	2.46	2.84	2.49	2.49
	Difference CE 29	-0.22	-0.03	-0.18	-0.29	-0.21	-0.19	-0.09	-0.39
2002	Buildings and grounds	2.54	3.66	2.50	2.62	2.53	2.71	2.55	2.51
	Difference CE 29	0.05	-0.02	0.02	0.11	0.07	-0.13	0.06	0.02
2003	Buildings and grounds	2.81	3.63	2.76	2.88	2.79	3.00	2.80	2.83
	Difference CE 29	0.27	-0.03	0.26	0.26	0.26	0.29	0.25	0.32
2004	Buildings and grounds	3.00	3.64	3.03	2.97	2.99	3.16	2.95	3.09
	Difference CE 29	0.19	0.01	0.27	0.09	0.20	0.16	0.15	0.26
2005	Buildings and grounds	3.27	3.57	3.25	3.32	3.25	3.53	3.29	3.26
	Difference CE 29	0.27	-0.07	0.22	0.35	0.26	0.37	0.34	0.17
2006	Buildings and grounds	3.47	3.65	3.46	3.50	3.47	3.53	3.50	3.43
	Difference CE 29	0.20	0.08	0.21	0.18	0.22	0.00	0.21	0.17
2007	Buildings and grounds	3.81	3.68	3.81	3.82	3.81	3.84	3.85	3.72
	Difference CE 29	0.34	0.03	0.35	0.32	0.34	0.31	0.35	0.29
2008	Buildings and grounds	3.77	3.65	3.79	3.73	3.77	3.80	3.78	3.74
	Difference CE 29	-0.04	-0.03	-0.02	-0.09	-0.04	-0.04	-0.07	0.02