

## Fall Enrollment for Traditional and Non-Traditional Students - 14th Class Day - Page B.F4

**Fall Traditional vs. Non Traditional Students**

calendar year		Traditional	NonTraditio..	Other	Grand Total
2000	# Students	6,415	1,863	1,122	9,400
	% of Total Students	68.24%	19.82%	11.94%	100.00%
2001	# Students	5,843	1,947	970	8,760
	% of Total Students	66.70%	22.23%	11.07%	100.00%
2002	# Students	5,405	1,799	947	8,151
	% of Total Students	66.31%	22.07%	11.62%	100.00%
2003	# Students	5,558	2,058	964	8,580
	% of Total Students	64.78%	23.99%	11.24%	100.00%
2004	# Students	5,636	2,246	952	8,834
	% of Total Students	63.80%	25.42%	10.78%	100.00%
2005	# Students	5,788	2,261	1,226	9,275
	% of Total Students	62.40%	24.38%	13.22%	100.00%
2006	# Students	5,526	1,860	1,185	8,571
	% of Total Students	64.47%	21.70%	13.83%	100.00%
2007	# Students	5,527	1,662	1,352	8,541
	% of Total Students	64.71%	19.46%	15.83%	100.00%
2008	# Students	5,493	1,623	1,651	8,767
	% of Total Students	62.66%	18.51%	18.83%	100.00%

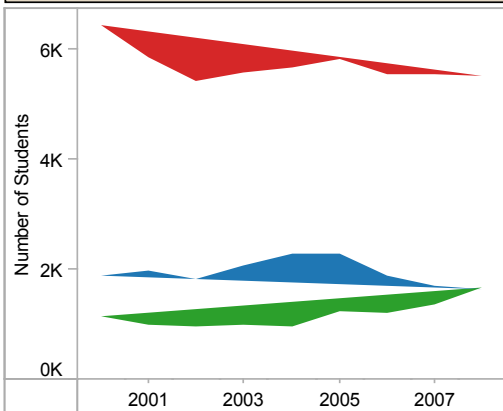
TRAD contains undergraduate students 24 years or younger not included in the "Other" category; NONTRAD contains undergraduate students 25 years or older not included in the "Other" category; and OTHER contains high school students, graduate students, non-degree seeking students, and visiting students.

**Fall SCH Values for Traditional and Non-Traditional Students**

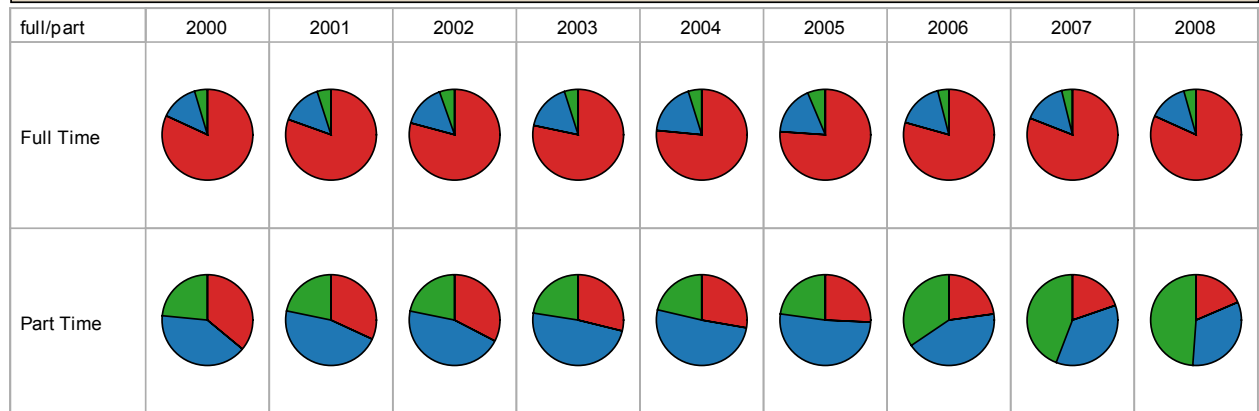
calendar year		Traditional	NonTraditional	Other	Grand Total
2000	SCH Total	93,383	19,373	7,668	120,424
	% of Total SCH	77.55%	16.09%	6.37%	100.00%
2001	SCH Total	84,644	19,299	7,158	111,101
	% of Total SCH	76.19%	17.37%	6.44%	100.00%
2002	SCH Total	78,136	18,937	7,191	104,264
	% of Total SCH	74.94%	18.16%	6.90%	100.00%
2003	SCH Total	78,877	21,600	7,243	107,720
	% of Total SCH	73.22%	20.05%	6.72%	100.00%
2004	SCH Total	80,661	24,296	7,113	112,070
	% of Total SCH	71.97%	21.68%	6.35%	100.00%
2005	SCH Total	82,842	24,244	9,228	116,314
	% of Total SCH	71.22%	20.84%	7.93%	100.00%
2006	SCH Total	80,199	20,728	7,424	108,351
	% of Total SCH	74.02%	19.13%	6.85%	100.00%
2007	SCH Total	79,616	18,383	8,341	106,340
	% of Total SCH	74.87%	17.29%	7.84%	100.00%
2008	SCH Total	78,321	16,897	9,987	105,205
	% of Total SCH	74.45%	16.06%	9.49%	100.00%

LEC - Louisiana Education Consortium Students: \*\* ULM includes SCHs for these students in reported totals. ULM does not include these students in official "headcount" for any given semester.

**Fall Traditional vs. Non Traditional Students**



**Fall SCH Values for Traditional and Non-Traditional Students**



**TradNonTrad**

■ Traditional

■ NonTraditional

■ Other