

## Spring Enrollment for Traditional and Non-Traditional Students - 14th Class Day - Page B.S4

### Headcount for Traditional vs. Non Traditional

| calendar year |                     | Traditional | NonTraditio.. | Other  | Grand Total |
|---------------|---------------------|-------------|---------------|--------|-------------|
| 2001          | # Students          | 5,871       | 1,827         | 1,001  | 8,699       |
|               | % of Total Students | 67.49%      | 21.00%        | 11.51% | 100.00%     |
| 2002          | # Students          | 5,217       | 1,939         | 1,092  | 8,248       |
|               | % of Total Students | 63.25%      | 23.51%        | 13.24% | 100.00%     |
| 2003          | # Students          | 5,003       | 1,892         | 1,019  | 7,914       |
|               | % of Total Students | 63.22%      | 23.91%        | 12.88% | 100.00%     |
| 2004          | # Students          | 4,988       | 2,055         | 933    | 7,976       |
|               | % of Total Students | 62.54%      | 25.76%        | 11.70% | 100.00%     |
| 2005          | # Students          | 5,162       | 2,199         | 888    | 8,249       |
|               | % of Total Students | 62.58%      | 26.66%        | 10.76% | 100.00%     |
| 2006          | # Students          | 5,203       | 2,054         | 1,029  | 8,286       |
|               | % of Total Students | 62.79%      | 24.79%        | 12.42% | 100.00%     |
| 2007          | # Students          | 5,034       | 1,745         | 905    | 7,684       |
|               | % of Total Students | 65.51%      | 22.71%        | 11.78% | 100.00%     |
| 2008          | # Students          | 5,044       | 1,504         | 1,061  | 7,609       |
|               | % of Total Students | 66.29%      | 19.77%        | 13.94% | 100.00%     |

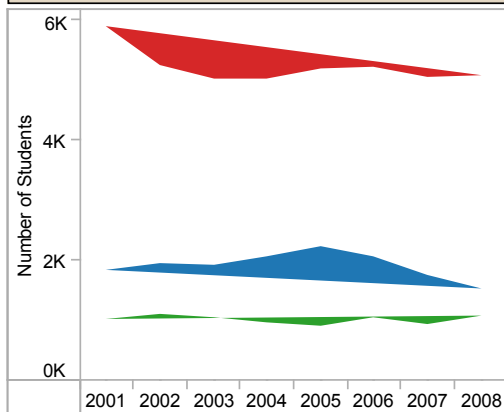
TRAD contains undergraduate students 24 years or younger not included in the "Other" category; NONTRAD contains undergraduate students 25 years or older not included in the "Other" category; and OTHER contains high school students, graduate students, non-degree seeking students, and visiting students.

### SCH Values for Traditional and Non-Traditional Students

| calendar year |                | Traditional | NonTraditional | Other | Grand Total |
|---------------|----------------|-------------|----------------|-------|-------------|
| 2001          | SCH Total      | 86,551      | 19,831         | 7,225 | 113,607     |
|               | % of Total SCH | 76.18%      | 17.46%         | 6.36% | 100.00%     |
| 2002          | SCH Total      | 77,023      | 19,760         | 7,788 | 104,571     |
|               | % of Total SCH | 73.66%      | 18.90%         | 7.45% | 100.00%     |
| 2003          | SCH Total      | 73,443      | 20,004         | 7,265 | 100,712     |
|               | % of Total SCH | 72.92%      | 19.86%         | 7.21% | 100.00%     |
| 2004          | SCH Total      | 70,810      | 21,732         | 7,140 | 99,682      |
|               | % of Total SCH | 71.04%      | 21.80%         | 7.16% | 100.00%     |
| 2005          | SCH Total      | 74,337      | 24,137         | 6,881 | 105,355     |
|               | % of Total SCH | 70.56%      | 22.91%         | 6.53% | 100.00%     |
| 2006          | SCH Total      | 74,466      | 22,609         | 7,234 | 104,309     |
|               | % of Total SCH | 71.39%      | 21.68%         | 6.94% | 100.00%     |
| 2007          | SCH Total      | 72,870      | 19,758         | 6,260 | 98,888      |
|               | % of Total SCH | 73.69%      | 19.98%         | 6.33% | 100.00%     |
| 2008          | SCH Total      | 72,203      | 16,462         | 6,772 | 95,437      |
|               | % of Total SCH | 75.66%      | 17.25%         | 7.10% | 100.00%     |

LEC - Louisiana Education Consortium Students: \*\* ULM includes SCHs for these students in reported totals. ULM does not include these students in official "headcount" for any given semester.

### Headcount for Traditional vs. Non Traditional



TradNonTrad

■ Traditional

■ NonTraditional

■ Other

### SCH Values for Traditional and Non-Traditional Students

