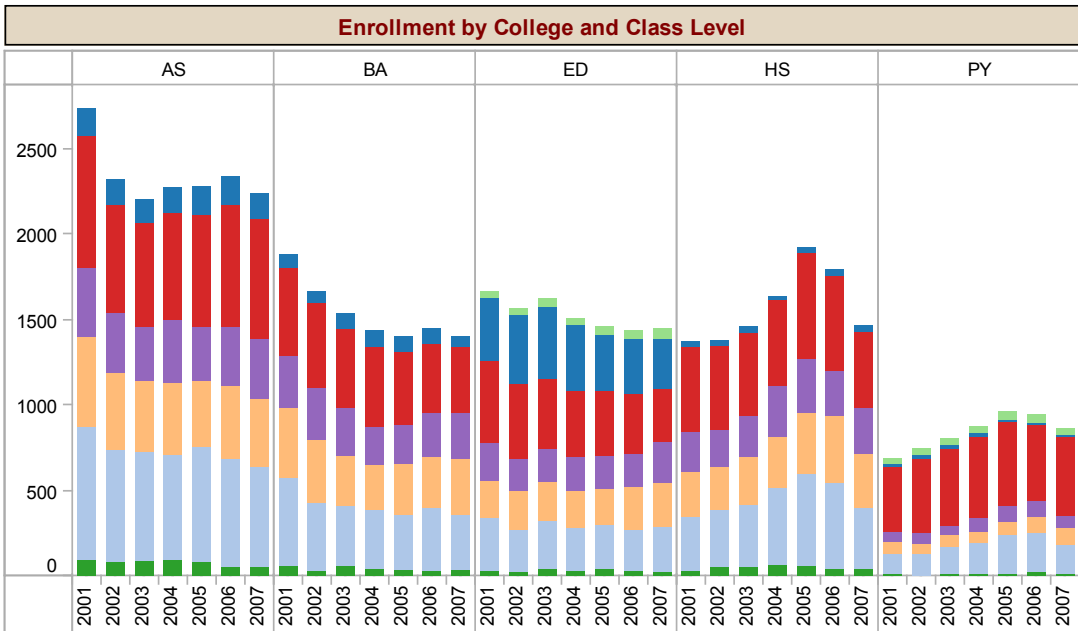
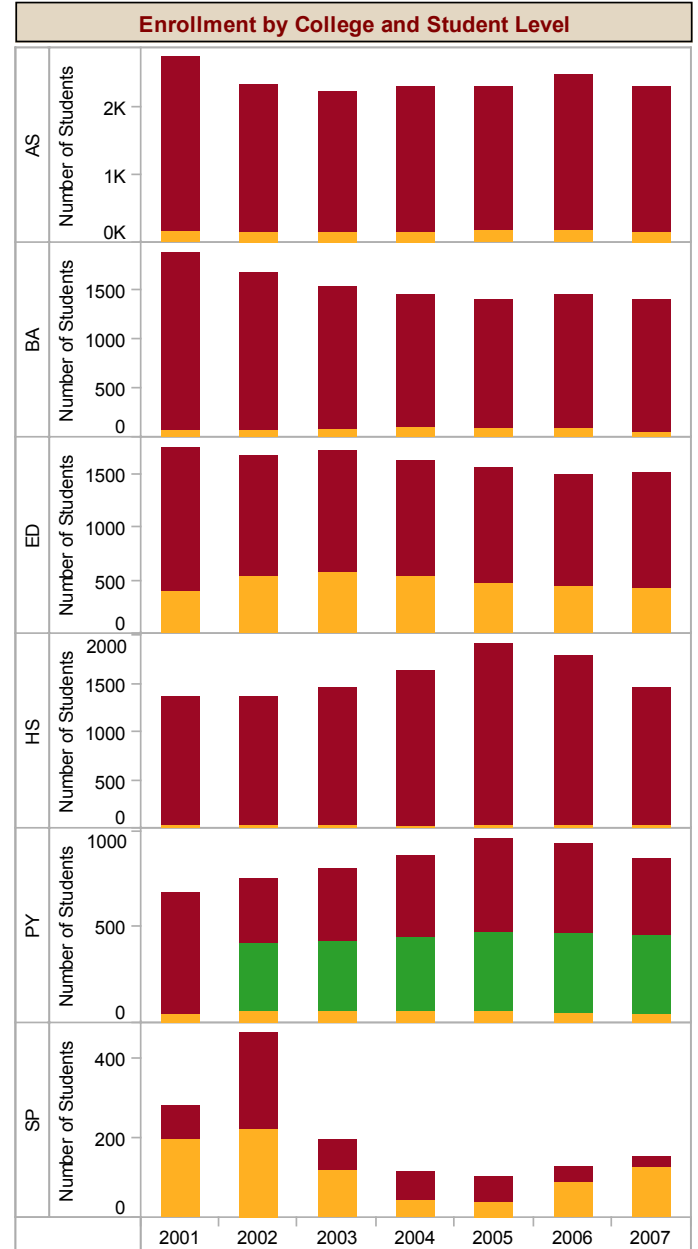


Spring Enrollment Information by College - 14th Class Day - Page B.S6

Enrollment by College							
	2001	2002	2003	2004	2005	2006	2007
Arts and Sciences	2,742	2,322	2,215	2,288	2,303	2,483	2,301
Business Administration	1,880	1,668	1,533	1,440	1,399	1,448	1,393
Education and Human Development	1,748	1,670	1,716	1,623	1,557	1,499	1,519
Health Sciences	1,365	1,380	1,455	1,638	1,926	1,792	1,461
Pharmacy	683	746	800	872	964	938	859
Non-Degree	281	462	195	115	100	126	151
<b>Grand Total</b>	<b>8,699</b>	<b>8,248</b>	<b>7,914</b>	<b>7,976</b>	<b>8,249</b>	<b>8,286</b>	<b>7,684</b>



class adj  
 GD GM SR JR SO FR BFN



level  
 Undergraduate Professional Graduate