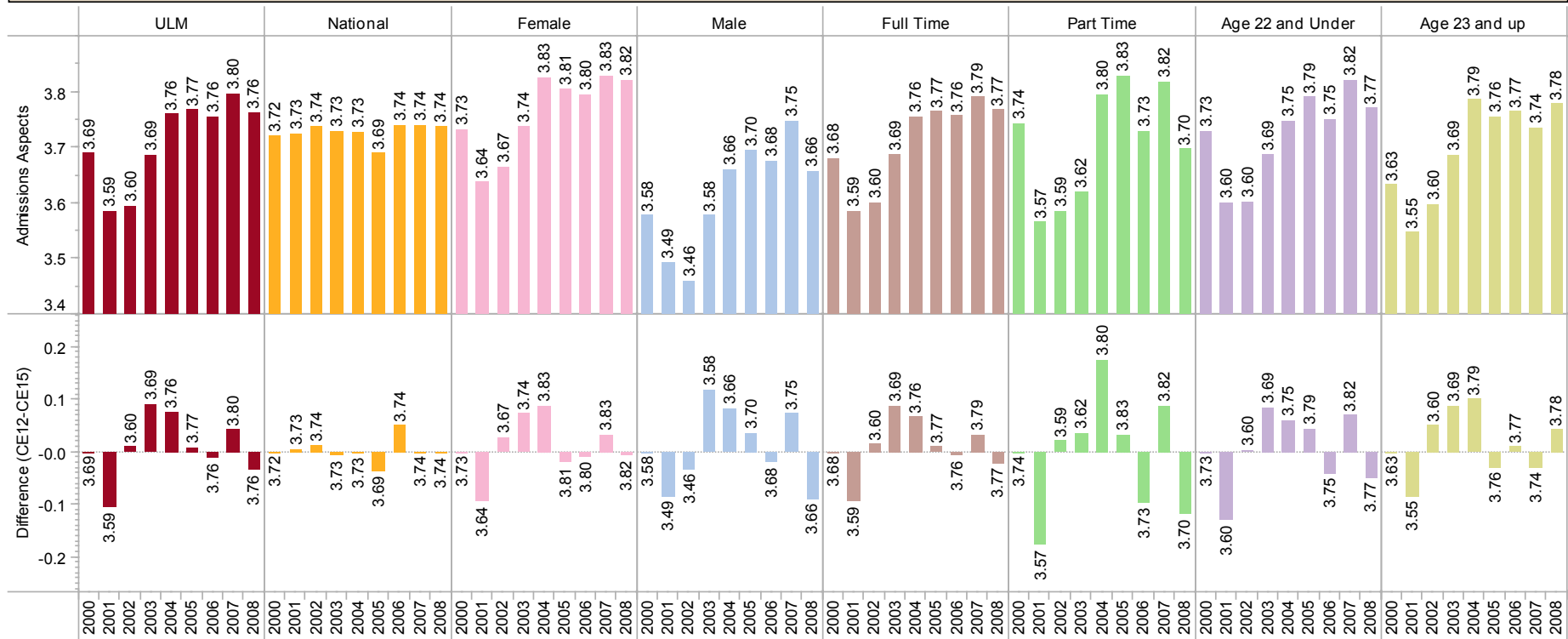


Act Student Opinion Survey Results - Page K.CE.AdA

Average of All Admissions Aspects (CE12 - CE15)



Year		ULM	National	Female	Male	Full Time	Part Time	Age 22 and Under	Age 23 and up
2000	Admissions Aspects	3.69	3.72	3.73	3.58	3.68	3.74	3.73	3.63
	Difference CE12-CE15								
2001	Admissions Aspects	3.59	3.73	3.64	3.49	3.59	3.57	3.60	3.55
	Difference CE12-CE15	-0.11	0.01	-0.09	-0.09	-0.09	-0.18	-0.13	-0.09
2002	Admissions Aspects	3.60	3.74	3.67	3.46	3.60	3.59	3.60	3.60
	Difference CE12-CE15	0.01	0.01	0.03	-0.03	0.02	0.02	0.00	0.05
2003	Admissions Aspects	3.69	3.73	3.74	3.58	3.69	3.62	3.69	3.69
	Difference CE12-CE15	0.09	-0.01	0.07	0.12	0.09	0.04	0.09	0.09
2004	Admissions Aspects	3.76	3.73	3.83	3.66	3.76	3.80	3.75	3.79
	Difference CE12-CE15	0.07	0.00	0.09	0.08	0.07	0.18	0.06	0.10
2005	Admissions Aspects	3.77	3.69	3.81	3.70	3.77	3.83	3.79	3.76
	Difference CE12-CE15	0.01	-0.04	-0.02	0.04	0.01	0.03	0.04	-0.03
2006	Admissions Aspects	3.76	3.74	3.80	3.68	3.76	3.73	3.75	3.77
	Difference CE12-CE15	-0.01	0.05	-0.01	-0.02	-0.01	-0.10	-0.04	0.01
2007	Admissions Aspects	3.80	3.74	3.83	3.75	3.79	3.82	3.82	3.74
	Difference CE12-CE15	0.04	0.00	0.03	0.07	0.03	0.09	0.07	-0.03
2008	Admissions Aspects	3.76	3.74	3.82	3.66	3.77	3.70	3.77	3.78
	Difference CE12-CE15	-0.03	0.00	-0.01	-0.09	-0.02	-0.12	-0.05	0.04