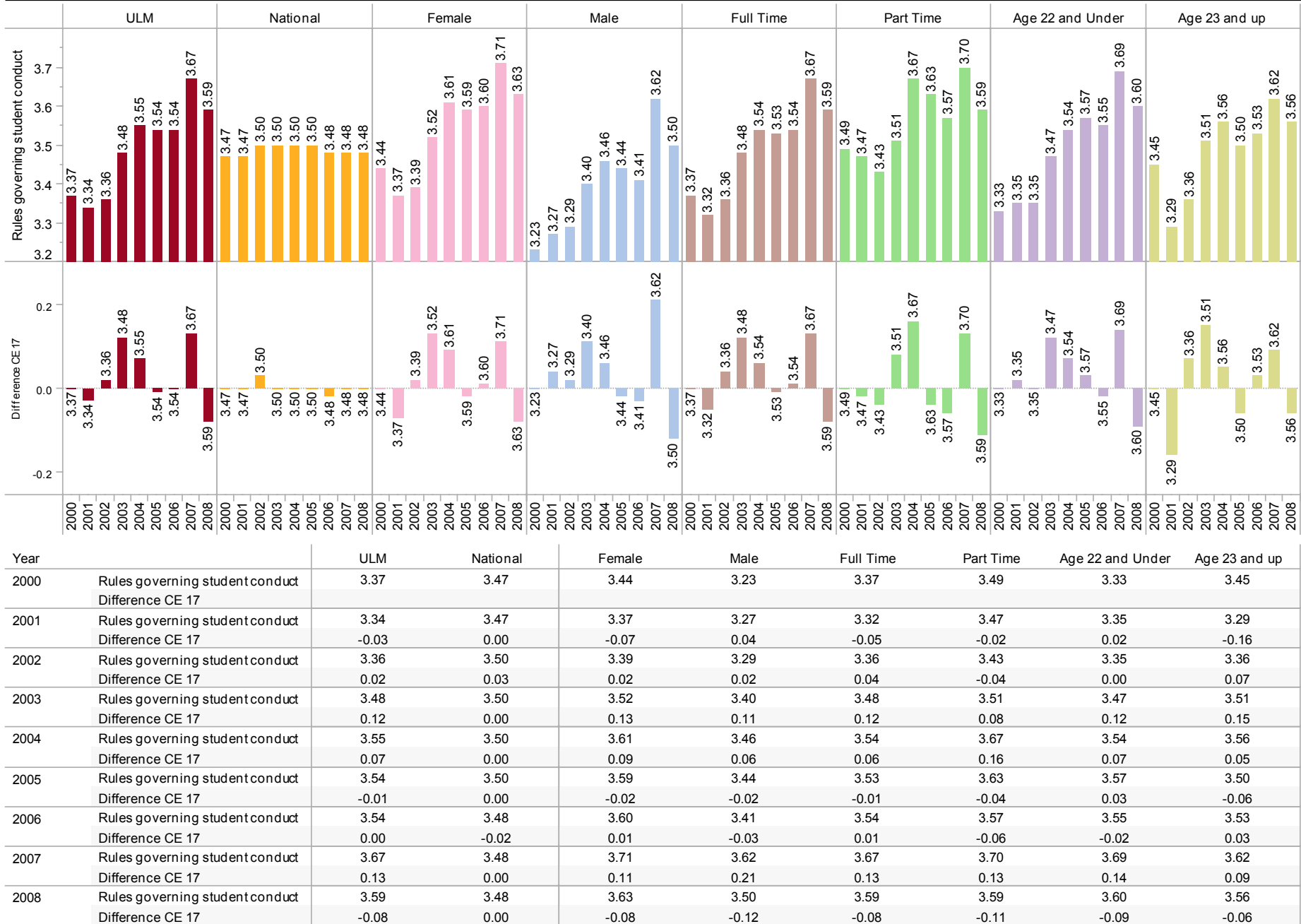


Act Student Opinion Survey Results - Page K.CE17

Rules Governing Student Conduct (CE17) - Rules and Policies Aspects



Year		ULM	National	Female	Male	Full Time	Part Time	Age 22 and Under	Age 23 and up
2000	Rules governing student conduct	3.37	3.47	3.44	3.23	3.37	3.49	3.33	3.45
	Difference CE 17								
2001	Rules governing student conduct	3.34	3.47	3.37	3.27	3.32	3.47	3.35	3.29
	Difference CE 17	-0.03	0.00	-0.07	-0.07	-0.05	-0.02	0.02	-0.16
2002	Rules governing student conduct	3.36	3.50	3.39	3.29	3.36	3.43	3.35	3.36
	Difference CE 17	0.02	0.03	0.02	0.02	0.04	-0.04	0.00	0.07
2003	Rules governing student conduct	3.48	3.50	3.52	3.40	3.48	3.51	3.47	3.51
	Difference CE 17	0.12	0.00	0.13	0.13	0.12	0.08	0.12	0.15
2004	Rules governing student conduct	3.55	3.50	3.61	3.46	3.54	3.67	3.54	3.56
	Difference CE 17	0.07	0.00	0.09	0.06	0.06	0.16	0.07	0.05
2005	Rules governing student conduct	3.54	3.50	3.59	3.44	3.53	3.63	3.57	3.50
	Difference CE 17	-0.01	0.00	-0.02	-0.02	-0.01	-0.04	0.03	-0.06
2006	Rules governing student conduct	3.54	3.48	3.60	3.41	3.54	3.57	3.55	3.53
	Difference CE 17	0.00	-0.02	0.01	-0.03	0.01	-0.06	-0.02	0.03
2007	Rules governing student conduct	3.67	3.48	3.71	3.62	3.67	3.70	3.69	3.62
	Difference CE 17	0.13	0.00	0.11	0.21	0.13	0.13	0.14	0.09
2008	Rules governing student conduct	3.59	3.48	3.63	3.50	3.59	3.59	3.60	3.56
	Difference CE 17	-0.08	0.00	-0.08	-0.12	-0.08	-0.11	-0.09	-0.06