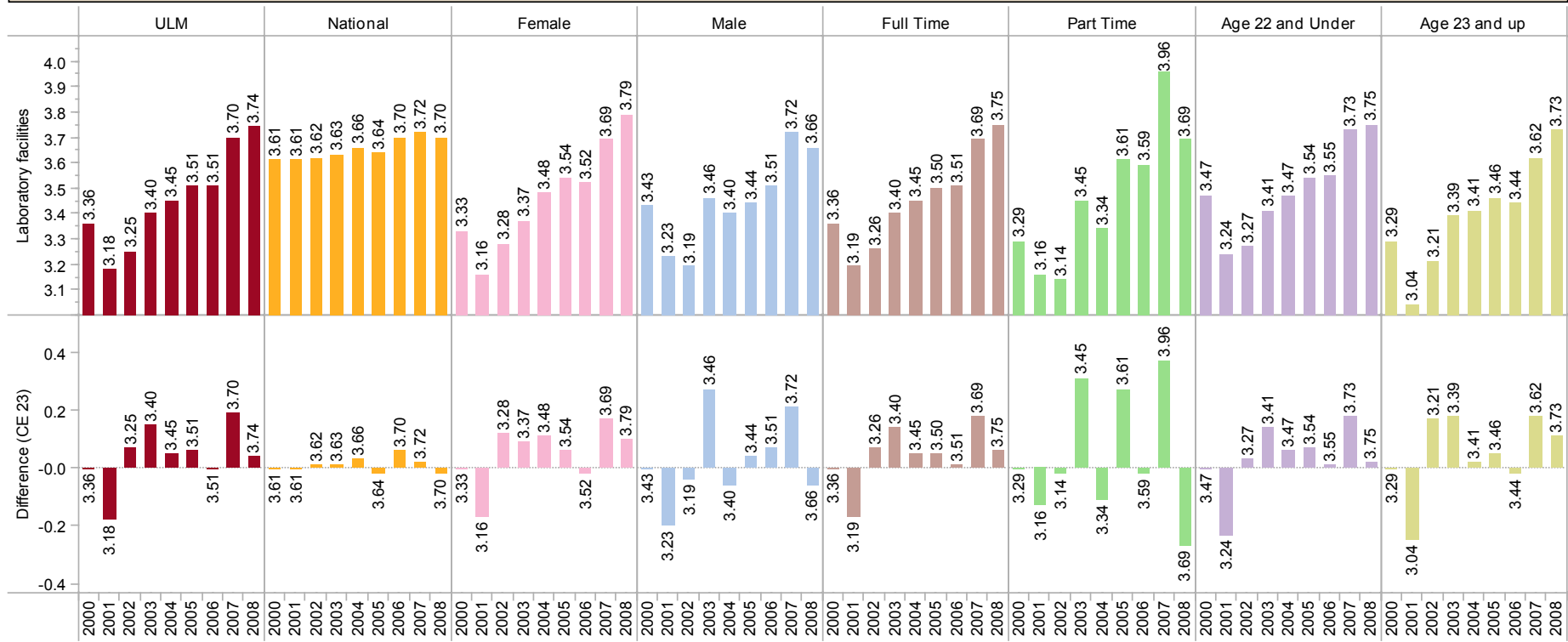


Act Student Opinion Survey Results - Page K.CE23

Laboratory Facilities (CE23) - Facilities Aspects



Year		ULM	National	Female	Male	Full Time	Part Time	Age 22 and Under	Age 23 and up
2000	Laboratory facilities	3.36	3.61	3.33	3.43	3.36	3.29	3.47	3.29
	Difference CE 23								
2001	Laboratory facilities	3.18	3.61	3.16	3.19	3.19	3.16	3.24	3.04
	Difference CE 23	-0.18	0.00	-0.17	-0.20	-0.17	-0.13	-0.23	-0.25
2002	Laboratory facilities	3.25	3.62	3.28	3.19	3.26	3.14	3.27	3.21
	Difference CE 23	0.07	0.01	0.12	-0.04	0.07	-0.02	0.03	0.17
2003	Laboratory facilities	3.40	3.63	3.37	3.40	3.40	3.45	3.41	3.39
	Difference CE 23	0.15	0.01	0.09	0.27	0.14	0.31	0.14	0.18
2004	Laboratory facilities	3.45	3.66	3.48	3.40	3.45	3.34	3.47	3.41
	Difference CE 23	0.05	0.03	0.11	-0.06	0.05	-0.11	0.06	0.02
2005	Laboratory facilities	3.51	3.64	3.54	3.44	3.50	3.61	3.54	3.46
	Difference CE 23	0.06	-0.02	0.06	0.04	0.05	0.27	0.07	0.05
2006	Laboratory facilities	3.51	3.70	3.52	3.51	3.51	3.59	3.55	3.44
	Difference CE 23	0.00	0.06	-0.02	0.07	0.01	-0.02	0.01	-0.02
2007	Laboratory facilities	3.70	3.72	3.69	3.72	3.69	3.96	3.73	3.62
	Difference CE 23	0.19	0.02	0.17	0.21	0.18	0.37	0.18	0.18
2008	Laboratory facilities	3.74	3.70	3.79	3.66	3.75	3.69	3.75	3.73
	Difference CE 23	0.04	-0.02	0.10	-0.06	0.06	-0.27	0.02	0.11